

# **48v solar container communication station solar container lithium battery parallel connection**





## Overview

---

How many batteries can a 48V 100Ah battery connect in parallel?

For instance, connecting two 48V 100Ah batteries in parallel will give you a battery with a capacity of 200Ah, while maintaining the same voltage. It's crucial to connect batteries of the same voltage and energy density in parallel. Connecting Lithium Solar Batteries in Series:

How to connect lithium solar batteries in series?

Connecting Lithium Solar Batteries in Series: To connect lithium solar batteries in series, you simply link the negative pole of one battery to the positive pole of the next battery. This ensures that the same current flows through all the batteries. The total voltage of the series connection is the sum of the individual voltages.

How to connect lithium solar batteries in parallel?

Connecting Lithium Solar Batteries in Parallel: When connecting batteries in parallel, the positive terminals are connected together, and the negative terminals are connected together. The ampere-hour capacity of the individual batteries adds up, while the total voltage remains the same as the individual batteries.

What is the purpose of connecting lithium solar batteries in series?

The main purpose of connecting lithium solar batteries in series is to increase the output voltage. By adding up the voltages of the individual batteries, you can power devices that require higher voltage amounts. For example, connecting two 24V 100Ah batteries in series will result in a combined voltage of 48V while maintaining the same capacity.



## 48v solar container communication station solar container lithium b

---



### [Parallel Connection of Lithium Batteries](#)

Oct 21, 2019 · PARALLEL CONNECTION LITHIUM BATTERIES IS STANDARD WITH LOSSLESS CELL BALANCING TECHNOLOGY This article is designed to give assurance to ...

### [WIRING BATTERIES IN PARALLEL UNDERSTANDING THE](#)

48V lithium battery pack in parallel Safely paralleling 48V batteries requires identical voltage, chemistry, and state of charge (SoC). Mismatched parameters trigger cross-currents, ...



### [48V Battery in Parallel: Cable vs. Bus Bar--Which is Better?](#)

Oct 24, 2025 · Discover why a 48V battery bus bar outperforms cables for parallel connections in solar and lithium systems.



### [Lithium Solar Batteries Series vs Parallel Connection](#)

Apr 27, 2025 · Lithium solar batteries are essential components of solar energy systems, providing reliable energy storage for various applications. Understanding how to connect these ...



### [Lithium Battery Wiring: Ensure Reliable Power](#)

Sep 11, 2025 · Step-by-step lithium battery wiring for safe series, parallel, and series-parallel banks. Build 48V from 12V, size cables and fuses, cut heat, and commission.



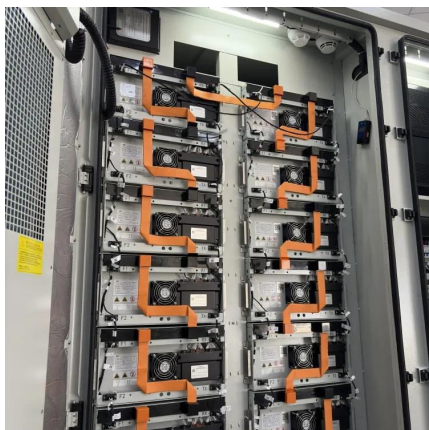
### [Parallel Connection of Batteries in DIY Solar Power](#)

Jul 20, 2024 · Conclusion Parallel connection of batteries in a DIY solar power system is a practical way to expand energy storage capacity. By following key guidelines--matching ...



### [Lithium Battery Wiring: Ensure Reliable Power](#)

Sep 11, 2025 · Step-by-step lithium battery wiring for safe series, parallel, and series-parallel banks. Build 48V from 12V, size cables and fuses, cut ...

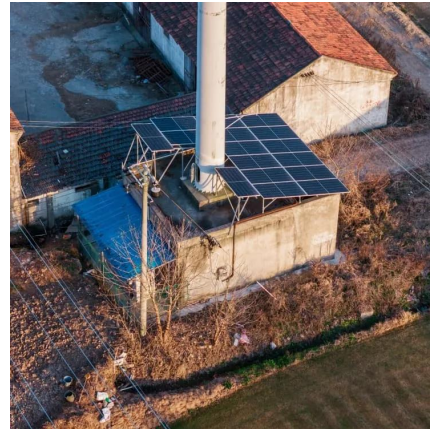






## [How to Connect Multiple 48V Lithium Batteries in Parallel](#)

Sep 29, 2024 · By following these steps, you can successfully connect multiple 48V lithium batteries in parallel, enhancing your energy storage capacity while ensuring safety and ...



## [Lithium Series, Parallel and Series and Parallel](#)

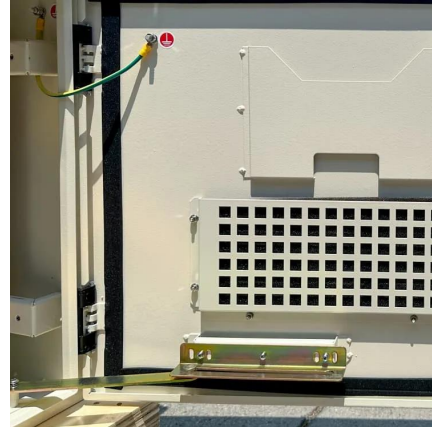
Introduction1. What is a BMS? Why do you need a BMS in your lithium battery?The lithium battery BMS, its design and primary purpose:2. How to connect lithium batteries in series4. How to charge lithium batteries in parallel4.1 Resistance is the enemy4.2 How to charge lithium batteries in parallel - from bad to best designsLithium battery banks using batteries with built-in Battery Management Systems (BMS) are created by connecting two or more batteries together to support a single application. Connecting multiple lithium batteries into a string of batteries allows us to build a battery bank with the potential to operate at an increased voltage, or with increased ca See more on assets.discoverbattery ironws Translate this result

## **Parallel Connection of Batteries in DIY Solar ...**

Jul 20, 2024 · Conclusion Parallel connection of batteries in a DIY solar power system is a practical way to expand energy storage capacity. By ...

## [Lithium Solar Batteries Series vs Parallel ...](#)

Apr 27, 2025 · Lithium solar batteries are essential components of solar energy systems, providing reliable energy storage for various ...



### [How to connect multiple 48V lithium battery ...](#)

Jun 24, 2025 · Conclusion Connecting multiple 48V lithium battery packs is a technical task that requires a good understanding of the connection ...



### [Batteries in Series vs Parallel: Understand The Differences](#)

Nov 18, 2025 · Did you know that wiring two 24V batteries in series gives you 48V, while connecting them in parallel keeps it at 12V but doubles the capacity? Or that parallel ...



### [How to connect multiple 48V lithium battery packs?](#)

Jun 24, 2025 · Conclusion Connecting multiple 48V lithium battery packs is a technical task that requires a good understanding of the connection methods, safety precautions, and the ...





### [Lithium Series, Parallel and Series and Parallel](#)

Mar 23, 2021 · Lithium Series, Parallel and Series and Parallel Connections Introduction Lithium battery banks using batteries with built-in Battery Management Systems (BMS) are created by ...



## Contact Us

---

For technical specifications, project proposals, or partnership inquiries, please visit:  
<https://bukhobuhle.co.za>

### Scan QR Code for More Information



<https://bukhobuhle.co.za>