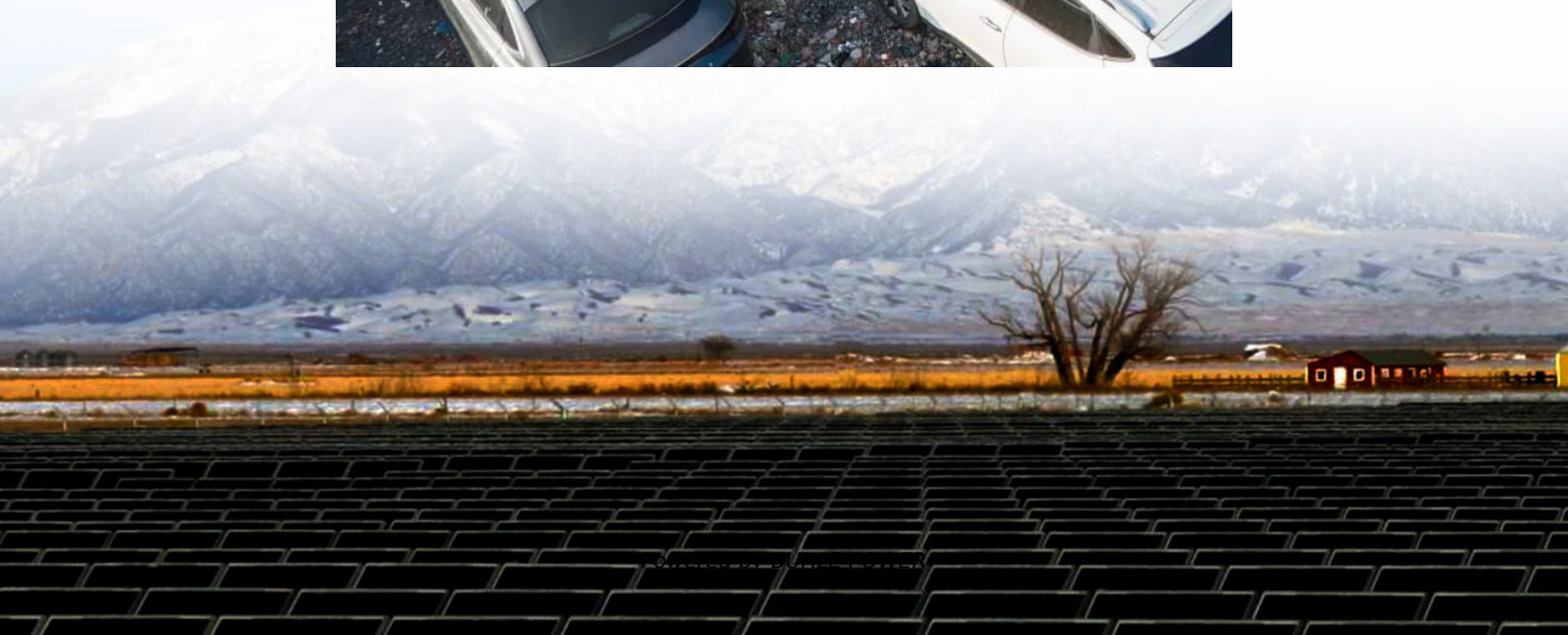


# 80W solar panel charging current





## Overview

---

Can an 80W solar panel charge a 30Ah 12V battery?

An 80 watt solar panel like the Sunpals Solar Panel Kit is sufficient to charge a 12V 30Ah battery in 6 hours. If you have a larger solar panel, the charge time will be faster.

How long does it take to charge an 80W solar panel?

It takes 3 days to charge a 12V 100ah battery with an 80W solar panel, assuming 5 hours of sunlight per day. The charging time will be longer with fewer sun hours.

What battery is best for an 80W solar panel?

An 12V 35Ah battery is the best choice for an 80W solar panel. The solar panel can charge it with 5 hours of sunlight. A 12V 40Ah battery requires 80W to fully recharge, but a solar panel does not produce the power it is rated for. So, an 80W solar panel can generate up to 60W on average. There are ways to overcome this limitation.

How many watts can an 80W solar panel produce?

An 80W solar panel can produce up to 80 watts under optimal conditions, but typically produces 70%-90% of its maximum capacity. Therefore, it may take a few days to charge a 12V 75Ah battery like the Mighty Max 12V using an 80W solar panel.



## 80W solar panel charging current

---



### [How many amps does a 80 watt solar panel produce?](#)

Apr 1, 2023 · In conclusion, an 80-watt solar panel can produce up to 6.67 amps of current under ideal conditions, assuming a voltage of 12 volts. However, the actual amperage may vary ...

### [Understanding Solar Panel Voltage and ...](#)

Decode solar panels specifications to safely connect your panels to power station or charge controller. This quick guide unlocks full solar potential.



### [MPPT charge controller calculator: Find the right solar charge](#)

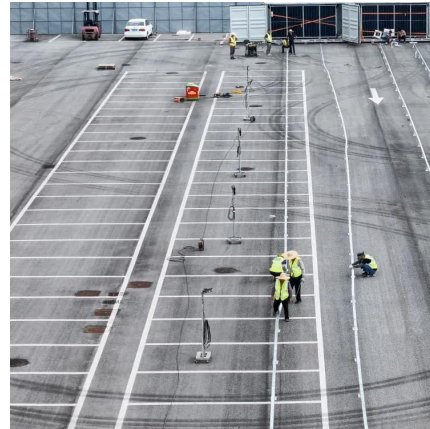
Oct 16, 2024 · This max output current value is calculated by dividing the maximum system wattage (in Watts) by the minimum charging voltage of the battery bank (in Volts). In other ...



### [How does an 80w solar street light charge its battery?](#)

Nov 6, 2025 · The size of the solar panel on an 80w solar street light is carefully calculated to generate enough power to charge the battery and run the light. The panel is typically mounted ...





### [How many amps does an 80w solar panel produce?](#)

Oct 29, 2025 · Conclusion In conclusion, the amperage produced by an 80w solar panel depends on its voltage and several real-world factors. Under ideal conditions, an 80w solar panel with a ...

### [Can an 80W Solar Panel Charge a 100Ah Battery?](#)

Aug 5, 2024 · An 80-watt solar panel can charge a 100Ah battery but will take significantly longer. It may take over 10-15 hours of direct sunlight to achieve a full charge, depending on usage ...



### [Understanding Solar Panel Voltage and Current Output](#)

Decode solar panels specifications to safely connect your panels to power station or charge controller. This quick guide unlocks full solar potential.



## 80W

Aug 11, 2024 · Rigid Solar Panel Developed to meet higher energy demands, the 80W rigid solar panel is suitable for powering higher power consumption devices including 12V TVs and 240V ...

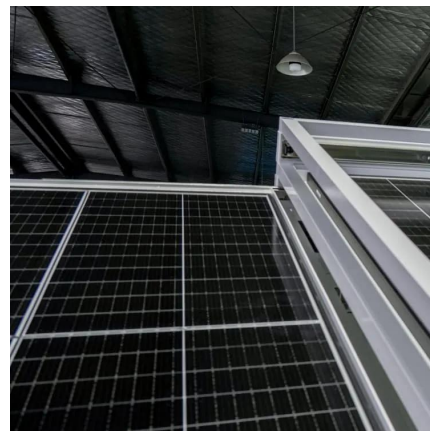


### [What is the current of 48v80w solar panel. NenPower](#)

Aug 29, 2024 · To summarize, a 48V 80W solar panel generates approximately 1.67 amps of current under optimal conditions. Understanding the parameters affecting its performance is ...

### [What is the current of a 80w solar panel](#)

Jul 7, 2022 · To find the average daily current output, use the formula  $\text{Current (A)} = \frac{\text{Power (W)}}{\text{Voltage (V)}}$ . 1. Current at Maximum Power ( $I_{mp}$ )  
The Current at Maximum Power ( $I_{mp}$ ) refers ...



### [Can an 80W Solar Panel Charge a 12V Battery?](#)

How Much Power Does An 80W Solar Panel produce? Output Panel Voltage & Charge Controller What Is The Safe Battery Discharge level? What Can An 80W Solar Panel Power? What Is The Right Battery For An 80W Solar Panel? Conclusion A 12V 35Ah battery is the right one for an 80W solar panel. The solar panel can charge it with 5 hours of sunlight. A 40Ah 12V battery needs 80W to fully recharge, but as explained here, solar panels do not produce the power they are rated for. So an 80W solar panel



can generate up to 60W on average. There are ways to overcome this limitation. You See more on [portablesolarexpert Solar Technology International\[PDF\]](#)

## 80W - Solar Technology

Aug 11, 2024 · Rigid Solar Panel Developed to meet higher energy demands, the 80W rigid solar panel is suitable for powering higher power consumption devices including 12V TVs and 240V ...

[MPPT charge controller calculator: Find the ...](#)

Oct 16, 2024 · This max output current value is calculated by dividing the maximum system wattage (in Watts) by the minimum charging voltage of ...



## Contact Us

---

For technical specifications, project proposals, or partnership inquiries, please visit: <https://bukhobuhle.co.za>

**Scan QR Code for More Information**



<https://bukhobuhle.co.za>