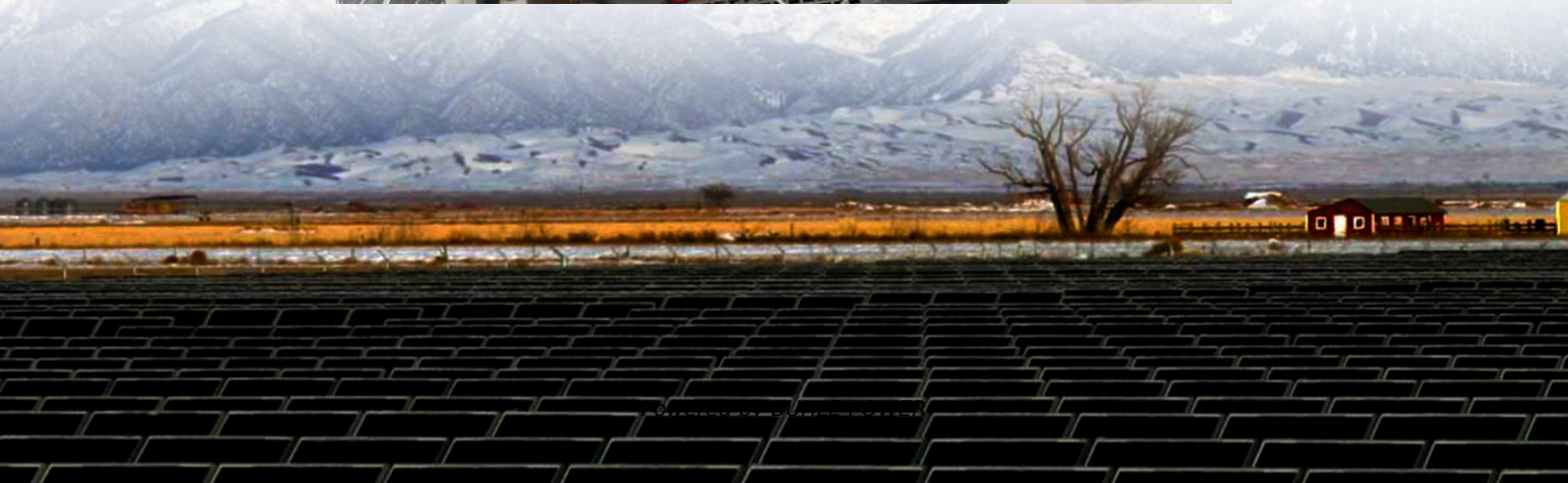


Are the batteries in the energy storage cabinet connected in series or in parallel





Overview

Can a battery be connected in parallel?

Do not connect batteries with different chemistries, rated capacities, nominal voltages, brands, or models in parallel, series, or series-parallel. This can result in potential damage to the batteries and the connected devices, and can also pose safety risks.

What happens when a battery is connected in series?

When connected in series, electron flow moves through the batteries in a continuous chain. The total voltage of the system is the sum of all individual battery voltages, while the amp-hour (Ah) capacity remains unchanged. For example:.

What is a battery pack configuration?

Battery pack configurations determine how much power a battery can provide and for how long. Whether you're choosing a battery pack for an electric vehicle, a robotics project, or an energy storage system, understanding the difference between series and parallel connections can help you make the best decision.

What is the difference between a single battery and a parallel battery?

In parallel wiring, the total amp-hour (Ah) capacity adds up, but the voltage remains the same as a single battery. For example: □ Extended Runtime: Increased capacity allows longer operation times.



Are the batteries in the energy storage cabinet connected in series



[Practical Guide to Using Batteries in Series and Parallel](#)

Jun 14, 2025 · Series boosts voltage, parallel increases capacity; hybrid combines both. Critical to match batteries, use proper charging/BMS, and maintain balance for safety, performance, and ...

[Series, Parallel, and Series-Parallel Connections of Batteries](#)

Learn battery connections: series, parallel, and series-parallel setups. Ensure safety, maximize performance, and extend battery lifecycles.



[Series vs Parallel Battery Wiring: Key ...](#)

Apr 8, 2025 · When using multiple batteries in a project, you have two primary wiring configurations--series and parallel. Each has distinct ...

[Empowering energy storage systems in series and parallel: ...](#)

Oct 31, 2025 · 2. Parallel expansion capacity and continuous power supply capability 3. Technical principle: Connect terminals of the same polarity (positive+positive, negative+negative) in ...



[Understanding Series vs. Parallel Connection of Lead-Acid Energy](#)

4 days ago · One of the most important design considerations is whether to connect the batteries in series or in parallel. Each configuration affects system voltage, capacity, performance, and ...



[Batteries in series and parallel knowledge list](#)

5 days ago · Batteries play a crucial role in powering a wide range of devices and systems, from small electronics to electric vehicles and renewable ...



[Batteries in series and parallel knowledge list](#)

5 days ago · Batteries play a crucial role in powering a wide range of devices and systems, from small electronics to electric vehicles and renewable energy storage. The placement of ...





[Series vs Parallel Battery Wiring: Key Differences, Pros & Cons](#)

Apr 8, 2025 · When using multiple batteries in a project, you have two primary wiring configurations--series and parallel. Each has distinct advantages depending on your needs, ...



[Understanding Battery Pack Configurations: Series vs. Parallel...](#)

Feb 17, 2025 · Battery pack configurations determine how much power a battery can provide and for how long. Whether you're choosing a battery pack for an electric vehicle, a robotics project, ...

[Series vs Parallel Battery Wiring: The Ultimate 2025 Guide](#)

6 days ago · Learn the key differences between series and parallel battery wiring. Discover how to optimize voltage, capacity, and performance for your energy needs in 2025.



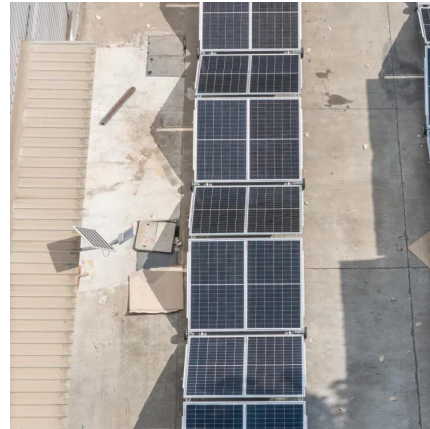
[Ultimate 2026 Guide: Series vs Parallel Battery Wiring for...](#)

3 days ago · Master series & parallel battery connections with our 2026 guide. Learn wiring techniques, capacity planning, charging strategies, and best practices for energy storage ...



Series vs Parallel in Energy Storage , FFD POWER

Oct 28, 2025 · In every energy storage system (ESS), how batteries are connected-- in series or in parallel --plays a critical role in determining system performance, safety, and scalability. ...



Contact Us

For technical specifications, project proposals, or partnership inquiries, please visit:
<https://bukhobuhle.co.za>

Scan QR Code for More Information



<https://bukhobuhle.co.za>