

Area and power of solar panels





Overview

What is a solar panel area calculator?

Definition: This calculator estimates the area of solar panels needed to generate 1 kW of power based on panel efficiency. Purpose: It helps solar installers and homeowners determine how much roof space is required for solar panel installations. 2. How Does the Calculator Work?

The calculator uses the formula: Where:.

How much space does a kilowatt solar panel system need?

The area required for each kilowatt (kW) solar panel system is approximately 5 to 10 square meters, depending on the panel efficiency and wattage. 1. The efficiency of the solar panels influences the space needed significantly, with higher efficiency panels requiring less area per unit of power generated. 2.

How to calculate solar panel area per kW?

Steps to Calculate: Electricity usage = 300 kilowatt-hour Sun hours = 5 hours Percentage of offset = 80% Press Calculate Solar array size Estimate = 0.18 kilowatt After this, let's learn about solar panel area per kW.

How many square meters is a kilowatt solar panel system?

The area required for each kilowatt (kW) solar panel system is approximately 5 to 10 square meters, depending on the panel efficiency and wattage. 1. The effici.



Area and power of solar panels



[How Many Solar Panels Do You Need to Power Your House?](#)

Dec 2, 2025 · Are you curious about how many solar panels power a house? The 2025 guide provides a detailed analysis of energy consumption, panel sizing, and roof factors.

[How many square meters of space is required ...](#)

Oct 10, 2024 · The area required for each kilowatt (kW) solar panel system is approximately 5 to 10 square meters, depending on the panel efficiency ...



[Exploring Solar Panel Area: Key Considerations and Impact](#)

Nov 27, 2025 · Solar panel area refers to the total surface area occupied by solar panels installed to capture sunlight for energy conversion. This area is typically measured in square meters ...

[Total Area Required for Solar Panel ...](#)

Oct 10, 2025 · Calculate the total area needed for your solar panel installation quickly and accurately with our easy-to-use solar panel area ...

...



[What is the relation between area and power of solar panels?](#)

The power per unit area is decided by the power of solar panel itself. For example, if a 1.6x1m solar panel is made of 240W, the average power per square meter is 150W.



[Total Area Required for Solar Panel Installation Calculator](#)

Oct 10, 2025 · Calculate the total area needed for your solar panel installation quickly and accurately with our easy-to-use solar panel area calculator.



[What is the relation between area and power ...](#)

The power per unit area is decided by the power of solar panel itself. For example, if a 1.6x1m solar panel is made of 240W, the average power per ...





[How Many Solar Panels to Power a House Calculator](#)

Definition This calculator helps determine the total area and number of solar panels needed to power a house based on average daily electricity usage, average sunlight hours, solar panel ...

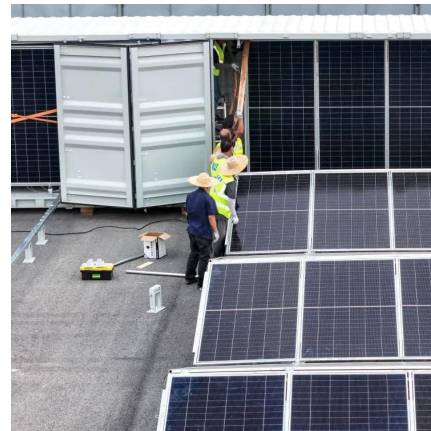


[Solar Power per Square Meter Calculator](#)

Nov 17, 2023 · Solar Power per Square Meter Calculator: It's used to calculate the amount of solar intensity received by the solar panels.

[Exploring Solar Panel Area: Key ...](#)

Nov 27, 2025 · Solar panel area refers to the total surface area occupied by solar panels installed to capture sunlight for energy conversion. This area ...



[How much area is needed for solar panel installation](#)

Mar 18, 2025 · Understanding home solar power system installations Over the past 20 years, millions of Americans have installed rooftop solar panels to harness the sun's energy, ...



[How to calculate the surface area required by solar panels](#)

Aug 28, 2024 · This guide will walk you through the factors influencing solar panel sizing, including energy consumption, panel wattage, roof orientation, and shading. By the end of this ...



[Solar Power per Square Meter Calculator](#)

Nov 17, 2023 · Solar Power per Square Meter Calculator: It's used to calculate the amount of solar intensity received by the solar panels.

[How many square meters of space is required per kw solar ...](#)

Oct 10, 2024 · The area required for each kilowatt (kW) solar panel system is approximately 5 to 10 square meters, depending on the panel efficiency and wattage. 1. The efficiency of the solar ...



[How much area is needed for solar panel ...](#)

Mar 18, 2025 · Understanding home solar power system installations Over the past 20 years, millions of Americans have installed rooftop solar ...



[Solar Panel Area per kW Calculator](#)

What is a Solar Panel Area per kW Calculator?
Definition: This calculator estimates the area of solar panels needed to generate 1 kW of power based on panel efficiency.



Contact Us

For technical specifications, project proposals, or partnership inquiries, please visit:
<https://bukhobuhle.co.za>

Scan QR Code for More Information



<https://bukhobuhle.co.za>