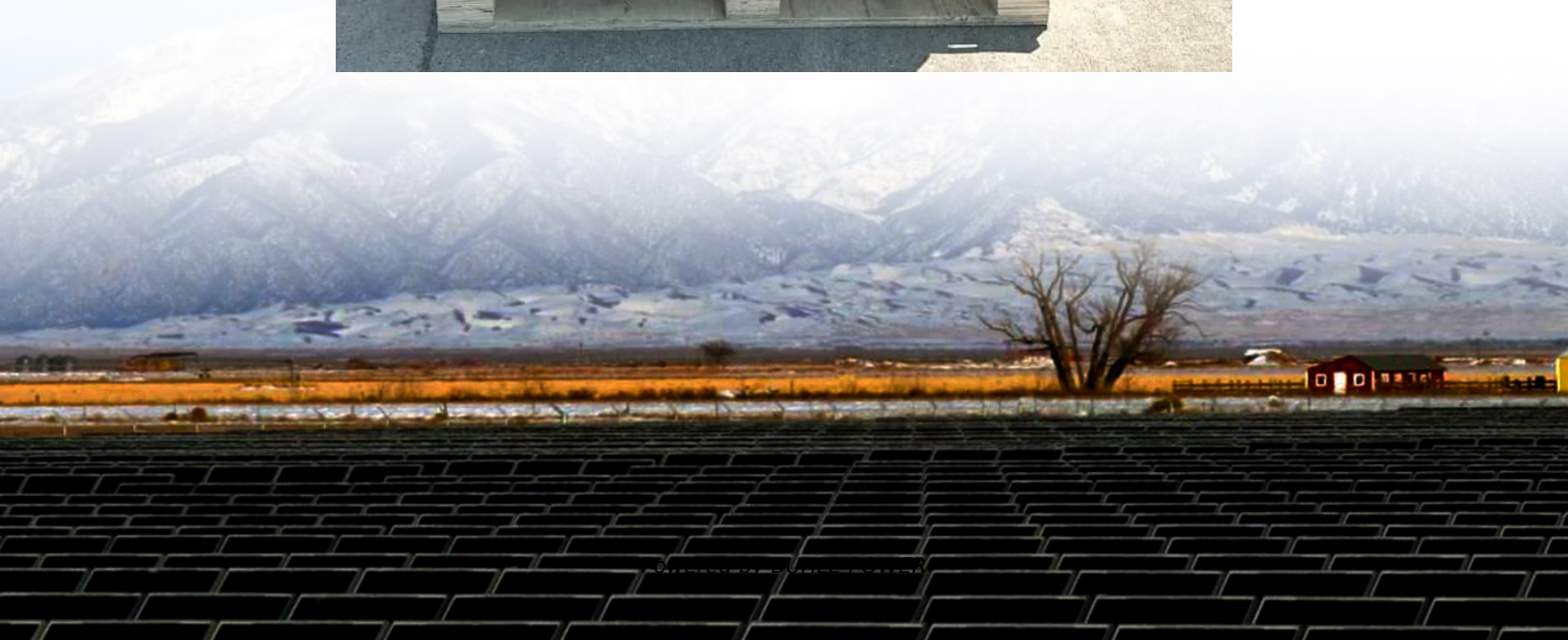


Base station battery output voltage





Overview

Compatibility and Installation Voltage Compatibility: 48V is the standard voltage for telecom base stations, so the battery pack's output voltage must align with base station equipment requirements. Which battery is best for telecom base station backup power?

Among various battery technologies, Lithium Iron Phosphate (LiFePO₄) batteries stand out as the ideal choice for telecom base station backup power due to their high safety, long lifespan, and excellent thermal stability.

How does a battery group work in a base station?

The equipment in base stations is usually supported by the utility grid, where the battery group is installed as the backup power. In case that the utility grid interrupts, the battery discharges to support the communication switching equipment during the period of the power outage.

How many battery groups does a base station have?

The original battery allocation result is largely skewed that over 65 percent base stations are equipped with only one battery group. Our framework considers both the base station situations and battery features, allocating 2 battery groups to most base stations and 3 or 4 battery groups to those with long-time power outages.

What makes a telecom battery pack compatible with a base station?

Compatibility and Installation Voltage Compatibility: 48V is the standard voltage for telecom base stations, so the battery pack's output voltage must align with base station equipment requirements. Modular Design: A modular structure simplifies installation, maintenance, and scalability.



Base station battery output voltage



[Base station battery output current direction](#)

Telecom Base Station Battery Uninterrupted Power Supply: Our batteries provide immediate backup power during grid outages, ensuring continuous operation of base stations and ...

[Communications System Power Supply Designs](#)

Apr 1, 2023 · In a 3G Base Station application, two converters are used to provide the +27V distribution bus voltage during normal conditions and power outages. A high-voltage converter ...



[Telecom Base Station Power Supply](#)

The EP-48V100Ah battery pack is a high-performance backup power solution designed for telecom base stations. With a 51.2V nominal voltage and 5.12kWh capacity, it ensures stable ...

[Does the base station power box have batteries](#)

Nov 22, 2025 · Compatibility and Installation
Voltage Compatibility: 48V is the standard voltage for telecom base stations, so the battery pack's output voltage must align with base station ...



[Communication base station battery equipment installer...](#)

4 days ago · Compatibility and Installation
Voltage Compatibility: 48V is the standard voltage for telecom base stations, so the battery pack's output voltage must align with base station ...



[How to start a communication base station battery ...](#)

Nov 12, 2025 · Compatibility and Installation
Voltage Compatibility: 48V is the standard voltage for telecom base stations, so the battery pack's output voltage must align with base station ...



[HJ 5G Base Station Hybrid Power Supply with ...](#)

Output Voltage (V):110V-240V Output
Frequency:60Hz/50Hz Work Time (h):24 Hours
Product name:Base station energy storage
Type:5G Base Station Usage:5G Base Station ...





[Rack Lithium Battery Solutions for Telecom Base Stations](#)

Sep 19, 2025 · How Do Rack Lithium Battery Solutions Improve Telecom Base Station Reliability? Rack lithium battery solutions enhance reliability by delivering stable voltage output, essential ...



[48V Communication Base Station Battery , Long-Lasting ...](#)

Our 48V communication base station batteries are built using advanced lithium technology, which significantly enhances their lifespan compared to traditional battery systems. This longevity ...

[Battery specifications for communication base stations](#)

Oct 20, 2025 · Compatibility and Installation
Voltage Compatibility: 48V is the standard voltage for telecom base stations, so the battery pack's output voltage must align with base station ...



[Telecom Base Station Backup Power Solution: ...](#)

Jun 5, 2025 · Discover the 48V 100Ah LiFePO4 battery pack for telecom base stations: safe, long-lasting, and eco-friendly. Optimize reliability with ...



[Telecom Base Station Backup Power Solution: Design Guide ...](#)

Jun 5, 2025 · Discover the 48V 100Ah LiFePO4 battery pack for telecom base stations: safe, long-lasting, and eco-friendly. Optimize reliability with our design guide.

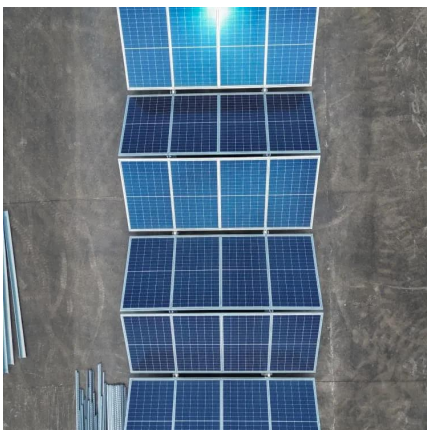


[Role of Base Station Batteries in Voltage Stabilization](#)

Oct 31, 2025 · The TP-4830T 48V 30Ah Base Station Battery, for instance, exemplifies the advanced technology used in modern base station batteries, offering high capacity, long cycle ...

[Base Station battery Voltage , Download ...](#)

Download scientific diagram , Base Station battery Voltage from publication: Glacsweb: A Sensor Network for Hostile Environments , A sensor network ...



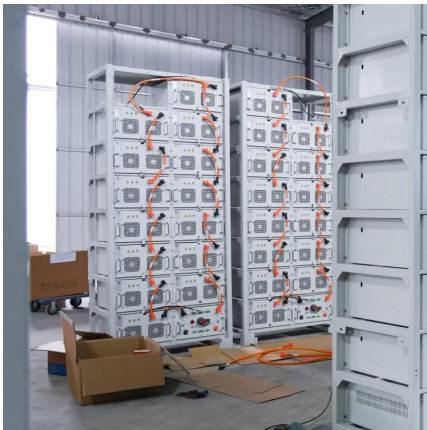
[Battery output voltage range for communication base ...](#)

Nov 27, 2025 · This translates to lower replacement frequency and maintenance costs. Wide Temperature Range LiFePO4 batteries operate reliably in temperatures ranging from -20°C to ...



[How to Determine the Right Battery Capacity for Telecom Base Stations](#)

Mar 10, 2025 · Choosing the right battery capacity is essential to ensure sufficient backup power during outages. Key Factors: Power Consumption: Determine the base station's load (in ...

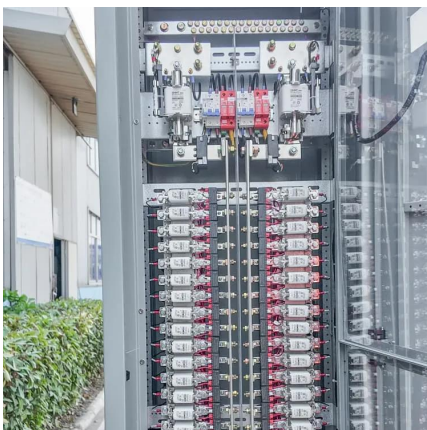


[Voltage Settings for BLVD & LLVD in Batteries](#)

The primary and secondary power-off settings in base station DC power supply systems are mainly distinguished based on differences in battery discharge voltage. When the utility power ...

[HJ Advanced Lithium Ion 4G Base Station Battery System...](#)

Feature highlights: The HJ Advanced Lithium Ion 4G Base Station Battery System offers robust energy storage (10KWh to 40KWh) with multiple green power inputs including photovoltaic and ...



[Backup Battery Analysis and Allocation against Power...](#)

Jan 17, 2022 · Battery groups are installed as backup power in most of the base stations in case of power outages due to severe weathers or human-driven accidents, particularly in remote ...



[How to Determine the Right Battery Capacity ...](#)

Mar 10, 2025 · Choosing the right battery capacity is essential to ensure sufficient backup power during outages. Key Factors: Power ...



Contact Us

For technical specifications, project proposals, or partnership inquiries, please visit:
<https://bukhobuhle.co.za>

Scan QR Code for More Information



<https://bukhobuhle.co.za>