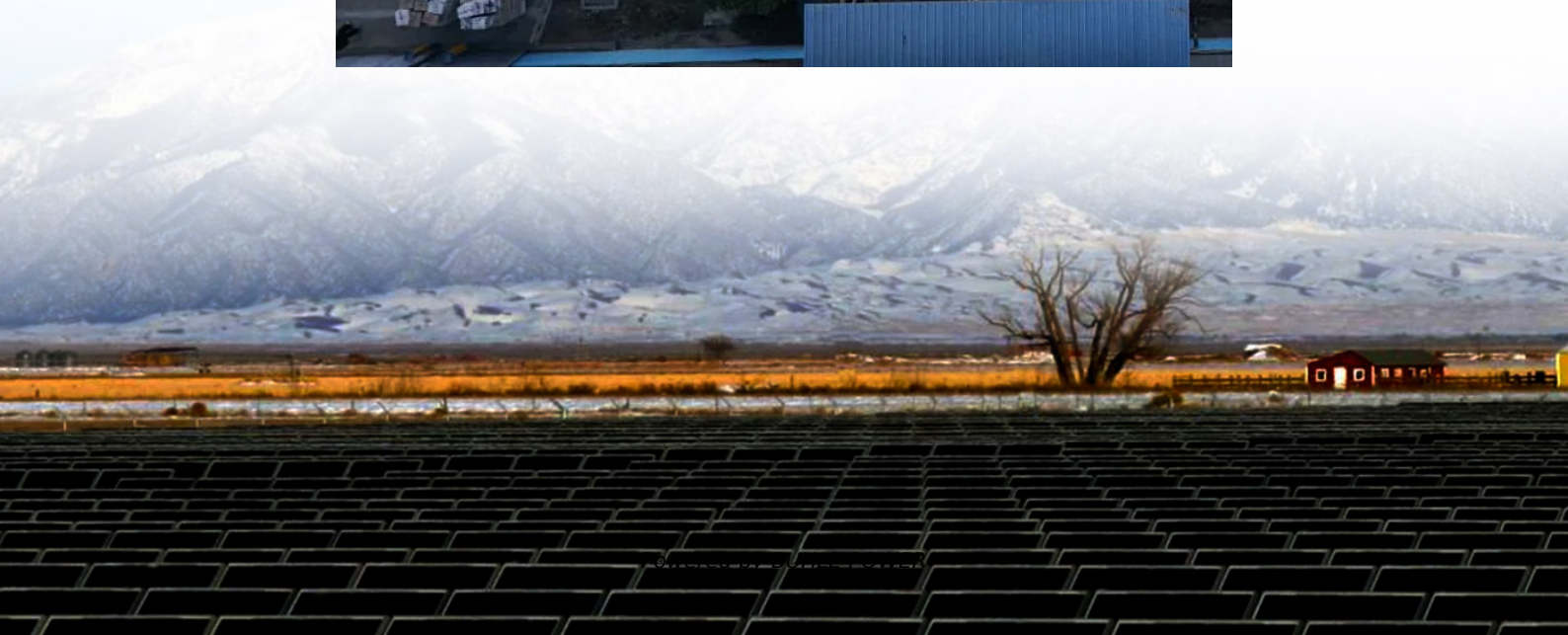


Battery bank connected to high voltage inverter





Overview

How do you connect a battery to an inverter?

Connect the inverter's positive and negative terminals to the battery, add a fuse on the positive line, and double-check polarity. Match inverter and battery voltage (e.g., 12V to 12V). Always use a fuse or circuit breaker on the positive line. Use thick cables (4 AWG or lower) to prevent voltage drop.

Do inverters and batteries need to match?

The inverter and batteries must match in terms of voltage, capacity, and power output. If you are using a 12V battery, then the input voltage of the inverter must match the battery voltage. If the specifications of the battery and the inverter do not match, the system will not operate stably and may even damage the equipment.

Why are battery and inverter connections important?

Proper battery and inverter connections can prevent equipment damage due to wiring errors or polarity problems. For example, incorrectly connecting the positive and negative terminals of the batteries may cause the inverter to fail to work properly or even burn out the inverter's circuit system.

Why is my battery bank too high?

Too high a voltage in a battery bank is either due to an improper setting in the charge controller or in the inverter's charger. Depending on your battery type, it will be necessary to have digital voltmeter available to measure voltage at the charge controller, the battery and the inverter terminals.



Battery bank connected to high voltage inverter



[Connecting a Battery Bank to Your Hybrid Inverter](#)

Dec 3, 2024 · A series connection increases the voltage of your battery bank, which may be necessary if you have an inverter that operates at a higher voltage. A parallel connection ...

[How To Avoid Spark On When Connecting ...](#)

Dec 24, 2023 · Connecting an inverter to a battery bank is a crucial step in setting up a solar power or backup power system. However, many DIY ...



[Battery Voltage very high when on Inverter with no Grid AC](#)

May 19, 2021 · Too high a voltage in a battery bank is either due to an improper setting in the charge controller or in the inverter's charger. Depending on your battery type, it will be ...



[Inverters that support high voltage \(500v\) ...](#)

Jun 17, 2024 · Hi guys, Second post. I'm in Japan (100v 60hz) and am researching the best inverter brand and model to buy for a DIY solar ...

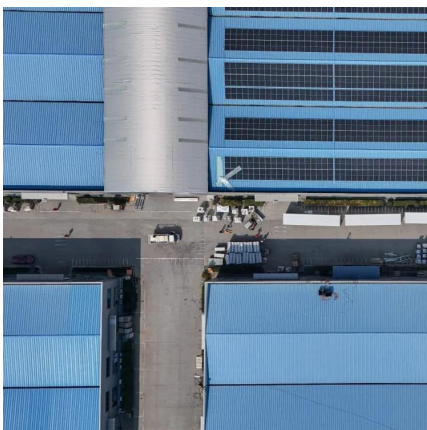


3. Battery bank wiring

Aug 30, 2024 · 3.1. The battery bank Batteries are interconnected to increase the battery voltage or to increase the battery capacity or both. Multiple ...

Battery connection for inverter

Dec 16, 2024 · Confirm battery voltage before physically connecting to inverter to avoid situations where the batteries voltage is too high or low ...



Connecting a Battery Bank to Your Hybrid ...

Dec 3, 2024 · A series connection increases the voltage of your battery bank, which may be necessary if you have an inverter that operates at a higher ...



[How to Safely Connect a Battery to an Inverter: A Step-by ...](#)

Apr 13, 2025 · Learn how to safely connect your batteries to your inverter with our guide. Avoid common wiring mistakes to optimize performance and extend system life.

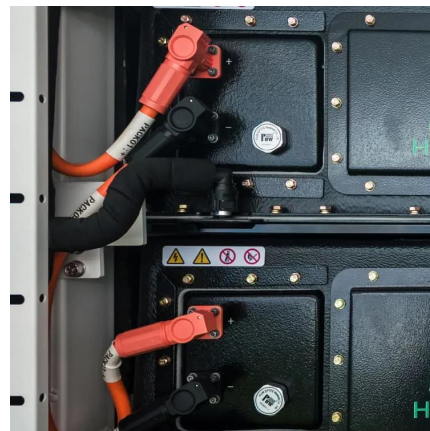


[Inverters that support high voltage \(500v\) storage batteries](#)

Jun 17, 2024 · Hi guys, Second post. I'm in Japan (100v 60hz) and am researching the best inverter brand and model to buy for a DIY solar build. I intend to connect a Leaf 24kWh battery ...

Advanced Considerations for Connecting Lithium Batteries and Inverters

Oct 8, 2024 · Ensure the inverter's input voltage range is compatible with the total voltage of the battery bank. 2. Balancing Loads When using a high-capacity system, it's important to balance ...



[How To Avoid Spark On When Connecting Inverter To Batteries?](#)

Dec 24, 2023 · Connecting an inverter to a battery bank is a crucial step in setting up a solar power or backup power system. However, many DIY enthusiasts encounter a startling issue - ...



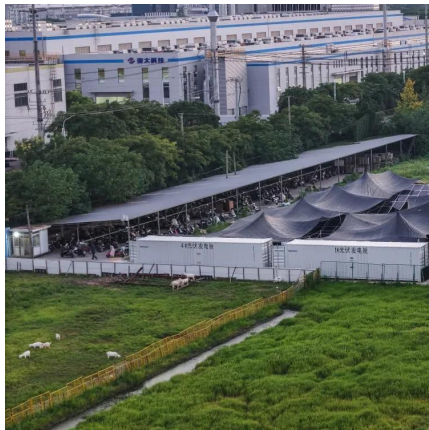
[How to Wire Inverter to Battery - No Sparks, Just Power](#)

Jul 18, 2025 · How to wire an inverter to a battery? Connect the inverter's positive and negative terminals to the battery, add a fuse on the positive line, and double-check polarity. Key ...



[Battery connection for inverter](#)

Dec 16, 2024 · Confirm battery voltage before physically connecting to inverter to avoid situations where the batteries voltage is too high or low for the inverter. Use appropriate cables and ...



[How to Wire Inverter to Battery - No Sparks, ...](#)

Jul 18, 2025 · How to wire an inverter to a battery? Connect the inverter's positive and negative terminals to the battery, add a fuse on the positive ...



[How to Install a Second Battery for an Inverter](#)

Dec 5, 2025 · Comprehensive guide to installing a dedicated auxiliary battery bank for reliable inverter power, covering sizing, charging, and safe system integration.





3. Battery bank wiring

Aug 30, 2024 · 3.1. The battery bank Batteries are interconnected to increase the battery voltage or to increase the battery capacity or both. Multiple interconnected batteries are called a ...



Contact Us

For technical specifications, project proposals, or partnership inquiries, please visit:
<https://bukhobuhle.co.za>

Scan QR Code for More Information



<https://bukhobuhle.co.za>