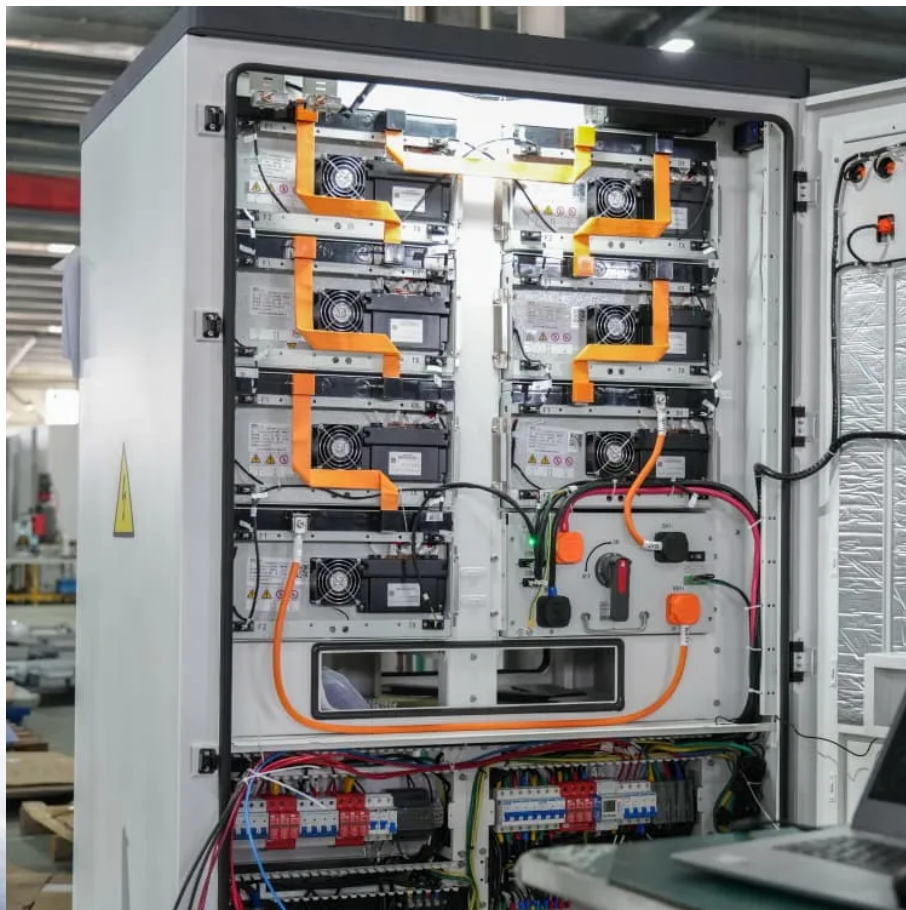


Calculation of wind-solar complementary load of solar container communication station





Overview

What is the maximum integration capacity of wind and solar power?

At this ratio, the maximum wind-solar integration capacity reaches 3938.63 MW, with a curtailment rate of wind and solar power kept below 3 % and a loss of load probability maintained at 0 %. Furthermore, under varying loss of load probabilities, the total integration capacity of wind and solar power increases significantly.

What is the maximum wind and solar installed capacity?

The results indicate that a wind-solar ratio of around 1.25:1, with wind power installed capacity of 2350 MW and photovoltaic installed capacity of 1898 MW, results in maximum wind and solar installed capacity. Furthermore, installed capacity increases with increasing wind and solar curtailment rates and loss-of-load probabilities.

What is the complementary coefficient between wind power stations and photovoltaic stations?

Utilizing the clustering outcomes, we computed the complementary coefficient R between the wind speed of wind power stations and the radiation of photovoltaic stations, resulting in the following complementary coefficient matrix (Fig. 17.).

What is a capacity optimization model for a wind-solar-hydro-storage multi-energy complementary system?

This paper develops a capacity optimization model for a wind-solar-hydro-storage multi-energy complementary system. The objectives are to improve net system income, reduce wind and solar curtailment, and mitigate intraday fluctuations.



Calculation of wind-solar complementary load of solar container cor



[A copula-based wind-solar complementarity coefficient: ...](#)

Mar 1, 2025 · A measure of wind-solar complementarity coefficient R is proposed in this paper. Utilizes the copula function to settle the Spearman and Kendall correlation coefficients ...

[Study of wind-solar complementary power system in ...](#)

The wind-solar complementary power generation system in Zhongshan Station of Antarctic mainly by the photovoltaic power generation subsystem, wind power generation subsystem, wind-solar



[Research on Optimal Configuration of Wind-Solar-Storage Complementary](#)

Dec 29, 2024 · To address challenges such as consumption difficulties, renewable energy curtailment, and high carbon emissions associated with large-scale wind and solar power ...



[Optimal Configuration and Empirical Analysis of a Wind-Solar ...](#)

Jul 29, 2025 · Currently, the optimization of wind-solar-hydro-storage multi-energy complementary systems still face multiple engineering and modeling challenges. On one hand, ...



[Research on Wind-Solar Complementarity Rate Analysis and...](#)

Mar 31, 2025 · This paper presents a new capacity planning method that utilizes the complementary characteristics of wind and solar power output. It addresses the limitations of ...



[Optimal Design of Wind-Solar complementary power...](#)

Dec 15, 2024 · The results indicate that a wind-solar ratio of around 1.25:1, with wind power installed capacity of 2350 MW and photovoltaic installed capacity of 1898 MW, results in ...



[Communication base station wind and solar ...](#)

Oct 24, 2025 · The invention relates to a communication base station stand-by power supply system based on an activation-type cell and a wind-solar complementary power supply system.





[Design of Off-Grid Wind-Solar Complementary Power ...](#)

Feb 29, 2024 · Currently, wind-solar complementary power generation technology has penetrated into People's Daily life and become an indispensable part [3]. This paper takes a 1500 m high ...



[Matching Optimization of Wind-Solar Complementary Power ...](#)

Sep 23, 2024 · The intermittency, randomness and volatility of wind power and photovoltaic power generation bring trouble to power system planning. The capacity configuration of integrated ...



[Research on Wind-Solar Complementarity Rate Analysis and ...](#)

Mar 31, 2025 · Abstract This paper presents a new capacity planning method that utilizes the complementary characteristics of wind and solar power output. It addresses the limitations of ...



Contact Us

For technical specifications, project proposals, or partnership inquiries, please visit:
<https://bukhobuhle.co.za>



Scan QR Code for More Information



<https://bukhobuhle.co.za>