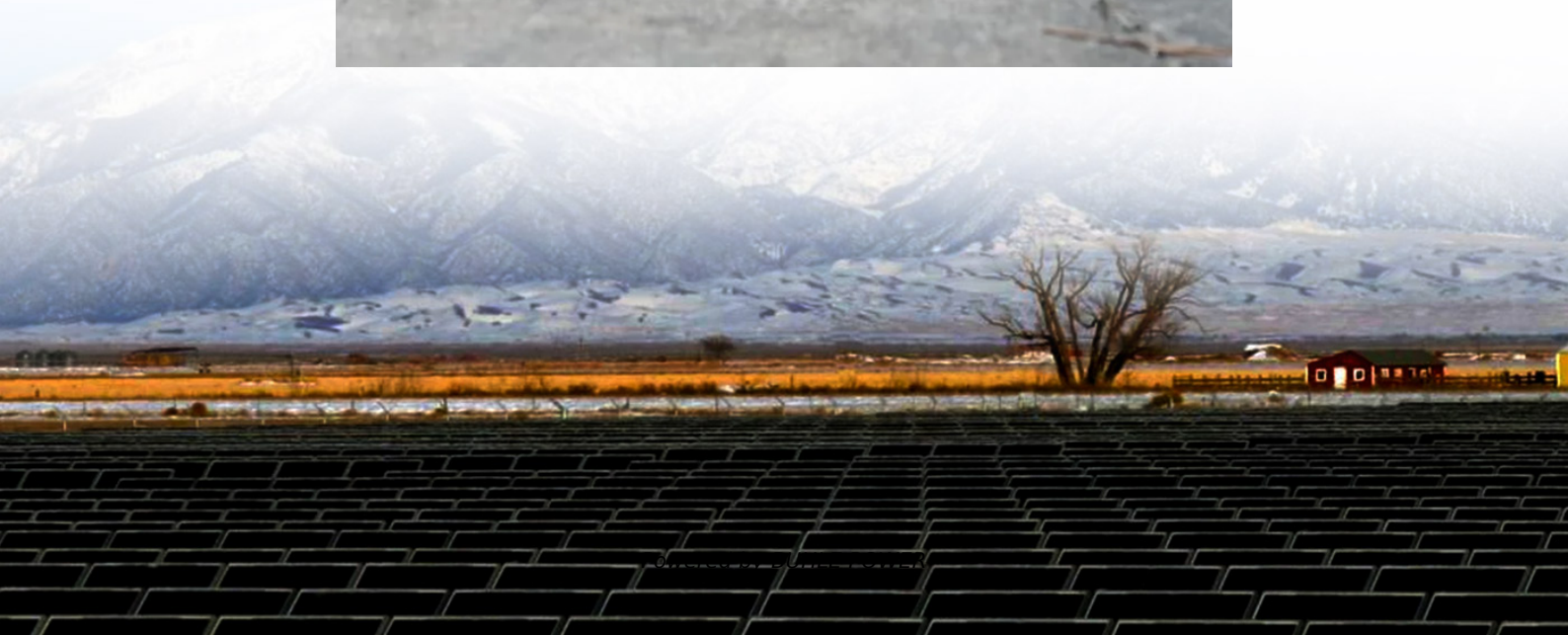


# Can a 12V 7A battery drive an inverter





## Overview

---

How long will a 12V battery last with an inverter?

As a simple rule, to calculate how long a 12v deep-cycle battery will last with an inverter multiply battery amp-hours (Ah) by 12 to find watt-hours, and divide by the load watts to find run time hours. Finally, multiply run time hours by 95% to account for inverter losses. Introduction to Solar Power Battery Inverters – What Do Inverters Do?

.

Can a 12V battery be used as an inverter?

If you are using a 12V battery, then the input voltage of the inverter must match the battery voltage. If the specifications of the battery and the inverter do not match, the system will not operate stably and may even damage the equipment. In addition, choose the right inverter power and battery capacity for your home or commercial needs.

Do inverters and batteries need to match?

The inverter and batteries must match in terms of voltage, capacity, and power output. If you are using a 12V battery, then the input voltage of the inverter must match the battery voltage. If the specifications of the battery and the inverter do not match, the system will not operate stably and may even damage the equipment.

Can a small power inverter be plugged into a 12 volt outlet?

Some small power inverters are equipped with DC power cords with plugs that can be plugged into a 12 volt vehicle outlet. Some have a cord set that have battery clips identified as Positive (Red color) and Negative (Black color). Some small inverters have two cords supplied; one with a plug and one with battery clips. 12 Volt Outlets



## Can a 12V 7A battery drive an inverter

---



### [Can I Use a 12V 7AH Battery with an Inverter?](#)

Dec 26, 2023 · Yes, you can use a 12V 7Ah battery with an inverter, provided that the inverter is compatible with a 12V input. This configuration is suitable for low-power applications, such as ...

### [How Long Will A 12v Battery Last With An ...](#)

Jan 11, 2025 · As a simple rule, to calculate how long a 12v deep-cycle battery will last with an inverter multiply battery amp-hours (Ah) by 12 to ...



### [How to Connect a Large or Small Inverter to a ...](#)

Nov 28, 2017 · by: Justin Gray This blog answers questions about which inverters can be powered by 12V DC accessory outlets (cigarette lighter ...



## batteries

Apr 23, 2019 · That the battery can support this short-term spike in current without damage while the inverter starts up. That the terminal voltage will not fall below the under-voltage cutout for ...

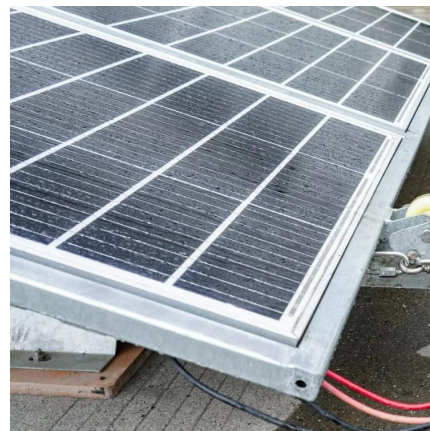


### [How to Safely Connect a Battery to an Inverter: A Step-by-...](#)

Apr 13, 2025 · Learn how to safely connect your batteries to your inverter with our guide. Avoid common wiring mistakes to optimize performance and extend system life.

### [Frequently Asked Questions about Inverters](#)

Frequently Asked Questions about Inverters How much battery capacity do I need with an inverter? As a rule of thumb, the minimum required battery capacity for a 12-volt system is ...



### [Can I Attach My Small Inverter Directly to the Battery?](#)

Jul 14, 2025 · Yes, you can attach a small inverter directly to a battery, but doing it safely requires understanding voltage compatibility, wire sizing, and overload risks. Many DIYers assume it's ...





## [How to Wire Inverter to Battery - No Sparks. Just Power](#)

Jul 18, 2025 · How to wire an inverter to a battery? Connect the inverter's positive and negative terminals to the battery, add a fuse on the positive line, and double-check polarity. Key ...

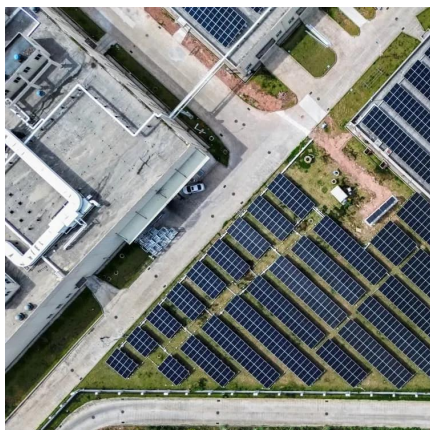


## [What size inverter can you run off a car battery?](#)

Aug 11, 2025 · A typical 12-volt car battery can safely support an inverter ranging from about 150 watts up to 600 watts for regular use without harming the battery. While it is technically ...

## [How to Connect a Large or Small Inverter to a Battery](#)

Nov 28, 2017 · by: Justin Gray This blog answers questions about which inverters can be powered by 12V DC accessory outlets (cigarette lighter sockets) and which require wiring ...



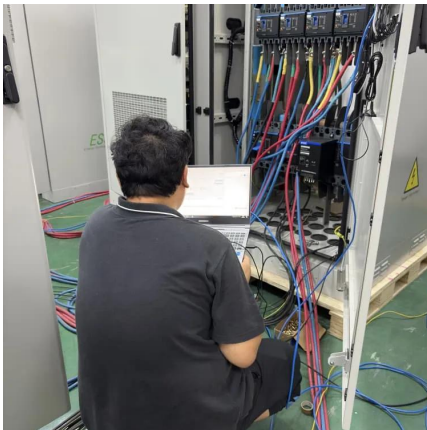
## [How Long Will A 12v Battery Last With An Inverter? Calculator](#)

Jan 11, 2025 · As a simple rule, to calculate how long a 12v deep-cycle battery will last with an inverter multiply battery amp-hours (Ah) by 12 to find watt-hours, and divide by the load watts ...



### [How Long Will a 12V Battery Last When Paired with an Inverter](#)

Feb 13, 2025 · The runtime of a 12V battery paired with an inverter depends on multiple factors, including battery capacity, load, and inverter efficiency. By understanding these variables and ...



### [How to Wire Inverter to Battery - No Sparks, ...](#)

Jul 18, 2025 · How to wire an inverter to a battery? Connect the inverter's positive and negative terminals to the battery, add a fuse on the positive ...

### [How to Safely Connect a Battery to an ...](#)

Apr 13, 2025 · Learn how to safely connect your batteries to your inverter with our guide. Avoid common wiring mistakes to optimize performance ...



## Contact Us

---

For technical specifications, project proposals, or partnership inquiries, please visit:  
<https://bukhobuhle.co.za>



## Scan QR Code for More Information



<https://bukhobuhle.co.za>