

Can solar container lithium battery packs be used in parallel





Overview

Should you connect lithium solar batteries in series or parallel?

In a parallel connection, the capacity increases while maintaining the same voltage, ideal for longer run times. When setting up lithium solar batteries, understanding how to connect them in series or parallel is crucial for maximizing efficiency and performance. Below, we delve into the specifics of each configuration.

How to connect lithium solar batteries in series?

Connecting Lithium Solar Batteries in Series: To connect lithium solar batteries in series, you simply link the negative pole of one battery to the positive pole of the next battery. This ensures that the same current flows through all the batteries. The total voltage of the series connection is the sum of the individual voltages.

Can you connect two lithium batteries in parallel?

Yes, you can connect two lithium batteries in parallel to increase capacity while maintaining voltage. Ensure both batteries have identical voltage, capacity, and state of charge to prevent imbalances. Use proper wiring, fuses, and a battery management system (BMS) to mitigate risks like overheating or uneven current flow.

What is the purpose of connecting lithium solar batteries in series?

The main purpose of connecting lithium solar batteries in series is to increase the output voltage. By adding up the voltages of the individual batteries, you can power devices that require higher voltage amounts. For example, connecting two 24V 100Ah batteries in series will result in a combined voltage of 48V while maintaining the same capacity.



Can solar container lithium battery packs be used in parallel



[How to Balance Lithium Batteries with Parallel ...](#)

Sep 1, 2023 · A parallel BMS regulates the current flow between 2 or multiple batteries connected in parallel, learn how it works and how to connect it.

[Connecting Lithium Solar Batteries In Series ...](#)

Aug 11, 2024 · Wiring lithium solar batteries in series and in parallel enhances energy storage, consistent with the continent's vision for green ...



[Can I parallel multiple Lithium Battery Packs?](#)

May 27, 2025 · If you're considering paralleling multiple lithium battery packs for your energy storage needs, I encourage you to reach out to our team. ...



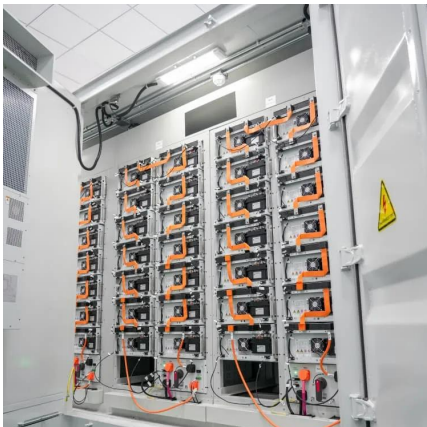
[Can You Safely Connect Two Lithium Batteries in Parallel?](#)

Yes, you can connect two lithium batteries in parallel to increase capacity while maintaining voltage. Ensure both batteries have identical voltage, capacity, and state of charge to prevent ...



[Lithium Solar Batteries Series vs Parallel ...](#)

Apr 27, 2025 · Lithium solar batteries are essential components of solar energy systems, providing reliable energy storage for various ...



[Can I parallel multiple Lithium Battery Packs?](#)

May 27, 2025 · If you're considering paralleling multiple lithium battery packs for your energy storage needs, I encourage you to reach out to our team. We have extensive experience in ...



[Lithium Solar Batteries Series vs Parallel Connection](#)

Apr 27, 2025 · Lithium solar batteries are essential components of solar energy systems, providing reliable energy storage for various applications. Understanding how to connect these ...





[How to Connect Solar Batteries in Parallel for Maximum ...](#)

Oct 26, 2024 · Unlock the full potential of your solar energy system by learning how to connect solar batteries in parallel. This comprehensive guide explores the benefits of increased ...



[How to Connect Lithium Solar Batteries in Series & Parallel](#)

May 5, 2024 · Connecting lithium solar batteries in series or parallel is essential for customizing energy storage systems. In a series connection, the voltage increases while the capacity ...

[How to Connect Solar Batteries in Parallel for ...](#)

Oct 26, 2024 · Unlock the full potential of your solar energy system by learning how to connect solar batteries in parallel. This comprehensive ...



[How to Balance Lithium Batteries with Parallel BMS?](#)

Sep 1, 2023 · A parallel BMS regulates the current flow between 2 or multiple batteries connected in parallel, learn how it works and how to connect it.



[Can a lithium battery pack be used in parallel?](#)

Nov 21, 2025 · It has in - depth articles on lithium battery characteristics, parallel connections, and more. Industry reports on lithium battery applications and best practices. These reports are ...



[Connecting Lithium Solar Batteries In Series And In Parallel](#)

Aug 11, 2024 · Wiring lithium solar batteries in series and in parallel enhances energy storage, consistent with the continent's vision for green energy. Lithium batteries can be connected ...

[How to Connect Lithium Solar Batteries in...](#)

May 5, 2024 · Connecting lithium solar batteries in series or parallel is essential for customizing energy storage systems. In a series connection, ...



[Paralleling Lithium Batteries in Solar Systems: Principles.](#)

Sep 15, 2025 · Solar power generation relies on sunlight, with peak power generation during the day and zero power generation at night. This requires lithium batteries to store sufficient ...



Batteries in Series vs Parallel: Understand The Differences

Nov 18, 2025 · Imagine you're setting up a solar power system for your off-grid cabin or building an electric vehicle from scratch. You've got your batteries ready, but now comes a crucial ...



Contact Us

For technical specifications, project proposals, or partnership inquiries, please visit:
<https://bukhobuhle.co.za>

Scan QR Code for More Information



<https://bukhobuhle.co.za>