

# Can the chassis 12v power supply be used as an inverter





## Overview

---

What is a 12V DC power inverter?

This is where a power inverter comes in. Definition and Working Principle A 12V DC power inverter is a device that converts low-voltage direct current (DC) power from a 12V battery (such as a car battery or deep-cycle battery) into 120V alternating current (AC) power, making it suitable for household appliances and electronic devices.

What is a power inverter?

Power inverters are handy gadgets that convert 12V DC input into 110V or 220V AC output. They are useful in cars because they allow you to use electronic devices that require the type of electricity available from electrical outlets at home.

What is a car inverter?

A car inverter is a kind of converter suitable for automobile power supply. Indirectness is a kind of power conversion from a DC power supply to an AC current. It can convert the 12V DC power supply of the car battery into 220V AC current.

Are 12V inverters commonly used in RVs and solar power systems?

Yes, 12V inverters are commonly used in RVs and solar power systems. When choosing an inverter for these setups, ensure that it is compatible with your battery bank and solar panel capacity. This ensures your system runs efficiently and can handle the load of various devices without issues.



## Can the chassis 12v power supply be used as an inverter

---

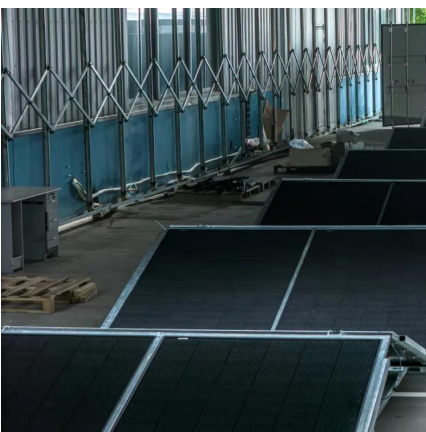


### [What is a Car Inverter and How does it Work?](#)

Jan 30, 2023 · A car inverter is a kind of converter suitable for automobile power supply. Indirectness is a kind of power conversion from a DC ...

### [12 Volt DC Power Inverter: In-Depth Learning and Buying ...](#)

Mar 31, 2025 · A 12-volt DC power inverter is an essential device for converting 12V direct current (DC) from a battery into 120V alternating current (AC), allowing you to power standard ...



### [Wiring Power Inverters In Cars: A Step-By-Step Guide](#)

Jul 23, 2025 · Power inverters are handy gadgets that convert 12V DC input into 110V or 220V AC output. They are useful in cars because they allow you to use electronic devices that require ...

### [Car Battery Inverter Guide: Power Your Devices Anywhere ...](#)

Jun 24, 2025 · Learn how to safely use a car battery inverter, how long it lasts, what battery to choose, and key tips for powering devices off-grid or during outages.



### [Wiring Power Inverters In Cars: A Step-By ...](#)

Jul 23, 2025 · Power inverters are handy gadgets that convert 12V DC input into 110V or 220V AC output. They are useful in cars because they allow ...



### [How to Install a Car Inverter? , inverter](#)

May 24, 2024 · The car inverter can convert DC 12V direct current into AC 220V alternating current, which is the same as the mains power, for use ...



### [12 Volt DC Power Inverter: In-Depth Learning ...](#)

Mar 31, 2025 · A 12-volt DC power inverter is an essential device for converting 12V direct current (DC) from a battery into 120V alternating ...





[Am I supposed to ground the inverter or the battery or both ...](#)

Jun 26, 2017 · What is the make and model of inverter? Can you link to the installation instructions? Also, I notice that you show a 40A fuse in series with the inverter on the DC side. ...

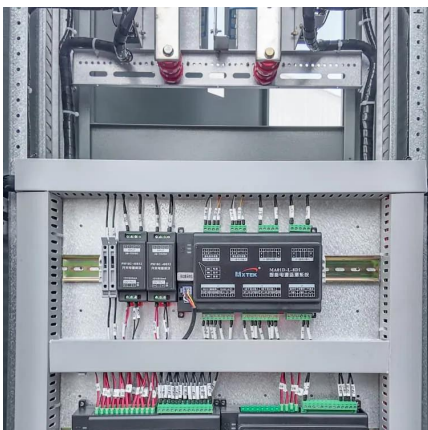


[The Ultimate Guide to Portable Power ...](#)

Nov 8, 2024 · A portable power inverter for cars is a device designed to convert the 12V DC (direct current) power stored in a car's battery into ...

[Use vehicle chassis as inverter negative conductor? Pros/Cons](#)

Jun 16, 2020 · Installing a 1000W inverter in my pickup truck (12V-100A max) which will connect to my trucks starting battery. I was intending on using #4AWG cable for both positive and ...



[Can a Car Inverter Be Used at Home?](#)

Jun 5, 2024 · With the growing demand for versatile power solutions, many people are exploring the possibility of using car inverters at home. A car inverter, typically used to convert a ...



### [Can I Use A Car Battery For An Inverter? Connecting For Backup Power](#)

Feb 7, 2025 · Yes, you can use a car battery with an inverter to power electronic devices like laptops and chargers. Ensure the battery's compatibility and efficiency with the inverter. This ...



### [The Ultimate Guide to Portable Power Inverter for Cars: ...](#)

Nov 8, 2024 · A portable power inverter for cars is a device designed to convert the 12V DC (direct current) power stored in a car's battery into 110V or 220V AC (alternating current) power.

### [How to Install a Car Inverter? , inverter](#)

May 24, 2024 · The car inverter can convert DC 12V direct current into AC 220V alternating current, which is the same as the mains power, for use by general electrical appliances. It is a ...



### [What is a Car Inverter and How does it Work?](#)

Jan 30, 2023 · A car inverter is a kind of converter suitable for automobile power supply. Indirectness is a kind of power conversion from a DC power supply to an AC current. It can ...



ac

Jan 2, 2019 · I have a pure sine wave inverter, it charges a 12V battery and converts 12V from battery to 220V during a power cut. Since it can output 12V to charge the battery at quite a ...



### [Can a Car Inverter Be Used at Home?](#)

Jun 5, 2024 · With the growing demand for versatile power solutions, many people are exploring the possibility of using car inverters at home. A car ...

## Contact Us

---

For technical specifications, project proposals, or partnership inquiries, please visit: <https://bukhobuhle.co.za>

**Scan QR Code for More Information**



<https://bukhobuhle.co.za>