

Communication system base station section





Overview

What is a base station in a telecommunications network?

A base station is a critical component in a telecommunications network. A fixed transceiver that acts as the central communication hub for one or more wireless mobile client devices. In the context of cellular networks, it facilitates wireless communication between mobile devices and the core network.

What are base stations & how do they work?

Base stations are the critical components that enable mobile phones and other devices to connect to cellular networks. Here's how they work in a typical mobile network: Signal Transmission and Reception: Mobile devices communicate with the nearest base station via radio waves.

What are the components of a base station?

The base station will have one or more RF antennas installed to transmit and receive RF signals from other devices. The block diagram of a base station typically includes the following key components: Baseband Processor: The baseband processor too deals with different communication protocols and interfaces with mobile network infrastructure.

What is a base station in a Wi-Fi network?

The base station in a Wi-Fi network is a device that connects to an internet service provider (ISP) and enables wireless communication between devices such as computers, smartphones, and tablets. It acts as a central hub for the network, transmitting and receiving data between the devices and the ISP.



Communication system base station section



[Engineering:Base station subsystem](#)

Jul 13, 2024 · The base station subsystem (BSS) is the section of a traditional cellular telephone network which is responsible for handling traffic and signaling between a mobile phone and ...

[What is a Base Station in Telecommunications?](#)

What is a Base Station? A base station is a critical component in a telecommunications network. A fixed transceiver that acts as the central communication hub for one or more wireless mobile ...



[What Is the Role of a Base Station in Wireless Communication?](#)

Jun 27, 2025 · Base stations are the backbone of wireless communication networks, playing a pivotal role in signal transmission, network reliability, and high-speed data connectivity. As ...

[Understanding Base Stations: The Backbone of Wireless Communication](#)

Jan 6, 2025 · In today's digital age, reliable and high-speed communication is more essential than ever. Whether it's for mobile phones, internet services, or IoT (Internet of Things) devices, ...



[1. What Is a Base Station and What Are Its Core Components?](#)

Nov 28, 2025 · A mobile communication base station is the radio facility that covers a specific area and enables data transmission between mobile phones and the core network. It is the ...



[Base Station System Structure](#)

Jan 28, 2011 · 2 Base Station Background The intent of this section is to explore the role of base stations in communications systems, and to develop a reference model that can be used to ...



[Exploring communication base stations](#)

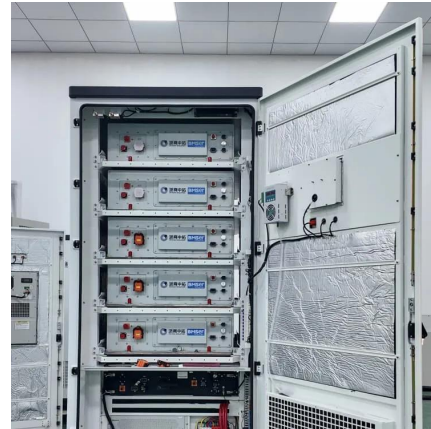
Dec 18, 2024 · A base station is mainly composed of a base station transceiver station (BTS) and a base station controller (BSC). BTS is ...





[What Is A Base Station?](#)

Apr 22, 2024 · A base station is an integral component of wireless communication networks, serving as a central point that manages the transmission and reception of signals between ...



Base Stations

Jul 23, 2025 · It provides for the interchange of data between the base station and other network components, hence communication with extrinsic systems and processes. Power Supply: The ...

[Exploring communication base stations](#)

Dec 18, 2024 · A base station is mainly composed of a base station transceiver station (BTS) and a base station controller (BSC). BTS is responsible for the reception and transmission of ...



[Base Stations and Cell Towers: The Pillars of Mobile ...](#)

May 16, 2024 · Base stations and cell towers are critical components of cellular communication systems, serving as the infrastructure that supports seamless mobile connectivity. These ...



Contact Us

For technical specifications, project proposals, or partnership inquiries, please visit:
<https://bukhobuhle.co.za>

Scan QR Code for More Information



<https://bukhobuhle.co.za>