

Does the battery 12v inverter also need 12v





Overview

How much battery does a 12 volt inverter need?

As a rule of thumb, the minimum required battery capacity for a 12-volt system is around 20 % of the inverter capacity. For 24-volt inverters, it is 10 %. The battery capacity for a 12-volt Mass Sine 12/1200, for instance, is 240 Ah, while a 24-volt Mass Sine 24/1500 inverter would require at least 150 Ah.

What size inverter for a 12V 200Ah battery?

For a 12V 200Ah battery (2.4kWh), a 2000W inverter is ideal. Formula: $\text{Inverter Wattage} \leq (\text{Battery Voltage} \times \text{Ah Rating} \times 0.8)$. Factor in surge power needs but prioritize sustained loads. Always check the battery's max discharge rate (C-rate) to avoid exceeding safe limits. When sizing for 24V or 48V systems, recalculate using the higher voltage.

What wattage Inverter should I use?

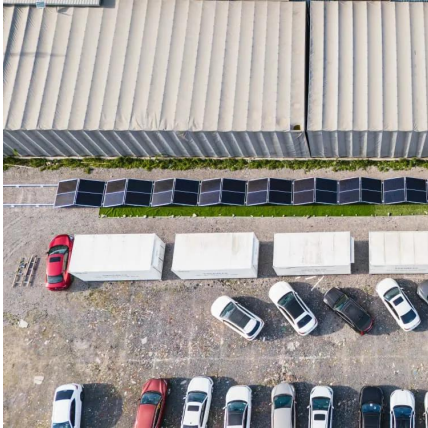
Match the inverter's continuous wattage rating to the battery's discharge capacity. For a 12V 200Ah battery (2.4kWh), a 2000W inverter is ideal. Formula: $\text{Inverter Wattage} \leq (\text{Battery Voltage} \times \text{Ah Rating} \times 0.8)$. Factor in surge power needs but prioritize sustained loads.

How much battery does a 24 volt inverter use?

For 24-volt inverters, it is 10 %. The battery capacity for a 12-volt Mass Sine 12/1200, for instance, is 240 Ah, while a 24-volt Mass Sine 24/1500 inverter would require at least 150 Ah. The indicated battery capacity is only for the inverter. The capacity required for other loads should be added to it. How much power does an inverter consume?



Does the battery 12v inverter also need 12v

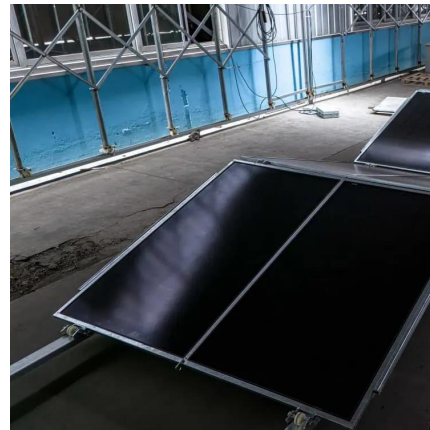


[Best Inverter For 12v Battery \[Updated: December 2025\]](#)

Aug 3, 2025 · A 12V battery inverter is a device that converts direct current (DC) energy from a 12V battery into alternating current (AC) energy. This allows the use of battery power for ...

[What Is A 12V Inverter Battery?](#)

Jul 11, 2025 · A 12V inverter battery is a deep-cycle energy storage unit designed to power inverters, converting DC to AC for household or commercial appliances. Typically using lead ...



[Frequently Asked Questions about Inverters](#)

Frequently Asked Questions about Inverters How much battery capacity do I need with an inverter? As a rule of thumb, the minimum required battery capacity for a 12-volt system is ...



[How to Wire Inverter to Battery - No Sparks, ...](#)

Jul 18, 2025 · Start with the basics: an inverter, a 12V or 24V battery, and quality battery cables. You'll also need a wrench or socket set, wire ...



[How to Wire Inverter to Battery - No Sparks. Just Power](#)

Jul 18, 2025 · Start with the basics: an inverter, a 12V or 24V battery, and quality battery cables. You'll also need a wrench or socket set, wire strippers, and electrical tape.



[How Big of an Inverter Can My Car Battery Handle?](#)

Mar 26, 2025 · To determine the maximum inverter power that your vehicle's battery can support, you need to know the battery's rated voltage (12V for most automotive batteries) and the ...



[What size inverter can you run off a car battery?](#)

Aug 11, 2025 · What Is a Power Inverter and How Does It Work with a Car Battery? A power inverter converts the car battery's 12V DC (direct current) voltage into 110V or 220V AC ...





[Best Inverter For 12v Battery \[Updated: ...](#)

Aug 3, 2025 · A 12V battery inverter is a device that converts direct current (DC) energy from a 12V battery into alternating current (AC) energy. This ...

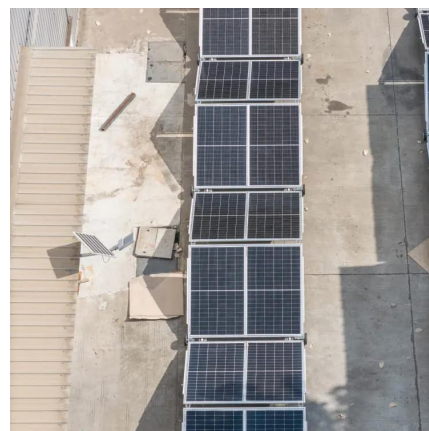


[Can an Inverter Be Too Big for Your Battery System?](#)

How to Calculate the Right Inverter Size for Your Battery Match the inverter's continuous wattage rating to the battery's discharge capacity. For a 12V 200Ah battery (2.4kWh), a 2000W inverter ...

[how to use 12V inverter on 24 volt \(2 battery\) system](#)

Jan 24, 2024 · I have a 12V to 120V Inverter (1800 Watts). So have to go with 24V for 2 PVs to get more power (1300W max I think) - What is the best way to connect it? Straight to a 12 volt ...



[How Big of an Inverter Can My Car Battery ...](#)

Mar 26, 2025 · To determine the maximum inverter power that your vehicle's battery can support, you need to know the battery's rated voltage (12V for ...



[Can I Attach My Small Inverter Directly to the Battery?](#)

Jul 14, 2025 · Yes, you can attach a small inverter directly to a battery, but doing it safely requires understanding voltage compatibility, wire sizing, and overload risks. Many DIYers assume it's ...



[How Much Battery Capacity Do You Need With a 12V Inverter?](#)

Jun 14, 2025 · Discover how to calculate the ideal battery capacity for a 12V inverter using simple math, practical examples, and money-saving tips for daily power.

Contact Us

For technical specifications, project proposals, or partnership inquiries, please visit:
<https://bukhobuhle.co.za>

Scan QR Code for More Information



<https://bukhobuhle.co.za>