

Dublin Mobile Station Communication Network Base Station





Overview

What is a mobile base station?

A mobile base station, also called a base transceiver station (BTS), is a fixed radio transceiver in any mobile communication network or wide area network (WAN). The base station connects mobile devices to the network and routes them to other terminals in the network or to the core network of a mobile operator. [Read more Explore Mobile base.](#)

Why are base stations important in cellular communication?

Base stations are important in the cellular communication as it facilitate seamless communication between mobile devices and the network communication. The demand for efficient data transmission are increased as we are advancing towards new technologies such as 5G and other data intensive applications.

How do base stations work?

Base stations use antennas mounted on cell towers to send and receive radio signals to and from mobile devices within their coverage area. This communication enables users to make voice calls, send texts, and access data services, connecting them to the wider world. [Network Management and Optimization.](#)

What is a base station in a cellular network?

Base Stations A base station, often housed within a cell site, is the central point in a cellular network where signals are transmitted and received from mobile devices. It consists of electronic equipment, including transceivers, antennas, and signal processors, that manage the communication within a specific geographical area or “cell.”



Dublin Mobile Station Communication Network Base Station

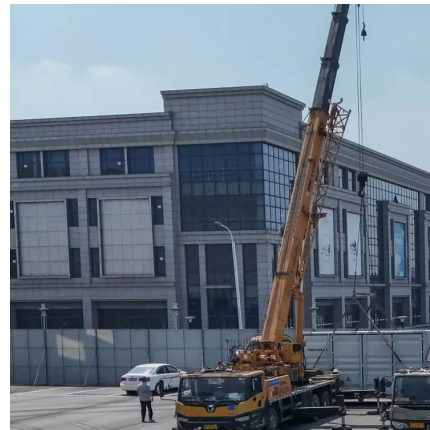


EMF

Some base stations have radio communications dishes (shaped like a drum) that connect the base station to the rest of the base station network. top What are 2G and 3G networks? 3G, or ...

[Base Stations and Cell Towers: The Pillars of Mobile ...](#)

May 16, 2024 · Base stations and cell towers are critical components of cellular communication systems, serving as the infrastructure that supports seamless mobile connectivity. These ...



[Types and Applications of Mobile Communication Base Stations](#)

Oct 11, 2024 · Mobile communication base station is a form of radio station, which refers to a radio transceiver station that transmits information between mobile phone terminals through a ...



[Understanding Base Stations in Mobile Communication](#)

Nov 21, 2025 · A base station is a fixed point that enables wireless communication between mobile devices and the network. These stations consist of radio transceivers, antennas, and a ...



[Mobile Communication Network Base Station Deployment ...](#)

Apr 13, 2025 · This paper discusses the site optimization technology of mobile communication network, especially in the aspects of enhancing coverage and optimizing base station layout. ...



[Types and Applications of Mobile ...](#)

Oct 11, 2024 · Mobile communication base station is a form of radio station, which refers to a radio transceiver station that transmits information ...



Base Stations

Jul 23, 2025 · Construction of Base Station Why are Base Stations so Important? Base stations are important in the cellular communication as it facilitate seamless communication between ...





[Mobile communication base station . Shanghai Warner ...](#)

The mobile communication base station refers to radio wireless transmission between mobile communication switching center and telephone terminal. The base station plays an important ...



Siteviewer

Siteviewer Update: Following the publication of Decision D23/24 regarding the publication of radio spectrum licence information, ComReg has updated its Siteviewer tool to publish, in addition to ...

Contact Us

For technical specifications, project proposals, or partnership inquiries, please visit:
<https://bukhobuhle.co.za>

Scan QR Code for More Information



<https://bukhobuhle.co.za>