

## **Eg8010 power frequency inverter voltage is low**





## Overview

---

What is eg8010 power converter?

It applies to DC-DC-AC two stage power converter system or DC-AC single stage low power frequency transformer system for boosting. EG8010 can achieve 50/60Hz pure sine wave with high accuracy, low harmonic and distortion by external 12MHz crystal oscillator.

What is the EG8010?

The EG8010 is a DC-DC-AC two stage power converter system or DC-AC single stage low power frequency transformer system for boosting. It can achieve 50/60Hz pure sine wave with high accuracy, low harmonic and distortion using an external 12MHz crystal oscillator.

What is eg8010 ASIC?

Features Description EG8010 is a digital pure sine wave inverter ASIC (Application Specific Integrated Circuit) with complete function of built-in dead time control. It applies to DC-DC-AC two stage power converter system or DC-AC single stage low power frequency transformer system for boosting.

What is eg8010 SPWM – single-phase pure sine wave inverter ASIC?

Function: SPWM – Single-phase pure sine wave inverter ASIC Package: LQFQ32  
Type Manufacturer: EG Microelectronics Image : The EG8010 is a digital pure sine wave inverter ASIC (Application Specific Integrated Circuit ) with complete function of built-in dead time control.



## Eg8010 power frequency inverter voltage is low

---



### Pin configuration

2 fixed voltage variable frequency mode (the VVVF pin to "0" low level) 0 to 100Hz (FRQSEL1 FRQSEL0 = 10) or 0Hz to 400Hz (FRQSEL1, FRQSEL0 = 11), FRQADJ pin external ...

### [EGS002 Sinusoid Inverter Driver Board User Manual](#)

EG8010 is a digital pure sine wave inverter ASIC (Application Specific Integrated Circuit) with complete function of built-in dead time control. It applies to DC-DC-AC two stage power ...



### [EGP1000W Manual - Sine Wave Inverter ...](#)

Sep 27, 2024 · Description The EGP1000W inverter power board is a dedicated EG8010 SPWM chip and EGS001 sine wave inverter driver ...



### [MAKING A LOW FREQUENCY INVERTER ...](#)

Jun 7, 2024 · Maybe make few smaller power conversion projects first while trying to figure out the purpose and a way to define of every component of ...



### [EG8010 Datasheet PDF - SPWM Control - Inverter ASIC](#)

Mar 12, 2022 · It applies to DC-DC-AC two stage power converter system or DC-AC single stage low power frequency transformer system for boosting. EG8010 can achieve 50/60Hz pure sine ...



### [Inverter of 500W with EGS002 module](#)

Nov 7, 2024 · I have followed the same EGS002 module and EG8010 datasheet schematic of low power frequency transformer for making 500W inverter. Currently I am facing an issue with ...



### [Single-phase Online Uninterruptible Power Supply Based ...](#)

Aug 10, 2022 · In the inverter power board, the regulated DC power is directly inputted, and the power supply interface outputs low-voltage AC. The LT8705 is a high-performance step-down ...







## Microsoft Word

EG8010 is a digital pure sine wave inverter ASIC (Application Specific Integrated Circuit) with complete function of built-in dead time control. It applies to DC-DC-AC two stage power ...



## EG8010

EG8010 is a digital and fully functional pure sine wave inverter generator chip with built-in dead zone control. It is applied to DC-DC AC two-stage power conversion architecture or DC-AC ...



## [EG8010 Datasheet PDF - SPWM Control - ...](#)

Mar 12, 2022 · It applies to DC-DC-AC two stage power converter system or DC-AC single stage low power frequency transformer system for ...



## [EGS002 Pure Sine Wave Inverter Driver Board ...](#)

Ideal for DIY inverter projects, UPS systems, and solar power inverters, it ensures efficient and reliable conversion from DC to AC power with ...





### [Inverter operation using ASIC EG8010](#)

Oct 28, 2019 · The heart of this card lies in the chip installed on it called EG8010. It represents a digital inverter sine wave, which allows to totally control the dead time and applied to Full ...

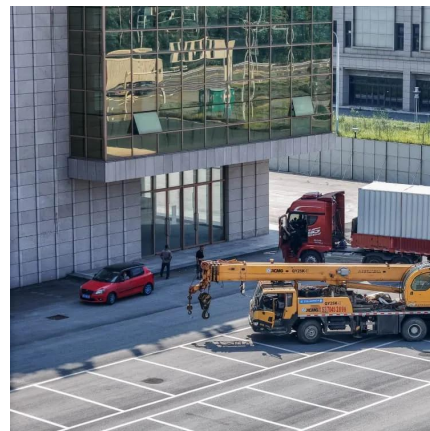


### [Design and Implementation of a Single Phase Inverter Based on EG8010](#)

Nov 23, 2025 · Inverter technology plays a crucial role in the development and utilization of renewable energy sources such as solar and wind power. Due to advantages like high ...

### [EG8010 inverter output voltage is low](#)

EGP1000W inverter power board is a dedicated EG8010 SPWM chip and EGS001 sine wave inverter driver board dedicated power floor, for 3KVA following inverter unit. transformer DC ...



### [EG8010 Datasheet: ASIC for SPWM Control and Sinusoid Inverter](#)

During the communication, master sends two bytes data: the first is command byte and the second is data byte. When server receives two bytes, immediately returns four data bytes. ...



### [EG8010 demo board EGS002 Sinusoid Inverter Driver ...](#)

Jan 23, 2023 · EG8010 is a digital pure sine wave inverter ASIC (Application Specific Integrated Circuit) with complete function of built-in dead time control. It applies to DC-DC-AC two stage ...



## Contact Us

---

For technical specifications, project proposals, or partnership inquiries, please visit:  
<https://bukhobuhle.co.za>

### Scan QR Code for More Information



<https://bukhobuhle.co.za>