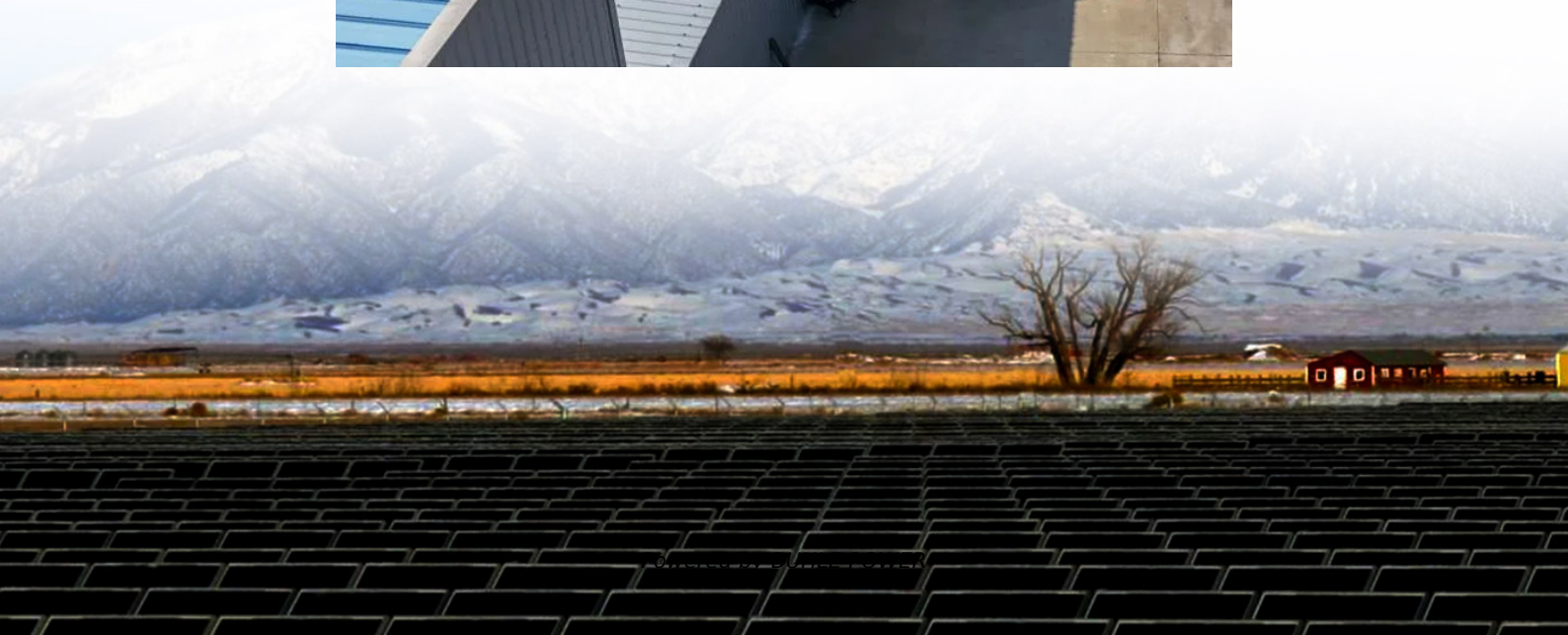


How big a battery should I use with a 1100w inverter





Overview

Can a lithium ion battery power a 1200W inverter?

Lithium-ion batteries tolerate higher discharge rates (up to 1C) compared to lead-acid (0.5C). A 100Ah LiFePO4 battery can safely power a 1200W inverter, while lead-acid should cap at 600W. Gel and AGM batteries have intermediate tolerances. Mismatching chemistry and inverter size accelerates degradation and voids warranties.

What is the recommended battery size for an inverter?

Interpreting Results: Once you input the required data, the calculator will generate the recommended battery size in ampere-hours (Ah). For instance, if your power consumption is 500 watts, the usage time is 4 hours, and the inverter efficiency is 90%, the calculator might suggest a battery size of approximately 222 Ah.

How many batteries to run a 1000W inverter?

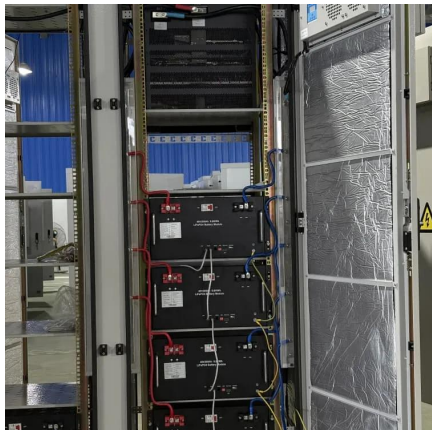
Now we need to divide the available energy with the used energy:
 $864\text{Wh}/50\text{W} = 17$ hours or run time. If you increase the battery capacity you can run the fridge for longer. Conclusion You need one 12V 100Ah battery or four 12V 100Ah lead-acid batteries in parallel to run a 1,000W inverter.

How much battery should a 500 watt inverter use?

For instance, if your power consumption is 500 watts, the usage time is 4 hours, and the inverter efficiency is 90%, the calculator might suggest a battery size of approximately 222 Ah. Practical Tips: Ensure all input values are accurate to avoid skewed results.



How big a battery should I use with a 1100w inverter



[How to Calculate the Right Inverter Battery Capacity for Your ...](#)

Feb 24, 2025 · Learn how to calculate the right inverter battery capacity for your needs with a simple formula. Understand power requirements, efficiency losses, and the best battery types ...

[Can an Inverter Be Too Big for Your Battery System?](#)

Why Battery Chemistry Matters in Inverter Sizing
Lithium-ion batteries tolerate higher discharge rates (up to 1C) compared to lead-acid (0.5C). A 100Ah LiFePO4 battery can safely power a ...



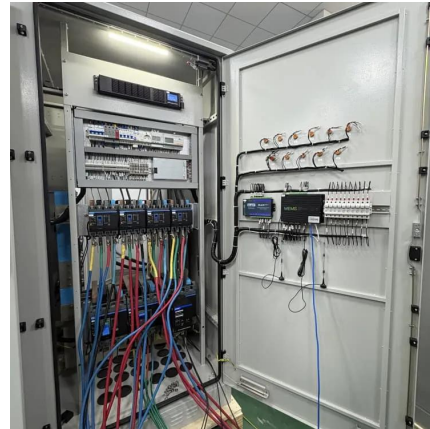
[How Many Batteries for 1000Watt Inverter - PowMr](#)

Dec 26, 2024 · Discover the essentials of determining 'how many batteries for a 1000W inverter' in this comprehensive guide, including battery sizing and runtime calculations.



[Calculate Battery Size For Any Size Inverter \(Using Our ...](#)

Mar 3, 2023 · So I have made it easy for you, use the calculator below to calculate the battery size for 200 watt, 300 watt, 500 watt, 1000 watt, 2000 watt, 3000 watt, 5000-watt inverter

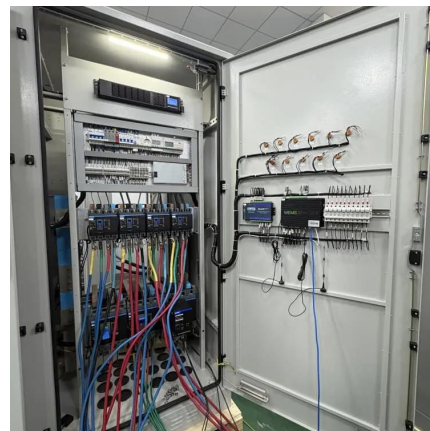


[How Many Batteries For A 1000 Watt Inverter?? + Diagrams](#)

May 4, 2023 · Discover the factors to consider when determining how many batteries you need for a 1,000W inverter, including battery capacity, voltage, and load requirements.

[Battery to Inverter Calculator](#)

Jan 14, 2024 · Calculate the optimal battery size for your inverter with our battery to inverter calculator; find out the required battery capacity for your inverter with our battery power ...



[How to Calculate the Right Inverter Battery Capacity for Your Needs](#)

Feb 24, 2025 · Learn how to calculate the right inverter battery capacity for your needs with a simple formula. Understand ...





[How Many Batteries Do I Need for a 1000W ...](#)

Jul 2, 2025 · Size for peak loads: A 2000W inverter may need 2x the battery capacity if you're powering a motor (like a fridge compressor) with a high ...



[How Many Batteries Do I Need for a 1000W or 2000W Power Inverter?](#)

Jul 2, 2025 · Size for peak loads: A 2000W inverter may need 2x the battery capacity if you're powering a motor (like a fridge compressor) with a high startup surge. Add solar charging: ...

[How to Calculate the Right Battery Size for Your Inverter ...](#)

Calculating the correct battery size ensures that your inverter system can meet your power needs without leaving you in the dark during outages. An undersized battery may not provide enough ...



[1000W Inverter: How Many Batteries Do You Really Need?](#)

Oct 4, 2025 · Learn how many batteries you really need for a 1000W inverter. Compare lead-acid vs lithium setups, wiring, fuse size, and battery life tips.



[Calculate Battery Size for Inverter Calculator](#)

Mar 14, 2025 · The Calculate Battery Size for Inverter Calculator helps you determine the optimal battery capacity needed to support your inverter system. By inputting critical parameters such ...



[Calculate Battery Size for Inverter Calculator](#)

Mar 14, 2025 · The Calculate Battery Size for Inverter Calculator helps you determine the optimal battery capacity needed to support your inverter ...

[How Many Batteries for 1000Watt Inverter - ...](#)

Dec 26, 2024 · Discover the essentials of determining 'how many batteries for a 1000W inverter' in this comprehensive guide, including battery sizing ...



[How Many Batteries For A 1000 Watt ...](#)

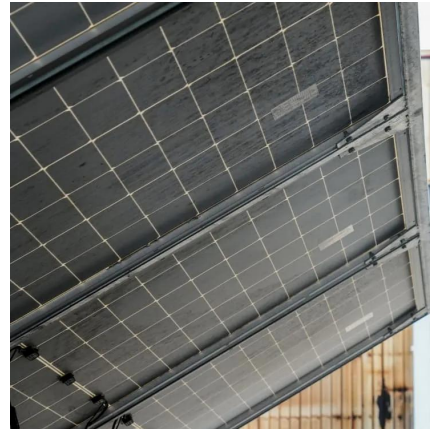
May 4, 2023 · Discover the factors to consider when determining how many batteries you need for a 1,000W inverter, including battery capacity, ...



[How to Calculate the Right Battery Size for ...](#)

Calculating the correct battery size ensures that your inverter system can meet your power needs without leaving you in the dark during outages.

...



Contact Us

For technical specifications, project proposals, or partnership inquiries, please visit:
<https://bukhobuhle.co.za>

Scan QR Code for More Information



<https://bukhobuhle.co.za>