

How big a solar panel is needed for a 200w solar street light





Overview

How do I choose the right size for a solar LED street light?

Determining the right size for a solar LED street light system is vital for maintaining peak performance, maximizing energy efficiency, and ensuring long-term dependability. Proper sizing involves balancing power consumption, battery capacity, and solar panel efficiency to meet lighting requirements while considering environmental conditions.

How to choose a solar-powered street lighting system?

Understanding the power consumption of a solar-powered street lighting system is the first step in determining the appropriate specifications. The total energy consumption depends on the wattage of the LED fixture and its operating hours per night. Higher-wattage lights require larger battery storage and solar panel capacity. 2.

How do I choose the best solar street light?

This guide breaks down key factors like lumens, battery capacity, solar panel type, and installation requirements to help distributors, wholesalers, traders, and retailers choose high-quality products. To choose the best solar street light, consider lumens per watt efficiency, battery capacity, solar panel quality, and installation environment.

How do I design a solar street light?

Designing a solar street light starts with understanding daily energy consumption and generation. Once you master that, you can size batteries and panels accurately. Many people guess their way through the design. That leads to power shortages or overspending. I will walk you through the process step by step.



How big a solar panel is needed for a 200w solar street light



[Soli Lighting Solar Lighting Calculation / Sizing](#)

Soli Lighting Solar Lighting Calculation / Sizing In order to calculate the solar lighting requirements for a given area, you need to consider several factors, including the size of the area, the ...

[How big a photovoltaic panel is needed for a 200w solar street light](#)

How much solar power does a street light use?
For a street light that consumes 900WH, after calculation, the battery panel power required by the former $=900 \times 1.333 / 6.2 = 193.5$ Wp, and the ...



[LED Solar Street Light Design Guide \(2025 ...](#)

Feb 12, 2025 · 1. Solar Street Light System Design Composition and Selection Standards 1. Core Component Configuration 2.Solar Street ...



[How big is a 200W solar panel?](#)

Dec 2, 2023 · Most 200-watt solar panels on the market today measure roughly 3.5 to 4 feet long by 2 to 2.5 feet wide. Thickness is usually around 1 to 1.5 inches. Exact dimensions can vary ...



[Soli Lighting Solar Lighting Calculation / ...](#)

Soli Lighting Solar Lighting Calculation / Sizing In order to calculate the solar lighting requirements for a given area, you need to consider several ...



[How to Choose Solar LED Street Light: The Ultimate Guide](#)

Feb 14, 2025 · Given the many choices available, finding the perfect solar LED street light can be daunting. A poor choice can result in low brightness, short battery life, and inefficient solar ...



[How to design and calculate a solar street light system?](#)

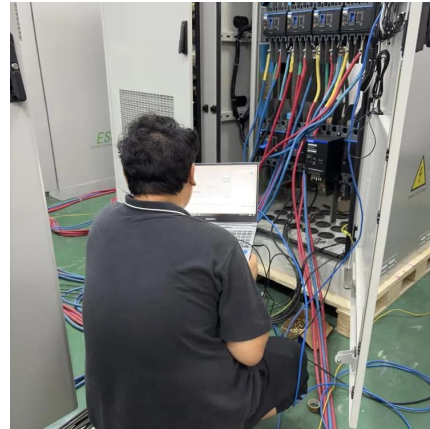
Designing a solar street light starts with understanding daily energy consumption and generation. Once you master that, you can size batteries and panels accurately. Solar Street Light Setup ...





2025 Guidance of Solar Street Light Design Caculation

Oct 20, 2022 · Conventional solar street lights can not meet the lighting requirements. then we need to consider enlarging the size of the solar panel and the capacity of the battery, another ...

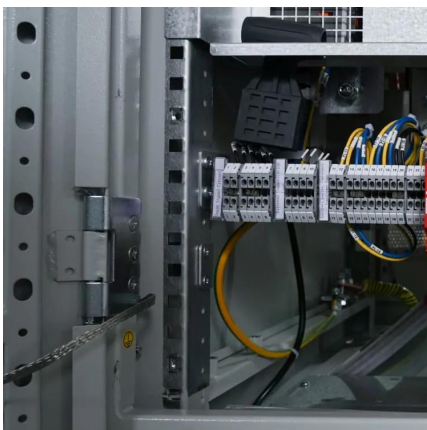


How big are the solar panels on street lights?

Nov 30, 2025 · A higher - wattage street light will need more energy to operate, which means a larger solar panel is required to generate that energy. For example, a 60w Solar Street Lamp ...

How big is a 200W solar panel?

Dec 2, 2023 · Most 200-watt solar panels on the market today measure roughly 3.5 to 4 feet long by 2 to 2.5 feet wide. Thickness is usually ...



Is a 200w solar street light suitable for large

Jul 31, 2025 · The intelligent control systems in our 200w solar street lights allow for automatic operation, adjusting the lighting intensity based on the time of day and ambient light ...



[LED Solar Street Light Design Guide \(2025 Edition\)](#)

Feb 12, 2025 · 1. Solar Street Light System Design Composition and Selection Standards 1. Core Component Configuration 2. Solar Street Light Key Design Parameter Calculations 1. Solar ...



[2025 Guidance of Solar Street Light Design ...](#)

Oct 20, 2022 · Conventional solar street lights can not meet the lighting requirements. then we need to consider enlarging the size of the solar ...



[Photovoltaic Panel Sizing Guide for Solar Street Lights](#)

Ever wondered why some solar street lights outshine others even in cloudy weather? The secret sauce lies in proper photovoltaic panel sizing - it's like matching running shoes to a marathon ...



Contact Us

For technical specifications, project proposals, or partnership inquiries, please visit:
<https://bukhobuhle.co.za>



Scan QR Code for More Information



<https://bukhobuhle.co.za>