

How long does it take to install a lithium iron phosphate battery station cabinet





Overview

How do I install a LiFePO4 lithium battery?

Follow these detailed steps to successfully install your LiFePO4 lithium battery. Before you begin, always prioritize safety. Disconnect power from the entire system. If you're replacing an older battery, turn off any inverters, charge controllers, or other components connected to the battery system.

Should you install a lithium deep cycle battery?

Installing a lithium deep cycle battery like a LiFePO4 battery can power your system reliably and efficiently. Whether you are installing it in a solar power system, RV, or marine application, proper installation is essential for ensuring optimal performance and safety.

What is a lithium iron phosphate (LiFePO4) battery?

A Lithium Iron Phosphate (LiFePO4) battery is a type of rechargeable lithium-ion battery that utilizes lithium iron phosphate as its cathode material. Known for its stable chemical composition and safety features, this battery type is widely used in various applications requiring reliable energy storage.

What is a LiFePO4 battery?

Known for its stability and safety, LiFePO4 batteries offer a longer lifespan and higher thermal stability compared to other lithium batteries, such as lithium cobalt oxide (LiCoO2) or lithium manganese oxide (LiMn2O4) batteries.



How long does it take to install a lithium iron phosphate battery sta



[Step-by-Step Guide: DIY Lithium Iron ...](#)

Apr 21, 2025 · The world of battery technology has come a long way, and Lithium Iron Phosphate (LiFePO₄) batteries have emerged as a popular ...

[Implementing Lithium Iron Phosphate Battery Systems Simply](#)

Sep 12, 2025 · Enter the Lithium Iron Phosphate battery system - a revolutionary technology that's transforming how businesses approach energy storage.



[How to Install Lithium Battery Systems , Step ...](#)

Learn how to safely and efficiently install lithium battery systems for EVs and industrial use. Maximize energy efficiency and reduce costs with expert ...



[Everything You Need to Know About Lithium Iron Phosphate ...](#)

This revolutionary technology features lithium iron phosphate, delivering consistent performance, long runtimes and increased safety over other battery types. View all our PantheonCell(TM) ...



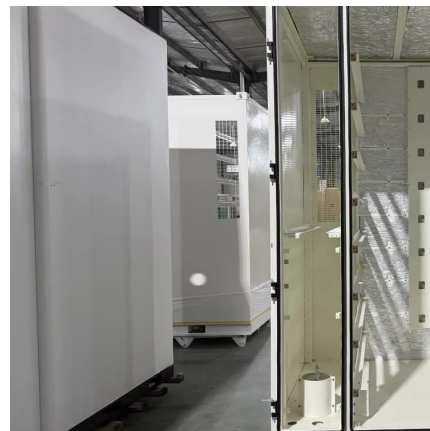
[Lithium Iron Phosphate Battery Solar: Complete 2025 Guide](#)

3 days ago · Lithium iron phosphate batteries use lithium iron phosphate (LiFePO4) as the cathode material, combined with a graphite carbon electrode as the anode. This specific ...



[How to Install Lithium Battery Systems , Step-by-Step Guide](#)

Learn how to safely and efficiently install lithium battery systems for EVs and industrial use. Maximize energy efficiency and reduce costs with expert tips. Get your quote today!



[Charging a Lithium Iron Phosphate \(LiFePO4\) Battery Guide](#)

Jan 18, 2024 · A Lithium Iron Phosphate (LiFePO4) battery is a type of rechargeable lithium-ion battery that utilizes lithium iron phosphate as its cathode material. Known for its stable ...





[How to Install a Lithium Battery System Safely and Efficiently?](#)

Apr 11, 2025 · Installing a lithium battery system is a critical process that demands attention to safety protocols, proper tools, and environmental considerations. Whether integrating with ...

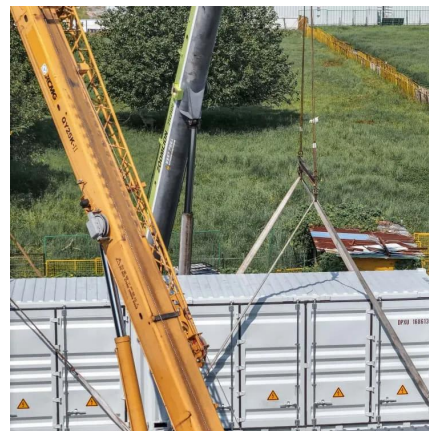


[Charging a Lithium Iron Phosphate \(LiFePO4\) ...](#)

Jan 18, 2024 · A Lithium Iron Phosphate (LiFePO4) battery is a type of rechargeable lithium-ion battery that utilizes lithium iron phosphate as its ...

[LiFePO4 Battery Installation Tutorial, Lifespan ...](#)

Apr 13, 2024 · Installing a Lithium Iron Phosphate (LiFePO4) battery requires careful attention to detail to ensure safety and optimal performance. ...



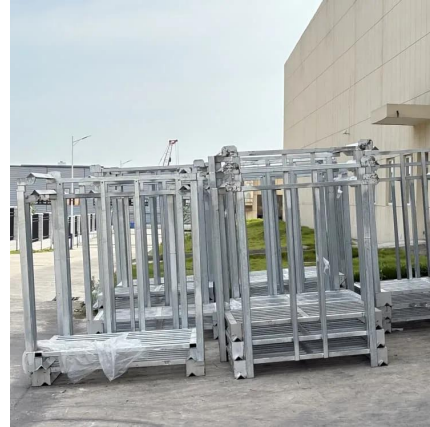
[How to Install a Lithium Battery Electrical System Safely and](#)

Apr 11, 2025 · Lithium battery electrical system installation involves configuring batteries, charge controllers, and inverters for renewable energy storage. Key steps include calculating power ...



[LiFePO4 Battery Installation Tutorial. Lifespan Optimization](#)

Apr 13, 2024 · Installing a Lithium Iron Phosphate (LiFePO4) battery requires careful attention to detail to ensure safety and optimal performance. These batteries are known for their long ...



[Can I Install Lithium Battery and Cells Myself? - WattCycle-US](#)

Dec 25, 2024 · A LiFePO4 lithium battery is a type of lithium-ion battery that uses lithium iron phosphate (LiFePO4) as the cathode material. Known for its stability and safety, LiFePO4 ...

[Step-by-Step Guide: DIY Lithium Iron Phosphate Battery ...](#)

Apr 21, 2025 · The world of battery technology has come a long way, and Lithium Iron Phosphate (LiFePO4) batteries have emerged as a popular choice due to their high energy density, long ...



[Implementing Lithium Iron Phosphate Battery ...](#)

Sep 12, 2025 · Enter the Lithium Iron Phosphate battery system - a revolutionary technology that's transforming how businesses approach ...



Contact Us

For technical specifications, project proposals, or partnership inquiries, please visit:
<https://bukhobuhle.co.za>

Scan QR Code for More Information



<https://bukhobuhle.co.za>