

# How many generator sets does a power station have





## Overview

---

What are the different types of large generator sets?

**Types of Large Generator Sets Diesel Generator Sets:** These are the most common type due to their reliability, efficiency, and wide range of applications. Diesel gensets are used in various sectors, including construction, industrial, and emergency power.

What is a generator set?

A genset is an autonomous machine capable of generating electric power by means of a heat engine that drives an alternator. It uses fuels such as diesel, gasoline, gas or hybrid technologies to produce electricity.

What are MTU diesel generator power station sets?

mtu diesel generator power station sets provide continuous power, standby power as well as hybrid power. Our diesel standby generator sets cover a complete power range with an industry-leading average load factor, reliability and availability.

What is a power station generator?

Based on diesel or gas engines, power station generators provide continuous power or grid stability power sharing when it is needed most. The systems are flexible in size and location, and readily available to meet urgent power needs. Outstanding fuel efficiency contributes to overall low lifecycle costs.



## How many generator sets does a power station have

---



### [Understanding Large Generator Sets: A Comprehensive Guide](#)

Dec 4, 2025 · Large generator sets play a crucial role in providing reliable and efficient power generation. By understanding the different types, applications, and components of gensets, ...

### [Complete Guide to Generator Sets . Electra Molins](#)

Jul 3, 2025 · Explore Electra Molins' full guide to generator sets: learn definitions, types, applications, and key sectors powered reliably worldwide.



### [Power Plant: What Are They? \(& the Types of ...](#)

Feb 24, 2012 · What is a Power Plant? A power plant (also known as a power station or power generating station), is an industrial location that is ...

## Power Stations

MTU diesel generator power station sets provide continuous power, standby power as well as hybrid power. Our diesel standby generator sets cover a complete power range with an ...



### [Power Plant: What Are They? \(& the Types of Power Plants\)](#)

Feb 24, 2012 · What is a Power Plant? A power plant (also known as a power station or power generating station), is an industrial location that is utilized for the generation and distribution of ...



### 02

Nov 22, 2019 · Shanghai Electric has provided more than 1000 sets of various generator products in total, which feature high operation efficiency and good reliability, and also have a large ...



### [Complete Guide to Generator Sets , Electra ...](#)

Jul 3, 2025 · Explore Electra Molins' full guide to generator sets: learn definitions, types, applications, and key sectors powered reliably worldwide.





### [Power Plant Generators: What It Is? How Does It Work?](#)

May 12, 2023 · Discover how power plant generators produce electricity. Learn their working principles, key components, and role in energy generation. Read more now.



### **Technical specifications of onshore power stations and gas generator sets**

Jan 3, 2025 · Summary: In conclusion, onshore power stations and gas generator sets are integral components of the power generation infrastructure, providing reliable, efficient, and ...



### [Power Plant Generators: What It Is? How ...](#)

May 12, 2023 · Discover how power plant generators produce electricity. Learn their working principles, key components, and role in energy ...



### [How many generator sets does a power station have](#)

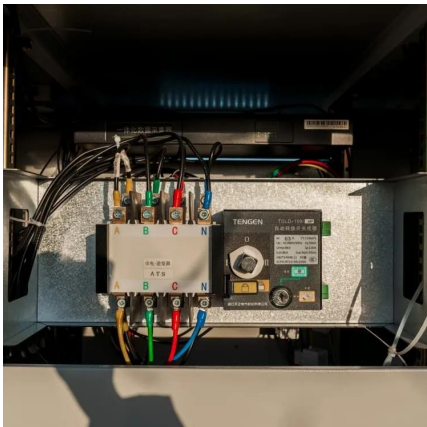
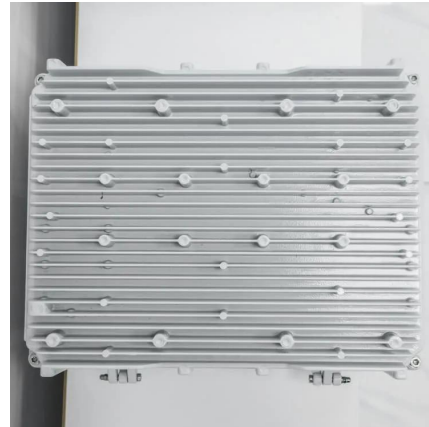
Standby generators kick in when the transfer switch detects a malfunction, at which point it will switch on almost immediately. It quickly cuts off the utility line and starts running power from ...





## [An Introduction to Electrical Generators for Power Plants](#)

Oct 5, 2020 · The distinguishing feature of a unit type station power system is that the generator and unit auxiliary transformer are permanently connected together at generator voltage and ...



## [How do power plants work? . How do we make electricity?](#)

Types of Power Plants  
How Electricity Gets to Your Home  
How The Power Grid Works  
What Does The Future Hold For Power Plants?  
We'll always need energy and especially electricity--a very versatile kind of energy we can easily use in many different ways--but that doesn't mean we'll always need power plants like the ones we have today. Environmental pressures are already forcing many countries to close coal-fired power plants that produce the greatest carbon dioxide emissions (resp See more on explain that stuff talentomagazine.es)

## **How many generator sets does a power station have**

Standby generators kick in when the transfer switch detects a malfunction, at which point it will switch on almost immediately. It quickly cuts off the utility line and starts running power from ...

## **Contact Us**

---

For technical specifications, project proposals, or partnership inquiries, please visit:  
<https://bukhobuhle.co.za>



## Scan QR Code for More Information



<https://bukhobuhle.co.za>