

How many watts does the grid-connected solar inverter have





Overview

What is a good inverter capacity for a grid-tied solar PV system?

A DC to AC ratio of 1.3 is preferred. System losses are estimated at 10%. With a DC to AC ratio of 1.3: In this example, an inverter rated at approximately 10.3 kW would be appropriate. Accurately calculating inverter capacity for a grid-tied solar PV system is essential for ensuring efficiency, reliability, and safety.

What are the different solar inverter sizes?

Solar generators range in size from small generators for short camping trips to large off-grid power systems for a boat or house. Consequently, inverter sizes vary greatly. During our research, we discovered that most inverters range in size from 300 watts up to over 3000 watts. In this article, we guide you through the different inverter sizes.

Do grid connected solar PV inverters increase penetration of solar power?

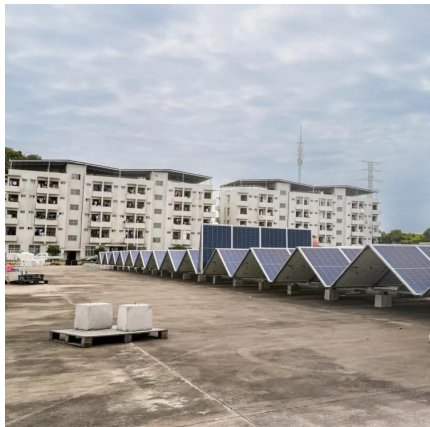
The different solar PV configurations, international/ national standards and grid codes for grid connected solar PV systems have been highlighted. The state-of-the-art features of multi-functional grid-connected solar PV inverters for increased penetration of solar PV power are examined.

What are grid-interactive solar PV inverters?

Grid-interactive solar PV inverters must satisfy the technical requirements of PV energy penetration posed by various country's rules and guidelines. Grid-connected PV systems enable consumers to contribute unused or excess electricity to the utility grid while using less power from the grid.



How many watts does the grid-connected solar inverter have



[How to connect a PV solar system to the ...](#)

You may have the option to replace the existing electrical panel with a new, larger box, or use the alternative Line Side Connection. For quick ...

[How to Calculate Inverter Capacity for Grid ...](#)

Sep 23, 2024 · The capacity of the inverter directly impacts the efficiency, performance, and safety of the system. This article will walk you through ...

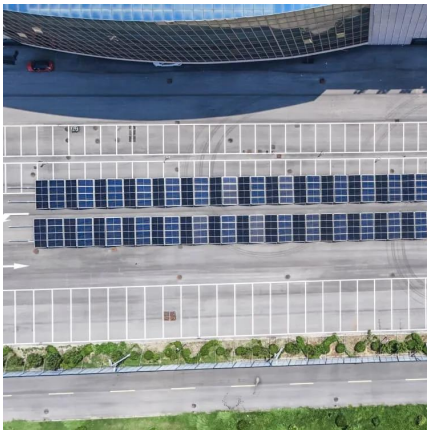


[4000W Single Phase Grid Tie Solar Inverter](#)

High-efficiency MPPT no isolated transformer type solar grid connected inverter with 4000 watt rated capacity, max power to 4200 watt. Wide DC input voltage range of 180-500 volts and ...

[How to Calculate Inverter Capacity for Grid-Tied Solar PV ...](#)

Sep 23, 2024 · The capacity of the inverter directly impacts the efficiency, performance, and safety of the system. This article will walk you through the technical aspects of calculating ...



[Section 3: Grid-connected solar explained , ...](#)

Section 3: Grid-connected solar explained Find out how your new solar electricity system will help your house interact with the electricity grid, ...

[The Only Inverter Size Chart You'll Ever Need](#)

How to Determine What Size Inverter I Need? What Are The Two Types of Power loads? Inverter Size Chart What Will A 300W Inverter Run? What Will A 500W Inverter Run? What Will A 700W Inverter Run? What Will A 1000W Inverter Run? What Will A 1500W Inverter Run? What Will A 2000W Inverter Run? What Will A 3000W Inverter Run? We have summarized the appliances that inverters from 300W to 3000W can run depending on their rated maximum power. Note to our readers: Use the above formulato determine how many appliances each inverter size can run simultaneously. See more on climatebiz inverter



4000W Single Phase Grid Tie Solar Inverter

High-efficiency MPPT no isolated transformer type solar grid connected inverter with 4000 watt rated capacity, max power to 4200 watt. Wide DC input voltage range of 180-500 volts and ...

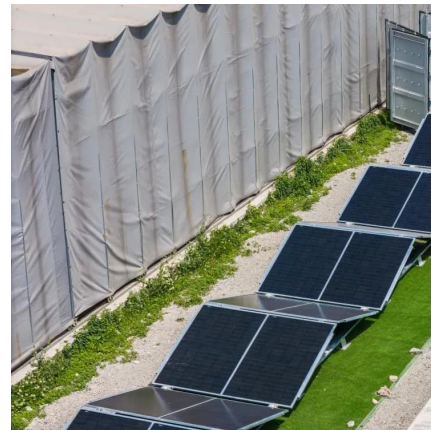


[The Only Inverter Size Chart You'll Ever Need](#)

Sep 25, 2023 · Solar generators range in size from small generators for short camping trips to large off-grid power systems for a boat or house. Consequently, inverter sizes vary greatly. ...

[How Much Power Does Solar Inverter Use and How to ...](#)

Aug 23, 2024 · Learn how much power a solar inverter uses and get practical tips on designing the ideal solar power project. From understanding inverter efficiency to system sizing, this ...

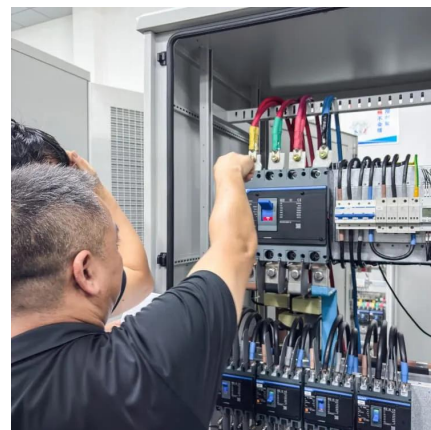


[Section 3: Grid-connected solar explained. solar.vic.gov](#)

Section 3: Grid-connected solar explained Find out how your new solar electricity system will help your house interact with the electricity grid, drawing electricity when needed and feeding any ...

[How to connect a PV solar system to the utility grid](#)

You may have the option to replace the existing electrical panel with a new, larger box, or use the alternative Line Side Connection. For quick reference, you can also view this table showing ...





[Solar Integration: Inverters and Grid Services Basics](#)

1 day ago · If you have a household solar system, your inverter probably performs several functions. In addition to converting your solar energy into AC power, it can monitor the system ...

[How big an inverter is needed for photovoltaic grid...](#)

Installers typically follow one of three common solar inverter sizing ratios: For our example 7 KW system, this translates to inverter sizes between 8,750 watts and 9,450 watts. While the above ...

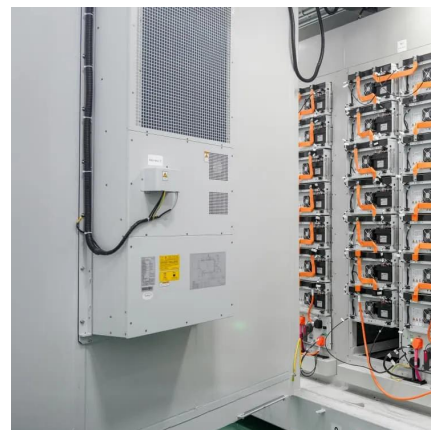


[Solar Integration: Inverters and Grid Services ...](#)

1 day ago · If you have a household solar system, your inverter probably performs several functions. In addition to converting your solar energy ...

[A comprehensive review of grid-connected solar ...](#)

Jun 1, 2023 · The different solar PV configurations, international/ national standards and grid codes for grid connected solar PV systems have been highlighted. The state-of-the-art ...





[Solar Inverter Specifications](#)

Sep 6, 2025 · The following specifications reflect Tesla Solar Inverter with Site Controller (Tesla P/N 1538000-45-y). For specifications on Tesla Solar Inverter without Site Controller, see ...

Contact Us

For technical specifications, project proposals, or partnership inquiries, please visit:
<https://bukhobuhle.co.za>

Scan QR Code for More Information



<https://bukhobuhle.co.za>