

How much area is needed for 10MW solar energy





Overview

How much land does a 100 MW solar power plant require?

A 100 MW thermal power plant for instance would require less than 10% of the total area that a 100 MW solar PV power plant would. Solar power plants require significantly larger land areas compared to conventional power plants.

What is a 10 MW solar power plant?

Imagine a vast area, typically the size of about 40 football fields, lined meticulously with rows of gleaming solar panels—this is what encompasses a 10 MW solar power plant. Such a facility is capable of producing enough electricity to power approximately 2,000 average homes, making it a significant contributor to local energy needs.

How much land does a solar PV power plant need?

However, owing to the fact that large ground mounted solar PV farms require space for other accessories, the total land required for a 1 MW of solar PV power plant will be about 4 acres. The above estimate is however for conventional solar PV power plants – those that are based on crystalline silicon and do not use trackers.

How do I install a 10 MW solar power plant?

The installation of a 10 MW solar power plant typically involves extensive planning and development. It starts with site selection, which is critical as the location directly influences the plant's efficiency and energy output.



How much area is needed for 10MW solar energy

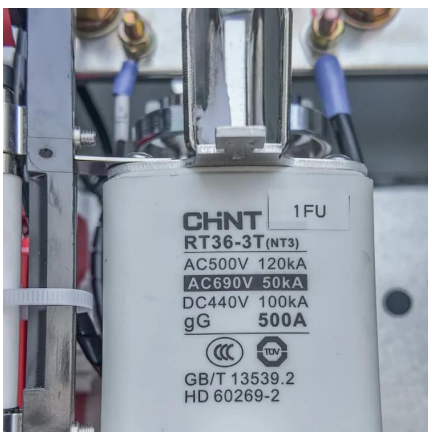


[10 MW Solar Power Plant Cost, Area & Setup ...](#)

Thinking of installing a 10 MW solar power plant? Synergy Solar, a leading installer, explains the cost, land needed, subsidy, ROI, and full setup ...

[Area Required for Solar PV Power Plants](#)

Oct 26, 2014 · You might have heard that solar power plants require significant amounts of land to generate power. How much area indeed is required for solar power plants? Investing in MW ...



[Total Area Required for Solar Panel Installation Calculator](#)

Oct 10, 2025 · Calculate the total area needed for your solar panel installation quickly and accurately with our easy-to-use solar panel area calculator.

[How Much Land Does A Solar Power Plant Need](#)

Oct 31, 2025 · The land area needed for solar power plants depends on the amount of kW of MW you want to accommodate. A general rule of thumb ...



[China 10MW Utility scale on Grid Solar Power System ...](#)

Dec 3, 2025 · Products 10MW Utility Scale On Grid Solar Power System Product Introduction: According to an average figure of 150 Watt per square meter, 10MW would need a panel area ...



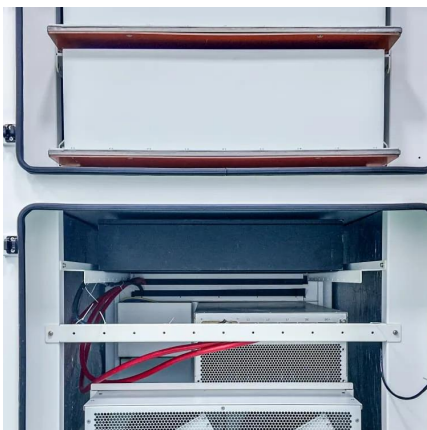
[How Much Land Is Required for a 10 MW Solar Power Plant?](#)

Aug 5, 2025 · You're planning a 10 MW solar project, but the single biggest unknown is the land. Quote the project with the wrong acreage, and your entire financial model could collapse ...



[How Much Land Does A Solar Power Plant Need](#)

Oct 31, 2025 · The land area needed for solar power plants depends on the amount of kW of MW you want to accommodate. A general rule of thumb is that each megawatt of solar energy ...





[Total Area Required for Solar Panel ...](#)

Oct 10, 2025 · Calculate the total area needed for your solar panel installation quickly and accurately with our easy-to-use solar panel area ...

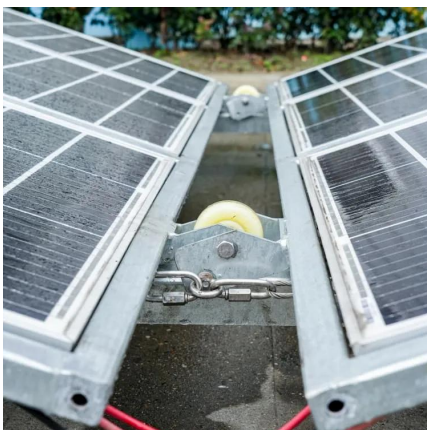


[How Much Area Is Required To Set Up A ...](#)

January 26, 2024Solar power, a leading renewable energy source, is pivotal in the global transition towards sustainability. Understanding the factors ...

[What Does a 10 MW Solar Power Plant Cost?](#)

May 16, 2024 · Overview of a 10 MW Solar Power Plant Imagine a vast area, typically the size of about 40 football fields, lined meticulously with rows of gleaming solar panels--this is what ...



[10 MW Solar Power Plant Cost, Area & Setup Guide](#)

Thinking of installing a 10 MW solar power plant? Synergy Solar, a leading installer, explains the cost, land needed, subsidy, ROI, and full setup process.



[10 MW Solar Farm: How Much Land Does It Need?](#)

Consequently, to establish a 5 MW solar power plant, one would need approximately 25 acres of available land. This sizeable area ensures that the photovoltaic panels can be optimally ...



[How Much Area Is Required To Set Up A Solar Power Plant?](#)

January 26, 2024Solar power, a leading renewable energy source, is pivotal in the global transition towards sustainability. Understanding the factors influencing the land area required ...

[China 10MW Utility scale on Grid Solar Power ...](#)

Dec 3, 2025 · Products 10MW Utility Scale On Grid Solar Power System Product Introduction: According to an average figure of 150 Watt per ...



[Solar Farm Area Calculator](#)

That's where a Solar Farm Area Calculator comes in. This powerful tool helps you determine exactly how much land you need for your solar project, ensuring efficiency and feasibility from ...



[What Does a 10 MW Solar Power Plant Cost?](#)

May 16, 2024 · Overview of a 10 MW Solar Power Plant Imagine a vast area, typically the size of about 40 football fields, lined ...



Contact Us

For technical specifications, project proposals, or partnership inquiries, please visit:
<https://bukhobuhle.co.za>

Scan QR Code for More Information



<https://bukhobuhle.co.za>