

# **How much power base station does the battery support**





## Overview

---

Why do cellular base stations have backup batteries?

Abstract: Cellular base stations (BSs) are equipped with backup batteries to obtain the uninterruptible power supply (UPS) and maintain the power supply reliability. While maintaining the reliability, the backup batteries of 5G BSs have some spare capacity over time due to the traffic-sensitive characteristic of 5G BS electricity load.

Which battery is best for telecom base station backup power?

Among various battery technologies, Lithium Iron Phosphate (LiFePO<sub>4</sub>) batteries stand out as the ideal choice for telecom base station backup power due to their high safety, long lifespan, and excellent thermal stability.

How much power does a base station have?

Maximum base station power is limited to 38 dBm output power for Medium-Range base stations, 24 dBm output power for Local Area base stations, and to 20 dBm for Home base stations. This power is defined per antenna and carrier, except for home base stations, where the power over all antennas (up to four) is counted.

How much power does a cellular base station use?

A cellular base station can use anywhere from 1 to 5 kW power per hour depending upon the number of transceivers attached to the base station, the age of cell towers, and energy needed for air conditioning. Cellular base stations use power without any interruption and also needs maintenance.



## How much power base station does the battery support

---



### [5G Power: Creating a green grid that slashes ...](#)

Jun 6, 2019 · Energy consumption per unit of data (watt/bit) is much less for 5G than 4G, but power consumption is much higher. In the 5G era, the ...

### [5G Base Station Lithium Battery: Capacity and Discharge ...](#)

Sep 26, 2025 · EverExceed's high-rate discharge LiFePO4 batteries are engineered to handle these demanding conditions, ensuring stable and efficient power delivery to 5G infrastructure. ...



### [How much energy storage battery is used in base stations?](#)

Aug 25, 2024 · The trajectory of energy storage technology showcases promising advancements that are likely to reshape how base stations harness power. With developments such as solid ...

### [HOW MUCH POWER DOES A 5G BASE STATION USE?](#)

How powerful is the battery energy storage system for the Democratic Republic of Congo s communication base station How does the Democratic Republic of the Congo support the ...



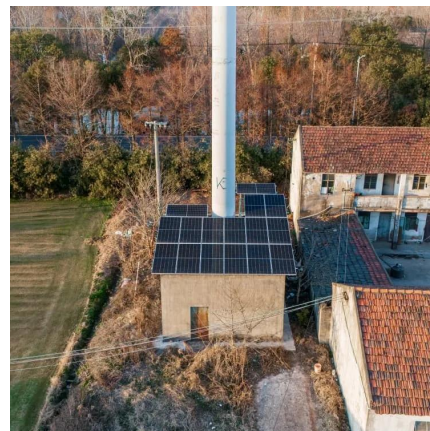
### [What Size Battery for Base Station? , Huijue Group E-Site](#)

The \$4.7 Billion Question Haunting Telecom Engineers When designing base station power systems, engineers face a critical dilemma: How do we balance battery capacity with ...



### [HOW DOES THE COST OF BATTERY ENERGY STORAGE ...](#)

How powerful is the battery energy storage system for the Democratic Republic of Congo s communication base station How does the Democratic Republic of the Congo support the ...



### [Energy Management of Base Station in 5G and B5G: Revisited](#)

Apr 19, 2024 · Since mmWave base stations (gNodeB) are typically capable of radiating up to 200-400 meters in urban locality. Therefore, high density of these stations is required for ...





### [Uninterrupted Power for 5G Base Stations: How the 51.2V ...](#)

Apr 14, 2025 · In this high-stakes landscape, the 51.2V 100Ah Server Rack Battery emerges as a transformative solution, engineered to deliver zero-downtime performance across the harshest ...

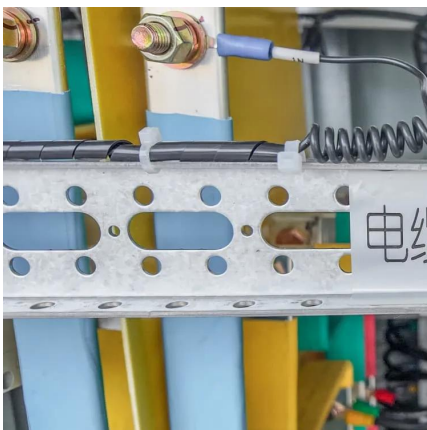


### [How to Determine the Right Battery Capacity ...](#)

Mar 10, 2025 · Example: If a base station consumes 500W and needs 4 hours of backup at 48V, the required capacity is:  
 $500W \times 4h / 48V = 41.67Ah$  ...

### [Texas' Only Energy Provider With Home ...](#)

2 days ago · Below-market electricity rates and home battery backup from Texas' modern energy provider. Reliable power made affordable.



### [How about base station energy storage batteries .NenPower](#)

Apr 7, 2024 · How about base station energy storage batteries 1. Base station energy storage batteries play a critical role in enhancing efficiency and reliability in telecommunication ...



## [Grid-Scale Battery Storage: Frequently Asked Questions](#)

Jul 11, 2023 · What is grid-scale battery storage?  
Battery storage is a technology that enables power system operators and utilities to store energy for later use. A battery energy storage ...



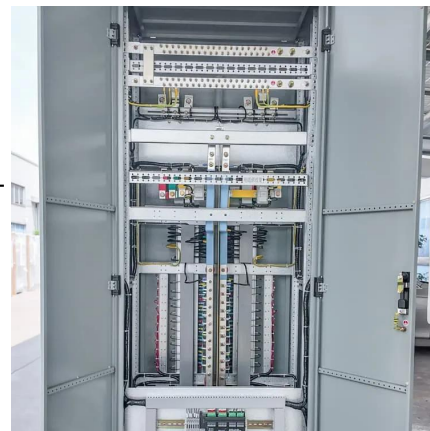
## [Telecom Base Station Backup Power Solution: Design Guide ...](#)

Jun 5, 2025 · Discover the 48V 100Ah LiFePO4 battery pack for telecom base stations: safe, long-lasting, and eco-friendly. Optimize reliability with our design guide.



## [Telecom Base Station Backup Power Solution: ...](#)

Jun 5, 2025 · Discover the 48V 100Ah LiFePO4 battery pack for telecom base stations: safe, long-lasting, and eco-friendly. Optimize reliability with ...



## [Evaluating the Dispatchable Capacity of Base Station Backup Batteries](#)

Apr 21, 2021 · Cellular base stations (BSs) are equipped with backup batteries to obtain the uninterruptible power supply (UPS) and maintain the power supply reliability. While ...





### [How to Determine the Right Battery Capacity for Telecom Base Stations](#)

Mar 10, 2025 · Example: If a base station consumes 500W and needs 4 hours of backup at 48V, the required capacity is:  
 $500W \times 4h / 48V = 41.67Ah$  Choosing a battery with a slightly higher ...

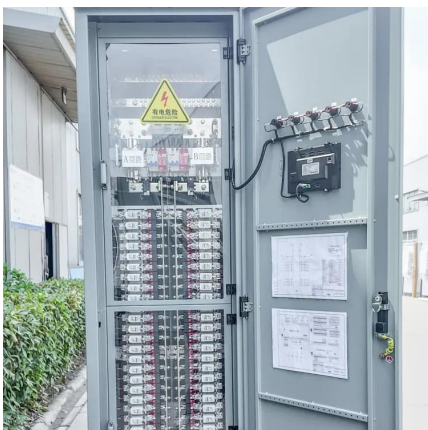


### [How to Select the Best ESTEL Battery Backup for Base Stations](#)

May 29, 2025 · Choose the best telecom battery backup systems by evaluating capacity, battery type, environmental adaptability, maintenance, and scalability for base stations.

### [Learn How Base Works , Base Power](#)

2 days ago · Learn how Base Power works with battery-backed energy plans, offering reliable power, automatic outage backup, and guaranteed low ...



### [Base Station Batteries in 5G: Higher Capacity and Resilience](#)

Dec 2, 2025 · Modern base station batteries are very important for the smooth rollout and running of 5G infrastructure around the world. They have features like higher energy efficiency, longer ...



### [How about base station energy storage ...](#)

Apr 7, 2024 · How about base station energy storage batteries 1. Base station energy storage batteries play a critical role in enhancing efficiency ...



### [How to Select the Best ESTEL Battery Backup for Base Stations](#)

May 29, 2025 · For instance, statistical comparisons of telecom battery backup systems reveal that lithium-ion batteries with capacities ranging from 10,000mAh to over 60,000mAh are ideal ...

## Contact Us

---

For technical specifications, project proposals, or partnership inquiries, please visit:  
<https://bukhobuhle.co.za>

**Scan QR Code for More Information**



<https://bukhobuhle.co.za>