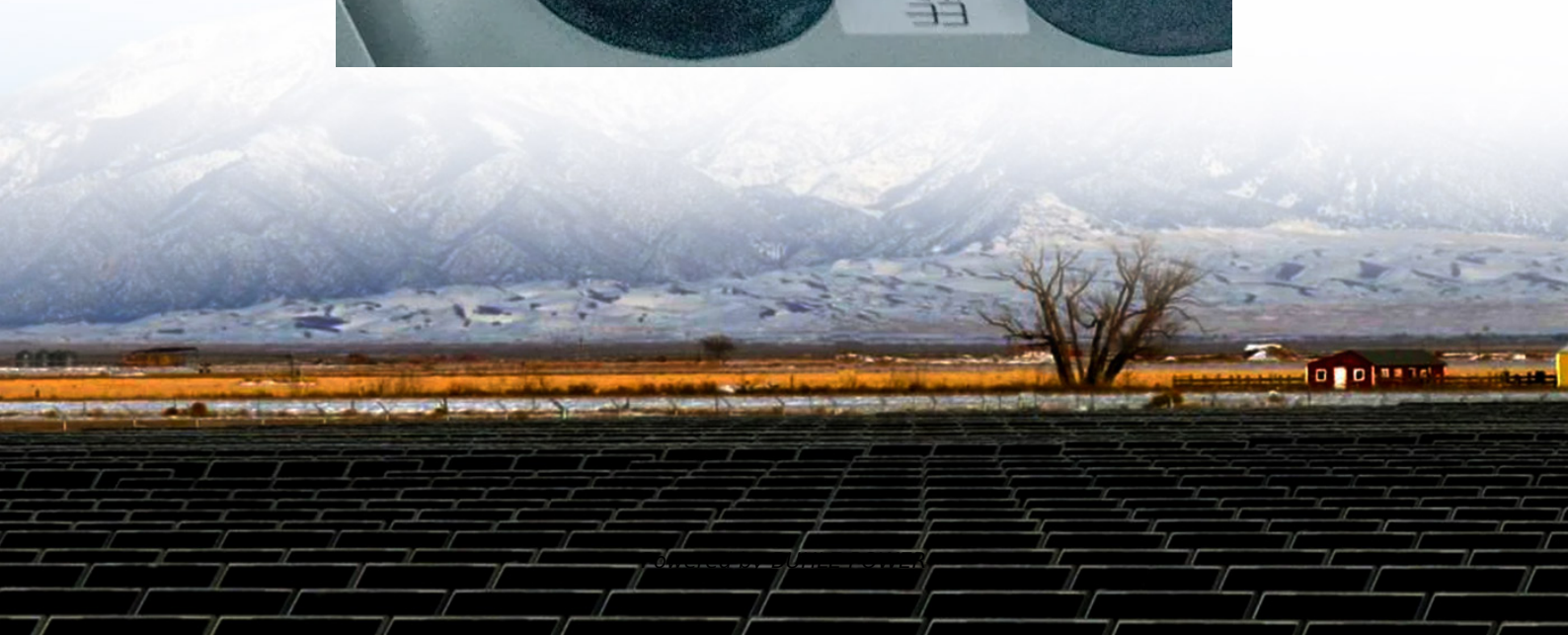


How much power does 5g base station in Micronesia consume





Overview

Are 5G base stations causing more energy consumption?

However, Li says 5G base stations are carrying five times the traffic as when equipped with only 4G, pushing up power consumption. The carrier is seeking subsidies from the Chinese government to help with the increased energy usage.

How much power does a 5G base station consume?

That's almost a threefold increase compared to 4G (5). One 5G base station is estimated to consume about as much power as 73 households (6), and 3x as much as the previous generation of base stations (5), (7).

Should power consumption models be used in 5G networks?

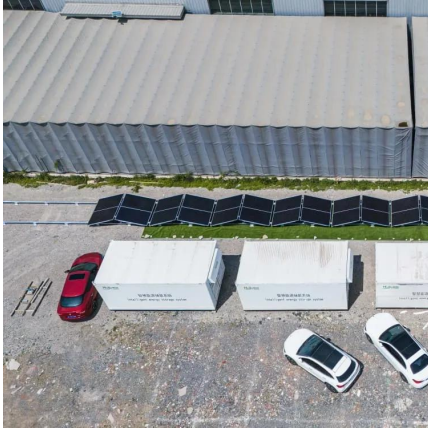
This restricts the potential use of the power models, as their validity and accuracy remain unclear. Future work includes the further development of the power consumption models to form a unified evaluation framework that enables the quantification and optimization of energy consumption and energy efficiency of 5G networks.

How much power will a 5G base station use in 2025?

The Small Cell Forum predicts the installed base of small cells to reach 70.2 million in 2025 and the total installed base of 5G or multimode small cells in 2025 to be 13.1 million. "A 5G base station is generally expected to consume roughly three times as much power as a 4G base station.



How much power does 5g base station in Micronesia consume

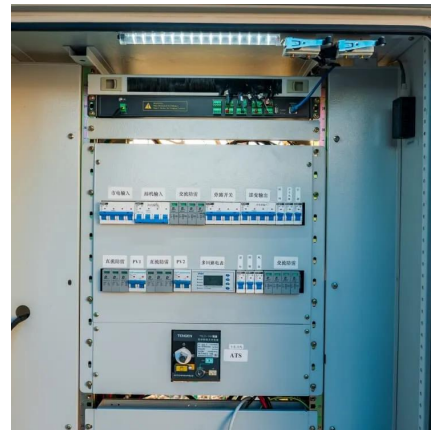


[What is 5G Energy Consumption?](#)

2 days ago · The 5G network is a dynamic system that consumes energy continually and responds to spikes in network activity. Over 70% of this energy is consumed by RAN ...

[Energy Consumption of 5G, Wireless Systems ...](#)

Reports on the Increasing Energy Consumption of Wireless Systems and Digital Ecosystem The more we use wireless electronic devices, the more ...



[What is the Power Consumption of a 5G Base Station?](#)

Nov 15, 2024 · Why is 5G Power Consumption Higher? 1. Increased Data Processing and Complexity These 5G base stations consume about three times the power of the 4G stations. ...



[Comparison of Power Consumption Models for 5G Cellular Network Base](#)

Jul 1, 2024 · This paper conducts a literature survey of relevant power consumption models for 5G cellular network base stations and provides a comparison of the models. It highlights ...



[Why does 5g base station consume so much power and how ...](#)

Apr 3, 2025 · The power consumption of the 5G base station mainly comes from the AU module processing and conversion and high power-consuming high radio frequency signals, the ...



[Energy Consumption of 5G, Wireless Systems and the Digital ...](#)

Reports on the Increasing Energy Consumption of Wireless Systems and Digital Ecosystem The more we use wireless electronic devices, the more energy we will consume. 5G will ...



[A technical look at 5G energy consumption and performance](#)

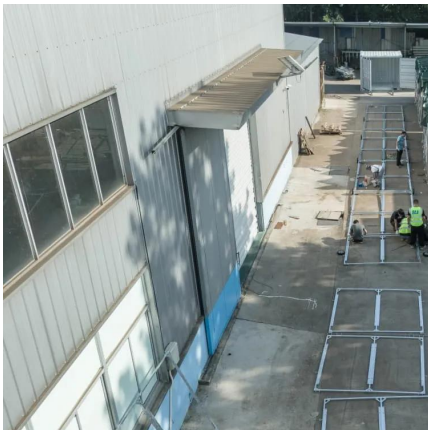
Sep 17, 2019 · How can 5G increase performance and ensure low energy consumption? Find out in our latest Research blog post.





Why does 5g base station consume so much ...

Apr 3, 2025 · The power consumption of the 5G base station mainly comes from the AU module processing and conversion and high power ...



Power consumption based on 5G communication

Oct 17, 2021 · This paper proposes a power control algorithm based on energy efficiency, which combines cell breathing technology and base station sleep technology to reduce base station ...

How Much Power Does 5G Base Station Consume? . Huijue ...

Aug 26, 2023 · The Silent Energy Crisis in Mobile Networks Have you ever wondered how much energy our hyper-connected world is consuming? 5G base stations, the backbone of next-gen ...



5G base stations use a lot more energy than ...

Apr 3, 2020 · A typical 5G base station consumes up to twice or more the power of a 4G base station, writes MTN Consulting Chief Analyst Matt ...



How much power does 5G consume?

One 5G base station is estimated to consume about as much power as 73 households (6), and 3x as much as the previous generation of base stations (5), (7). When base stations, data centers ...



5G base stations use a lot more energy than 4G base stations...

Apr 3, 2020 · A typical 5G base station consumes up to twice or more the power of a 4G base station, writes MTN Consulting Chief Analyst Matt Walker in a new report entitled " Operators ...

Contact Us

For technical specifications, project proposals, or partnership inquiries, please visit:
<https://bukhobuhle.co.za>

Scan QR Code for More Information



<https://bukhobuhle.co.za>