

# How much power inverter should be used for the weighbridge





## Overview

---

How do I choose the best electronic weighbridge?

To maximize the efficiency of electronic weighbridges: Choose the Right Type: Understand the specific needs of your operation. For example, pitless weighbridges are ideal for portability, while pit-type weighbridges are better for limited spaces. Employee Training: Train operators on proper usage to prevent errors and mishandling.

Who makes the best electronic weighbridges in India?

With a range of options, including pitless, mobile, and solar-powered weighbridges, the company ensures superior quality and innovative technology. Their service centers across the country make installation and maintenance hassle-free. Leotronic stands out as a leading manufacturer of electronic weighbridges in India.

What is an electronic weighbridge?

Electronic weighbridges are essential tools for industries requiring accurate weight measurements, such as logistics, construction, and manufacturing. Their precise performance, when paired with proper installation and maintenance, ensures optimal functionality and durability.

How do I choose a weighbridge?

However, weighbridges vary in function and features. When choosing your weighbridge, it's important to remember key weighing concepts such as capacity and division, ensuring the equipment meets your business's needs.

2. Choosing a weighbridge For every type of business, truck, cargo, and space, there's an ideal weighbridge model.



## How much power inverter should be used for the weighbridge



### [Is your inverter too big? Understanding the downsides of ...](#)

2 days ago · A larger inverter has a larger chassis, more switching components, more cooling hardware, and, in general, more internal electronics that must remain powered on whenever ...

### [Chapter 7 Weighbridges and their Operations and ...](#)

Aug 2, 2012 · 7.1.3 Approach and Methodology In order to adequately address the scope of work implied in addressing the various factors related to weighbridge operations and management ...



### [A Guide to Everything You Need to Know About Weighbridges](#)

Sep 11, 2024 · Are you in need of a new weighbridge? Or do you work with this type of weighing equipment daily? This guide from Anmar Scales summarizes everything you need to know to ...



### [Understanding Weighbridge Technology Specifications](#)

Mar 8, 2025 · A weighbridge, also known as a truck scale, is an essential tool for industries requiring accurate measurements of large vehicles and their cargo. Whether used in a logistics ...



### [A Guide to Everything You Need to Know ...](#)

Sep 11, 2024 · Are you in need of a new weighbridge? Or do you work with this type of weighing equipment daily? This guide from Anmar Scales ...



### [How to Choose the Right Weighbridge . Weightron Bilanciai](#)

Apr 11, 2023 · Note: If drivers of left-hand drive vehicles will use your weighbridge, additional terminals should be considered at the design stage. It is important to note that so-called ...



### [How to Choose the Right Weighbridge](#)

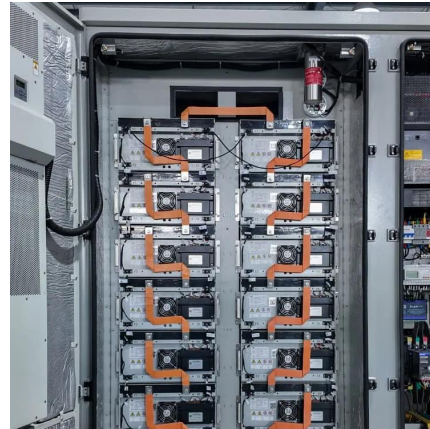
Apr 11, 2023 · Note: If drivers of left-hand drive vehicles will use your weighbridge, additional terminals should be considered at the design ...





### [Understanding Weighbridge Systems - What ...](#)

Power supply and connectivity If you're planning to link the weighbridge to digital systems or remote monitoring, you'll need reliable power and ...



### [Electronic Weighbridges: Installation, Maintenance, & Best ...](#)

Dec 24, 2024 · Why Choose Leotronic? Leotronic stands out as a leading manufacturer of electronic weighbridges in India. With a range of options, including pitless, mobile, and solar ...

### [Understanding Weighbridge Technology ...](#)

Mar 8, 2025 · A weighbridge, also known as a truck scale, is an essential tool for industries requiring accurate measurements of large vehicles and their ...



### [12 Factors to Consider Before Choosing a Weighbridge](#)

Jul 9, 2025 · Choosing the right weighbridge for your business can be a pivotal decision, impacting efficiency, accuracy, and operational costs. Whether you're weighing trucks for ...



### Weighbridge Installation Checklist for Accuracy & Compliance

Get your weighbridge ready for go-live with this step-by-step installation checklist. Ensure accuracy, compliance, and safe operations with Trakblaze.

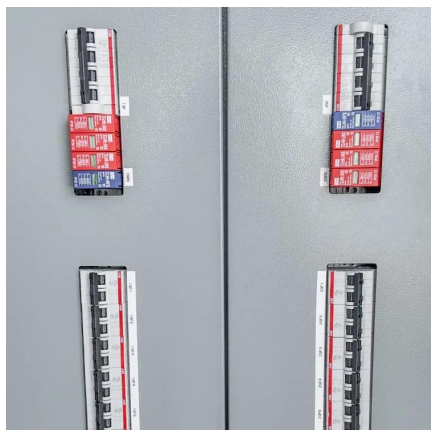


### Is your inverter too big? Understanding the ...

2 days ago · A larger inverter has a larger chassis, more switching components, more cooling hardware, and, in general, more internal ...

### Understanding Weighbridge Systems - What They Do, Why ...

Power supply and connectivity If you're planning to link the weighbridge to digital systems or remote monitoring, you'll need reliable power and network access. Environmental exposure Is ...



### 12 Factors to Consider Before Choosing a ...

Jul 9, 2025 · Choosing the right weighbridge for your business can be a pivotal decision, impacting efficiency, accuracy, and operational costs. ...



## Contact Us

---

For technical specifications, project proposals, or partnership inquiries, please visit:  
<https://bukhobuhle.co.za>

### Scan QR Code for More Information



<https://bukhobuhle.co.za>