

How to calculate the V value of the rectifier module in the base station power cabinet





Overview

What is a rectifier voltage calculator?

The Rectifier Voltage Calculator is a powerful and convenient tool for anyone working with rectifiers or AC to DC conversion systems. With just one input — the peak voltage — you can instantly get the average rectified output voltage, saving time and ensuring accuracy in your calculations.

What is a bridge rectifier output voltage calculator?

The process of ensuring that the output voltage remains stable and consistent. A type of diode commonly used in rectifiers, with a typical forward voltage drop of around 0.7V. Let's walk through an example to demonstrate how the Bridge Rectifier Output Voltage Calculator works. Scenario:.

What are the four modes of a rectifier?

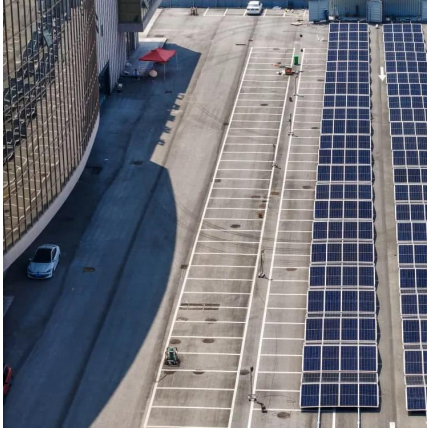
It offers four modes: calculating the DC output voltage (V_{DC}), the maximum current (I_M), the RMS current (I_{RMS}), or the ripple factor. Purpose: It is used in electronics to design bridge rectifier circuits for applications like power supplies, ensuring proper voltage, current, and ripple characteristics for components. 2.

How do I calculate rectifier capacity?

Calculating rectifier capacity involves understanding key factors like input voltage, output current, efficiency, and load requirements. I always ensure to include safety margins and adjust for real-world conditions like temperature and aging components.



How to calculate the V value of the rectifier module in the base stat



[Bridge Rectifier Calculator](#)

1. What is Bridge Rectifier Calculator? Definition: This calculator computes key parameters of a bridge rectifier circuit, which converts AC voltage to DC voltage. It offers four modes: ...

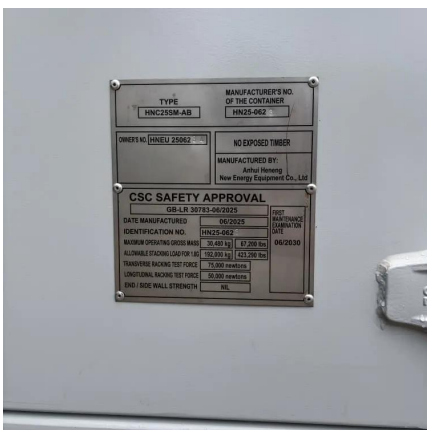
[How to calculate the capacity of my power ...](#)

May 15, 2025 · Learn how to calculate capacity for your power rectifier system by analyzing input voltage, output current, efficiency, and load ...



[How to calculate the capacity of my power rectifier system](#)

May 15, 2025 · Learn how to calculate capacity for your power rectifier system by analyzing input voltage, output current, efficiency, and load requirements with safety margins.



[Half-Wave and Full-Wave Rectifier Circuits: A Complete Guide](#)

Sep 11, 2017 · To calculate the ripple factor of a half wave and full wave rectifier, just substitute the RMS and Average value of the respective rectifier in the above equation.



[Bridge Rectifier Output Voltage Calculator](#)

Sep 19, 2024 · The calculator simplifies the process by taking into account the input AC voltage, the RMS (root mean square) value, and the voltage ...



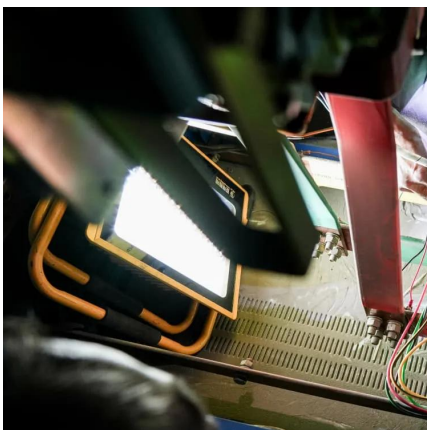
[Bridge Rectifier Output Voltage Calculator](#)

Sep 19, 2024 · The calculator simplifies the process by taking into account the input AC voltage, the RMS (root mean square) value, and the voltage drop across the diodes. Knowing the ...



[Half-Wave and Full-Wave Rectifier Circuits: A ...](#)

Sep 11, 2017 · To calculate the ripple factor of a half wave and full wave rectifier, just substitute the RMS and Average value of the respective ...





[Full Wave Rectifier all Formulas with Derivation](#)

Dec 5, 2025 · Full Wave Rectifier all Formulas with Derivations and Equations, Average Value, RMS Value, Ripple Factor, Form Factor, Fourier Series, Efficiency etc.



[Rectifier Voltage Calculator](#)

To streamline the calculation process, we present the Rectifier Voltage Calculator, an intuitive tool that computes the average rectified voltage based on the peak voltage of an AC input. ...

[Rectifier Voltage Calculator & Formula Online Calculator Ultra](#)

Oct 3, 2024 · The rectifier voltage calculation is pivotal in designing and analyzing power supplies, especially in applications where precise voltage control is required. This includes battery ...



[Rectifier Design and Analysis](#)

Jan 2, 2025 · Rectifier Design and Analysis This document describes the operation and design of AC line operated rectifier circuits. Both theory of operation and detailed design procedures are ...



[Bridge Rectifier Output Voltage Calculator](#)

Sep 11, 2025 · The bridge rectifier is preferred over other types of rectifiers due to its ability to provide full-wave rectification and higher output voltage. How to Calculate Bridge Rectifier ...



[Bridge Rectifier Output Voltage Calculator](#)

Sep 11, 2025 · The bridge rectifier is preferred over other types of rectifiers due to its ability to provide full-wave rectification and higher output voltage ...

[Rectification Dynamics Calculator , True Geometry's Blog](#)

May 1, 2025 · Explanation Full-Wave Rectifier Analysis: This calculator helps determine the performance of a full-wave rectifier circuit. It calculates the peak output voltage, ripple voltage, ...



Contact Us

For technical specifications, project proposals, or partnership inquiries, please visit:
<https://bukhobuhle.co.za>



Scan QR Code for More Information



<https://bukhobuhle.co.za>