

How to connect to an outdoor base station





Overview

How do I set up a base station?

Set up the base station using either the tripod or T-bar mounting method. You must use an external radio antenna kit for the internal 450 MHz or 900 MHz radio. To avoid interference between the 900 MHz radio and GPRS transmissions, do not mount the external radio antenna within 1 m (3.3 ft) of the GSM antenna.

How do I set up a Wyze base station?

In the Wyze app, tap on your Wyze Base Station. Tap on the Settings gear on the top right. Tap Device Info > Wi-Fi Network. Follow the on-screen steps to finish the setup. Now that your Wyze Base Station is all set up, it's time to add your Wyze Cam Outdoor. Move on to the next article, Wyze Cam Outdoor Setup Guide.

What is the TP-Link outdoor wireless base station?

The TP-LINK Outdoor Wireless Base Station pairs professional performance with user-friendly design, making it the perfect solution for both business and home users. Two external RP-SMA antenna interfaces allow the Outdoor Wireless Base Station to integrate seamlessly with TP-LINK's line of sector and dish antennas.

How do I connect my Arlo camera to the base station?

To connect your Arlo camera to the base station, you will need the following: If you haven't already, download the Arlo app from the App Store (iOS) or Google Play Store (Android). The app is essential for connecting your camera and accessing its features. Now that you are prepared, let's proceed with the actual connection process.



How to connect to an outdoor base station

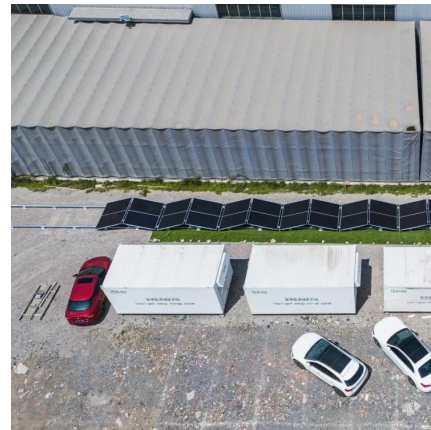


[Can I set up the Wyze Base Station without a router? - Wyze](#)

Aug 4, 2022 · Unlike other Wyze devices, the Wyze Base Station requires a wired connection to your router during setup. You will not be able to set up the Base Station without a router.

[Common ways to set up a base station](#)

Dec 1, 2025 · Select a control point for the Base Position (the control point name will be used as the base station name) or select unknown position and enter the Base name. Select the Radio ...



[How to Set up Wyze Outdoor Camera ...](#)

Dec 29, 2023 · Yes, it is possible to set up the Wyze outdoor camera without a base station using Wyze Cam Outdoor WiFi Bundle or the Wyze Cam ...

[Wyze Base Station Setup Guide](#)

Jul 10, 2025 · Wyze Base Station is the communication hub for your Wyze Cam Outdoor and it is necessary for it to talk to your network. New to Wyze? Before starting, download the Wyze app ...



[Xiaomi Outdoor Camera Base Station FAQ](#)

1. Q: What cameras does the Xiaomi Outdoor Camera Base Station support? A: The current models that are supported are listed below:
Xiaomi Outdoor Camera BW500 Xiaomi Outdoor
...



[How to Connect Wyze Base Station to Wifi](#)

Oct 18, 2022 · Today we'll discuss how to connect wyze base station to wifi. This is a very important process, as it allows you to access your camera ...



[Outdoor Camera Base Station User Manual](#)

Sep 18, 2024 · Turning on: Connect the charging cable and a power adapter with an output of 5 V = 2 A, and then the base station will automatically turn on when the power is switched on.





[Wyze Base Station Setup](#)

Oct 12, 2023 · To connect your Wyze Cam Outdoor to the Wyze Base Station, start by downloading the Wyze app and connecting to Wi-Fi. Next, connect your mobile device to the ...



[Wyze Base Station Not Connecting: How to Fix!](#)

Wyze Base Stations are an essential part of the Wyze ecosystem, allowing users to connect their Wyze Cam Outdoor devices and provide a reliable ...

[Is Wyze Base Station wired or wireless?](#)

Aug 4, 2022 · Wyze Base Station can be used both wirelessly, and wired via an Ethernet cable. To use your base station with a wired connection: Use an Ethernet cable to connect to your ...



[Connect Essential Outdoor Cam to Base Station \(not WiFi\)](#)

Mar 16, 2024 · I have an Arlo base station (5000r6) and several Ultra cameras attached to it. I am trying to connect an Essential Outdoor camera (2nd gen) but the app only gives me the option ...



[Common ways to set up a base station](#)

Dec 1, 2025 · Select a control point for the Base Position (the control point name will be used as the base station name) or select unknown position ...



[How to use Wyze Outdoor Cam without a Base Station?](#)

Mar 7, 2022 · Also, you can have 4 outdoor cams per base station. So, if you do buy a base/cam bundle, you can still use the one you have now, assuming it's not registered to another base ...

[Base station Installation Instructions](#)

Feb 20, 2025 · Keep the base station away from 802.11g Wi-Fi devices, 2.4 GHz peripherals, Bluetooth devices, cordless phones, transformers, motors, flu-orescent lamps, microwaves, ...



[Wyze Base Station Setup Guide](#)

Jul 10, 2025 · Wyze Base Station is the communication hub for your Wyze Cam Outdoor and it is necessary for it to talk to your network. New to ...



[Connecting Your Arlo Camera to the Base Station: A ...](#)

Jun 14, 2025 · Understanding Arlo Cameras And Base Stations Before delving into the setup process, it's crucial to gain a clear understanding of what an Arlo camera and base station are ...



[How to set up the Arlo Essential Outdoor Camera \(2nd ...](#)

Jul 18, 2025 · How do I connect my mobile device to a 2.4 GHz Wi-Fi network to set up my Arlo camera? How do I connect my Arlo Camera or Video Doorbell to an Arlo SmartHub or Base ...



[Pairing a Base Station: A Comprehensive Guide to Seamless ...](#)

Apr 2, 2025 · In today's interconnected world, base stations play a vital role in providing reliable and efficient communication networks. Whether you're setting up a home security system, a ...



[How to set up the Arlo Essential Outdoor ...](#)

Jul 18, 2025 · How do I connect my mobile device to a 2.4 GHz Wi-Fi network to set up my Arlo camera? How do I connect my Arlo Camera or ...





[5GHz 300Mbps Outdoor Wireless Base Station](#)

May 10, 2020 · Long-Distance Wireless Data Transmission Two external RP-SMA antenna interfaces allow the Outdoor Wireless Base Station to integrate seamlessly with TP-LINK's line ...



[Understanding Wyze Outdoor Camera: Do You Need a Base Station?](#)

Nov 23, 2024 · However, many potential users wonder whether they need a base station to use this innovative device effectively. This article delves deep into the Wyze Outdoor Camera's ...

[5GHz 300Mbps Outdoor Wireless Base ...](#)

May 10, 2020 · Long-Distance Wireless Data Transmission Two external RP-SMA antenna interfaces allow the Outdoor Wireless Base Station to ...



Contact Us

For technical specifications, project proposals, or partnership inquiries, please visit:
<https://bukhobuhle.co.za>



Scan QR Code for More Information



<https://bukhobuhle.co.za>