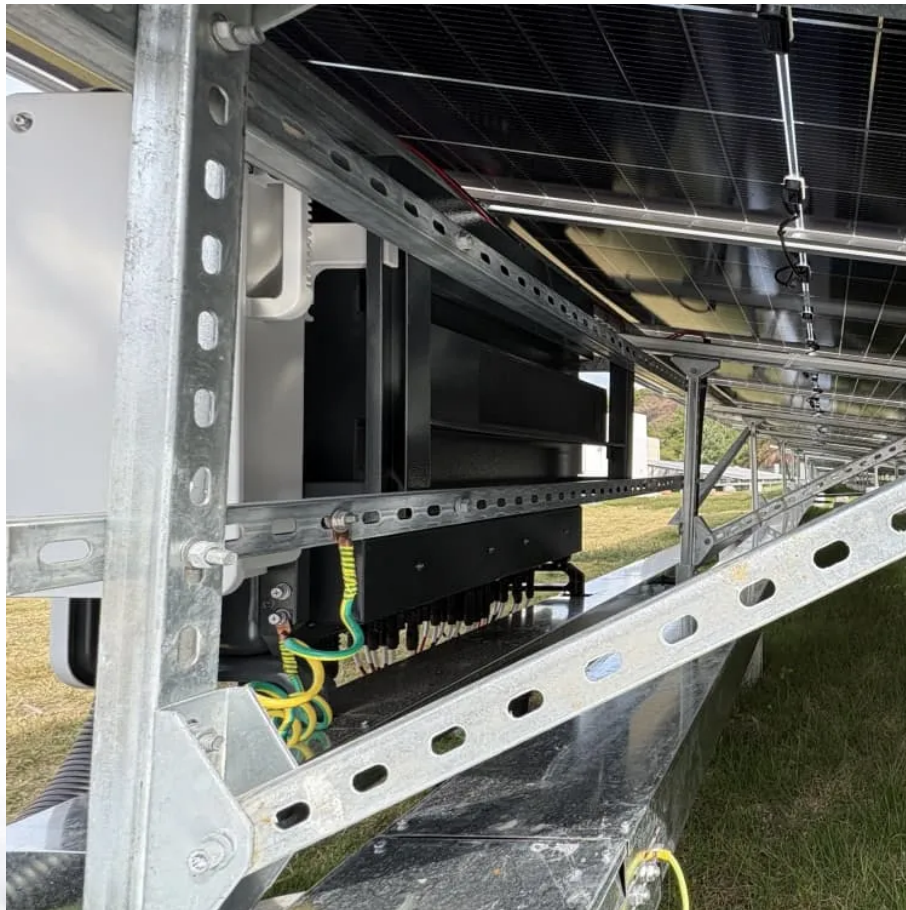


How to identify base station operator communication equipment





Overview

What is a mobile base station?

A mobile base station, also called a base transceiver station (BTS), is a fixed radio transceiver in any mobile communication network or wide area network (WAN). The base station connects mobile devices to the network and routes them to other terminals in the network or to the core network of a mobile operator. [Read more Explore Mobile base.](#)

What are the components of a base station?

The base station will have one or more RF antennas installed to transmit and receive RF signals from other devices. The block diagram of a base station typically includes the following key components: Baseband Processor: The baseband processor too deals with different communication protocols and interfaces with mobile network infrastructure.

What is a base station?

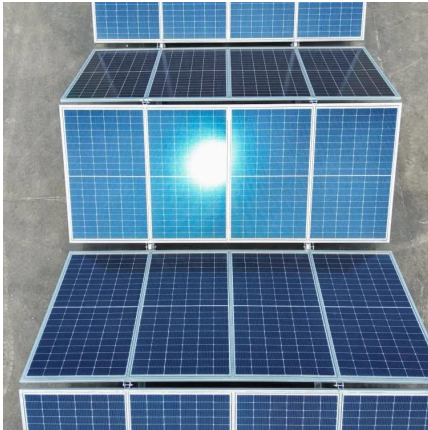
Network Coverage: Base stations cover a given part of the earth. Various base stations are set up in such a way that forms a network to encompass all areas of the city, region or even an entire country.

Why are base stations important in cellular communication?

Base stations are important in the cellular communication as it facilitate seamless communication between mobile devices and the network communication. The demand for efficient data transmission are increased as we are advancing towards new technologies such as 5G and other data intensive applications.



How to identify base station operator communication equipment



[3GPP base station conformance testing](#)

Base station (BS) performance is vital for delivering expected quality of experience to end users. To ensure this, it is important that the base station conformance criteria is met and that they ...

[Breaking Down Base Stations - A Guide to Cellular Sites](#)

May 31, 2022 · Communications Equipment The primary function of a tower is to transmit the data that makes up our communications networks. In order to accomplish this, the site uses several ...

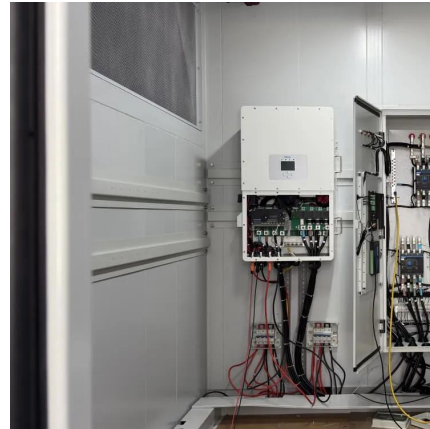


Base Stations

Jul 23, 2025 · The present-day tele-space is incomplete without the base stations as these constitute an important part of the modern-day scheme of wireless communications. They are ...

[Base Station Equipment - SolveForce Fiber Internet, Cloud ...](#)

Sep 3, 2023 · Base station equipment, also known as cell site equipment, is a crucial component of cellular networks and wireless communication systems. It plays a central role in facilitating ...



[Explain the concept of Base Station Identity ...](#)

Nov 10, 2023 · The Base Station Identity Code (BSIC) is a parameter used in GSM (Global System for Mobile Communications) networks to uniquely ...



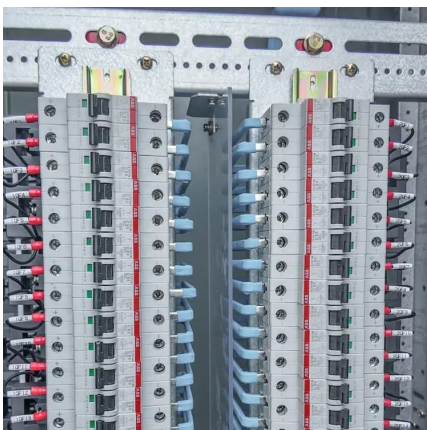
[Base station operation guidelines](#)

Dec 1, 2025 · Base station operation guidelines
This topic introduces the concept of base station operation, provides information to help you identify good setup locations, describes best ...



[Base Station Testing: A Comprehensive Guide](#)

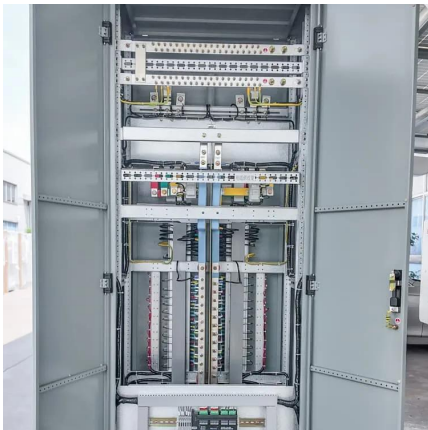
Jun 20, 2023 · What is Base Station Testing? In wireless communication networks, base stations or cell towers are evaluated and assessed for their functionality, performance, and ...





Breaking Down Base Stations - A Guide to ...

May 31, 2022 · Communications Equipment The primary function of a tower is to transmit the data that makes up our communications networks. In ...



Base station testing

Jan 7, 2025 · Traditionally base stations have been verified by measuring their performance conductively at the antenna interface. With 5G, we enter a new and exciting era for base ...



Mobile base station , Application

A mobile base station, also called a base transceiver station (BTS), is a fixed radio transceiver in any mobile communication network or wide area network (WAN). The base station connects ...



Operator s communication equipment in base station

Oct 29, 2025 · A Base Transceiver Station (BTS) is a critical piece of equipment in a mobile network, responsible for handling communication between mobile devices and the network. ...



3GPP base station conformance testing

Base station (BS) performance is vital for delivering expected quality of experience to end users. To ensure this, it is important that the base ...



Explain the concept of Base Station Identity Code (BSIC).

Nov 10, 2023 · The Base Station Identity Code (BSIC) is a parameter used in GSM (Global System for Mobile Communications) networks to uniquely identify individual cells within a ...

Contact Us

For technical specifications, project proposals, or partnership inquiries, please visit:
<https://bukhobuhle.co.za>

Scan QR Code for More Information



<https://bukhobuhle.co.za>