

How to measure the signal strength of outdoor base stations





Overview

How to determine signal strength vs distance for LTE base stations?

How to determine signal strength verses distance for LTE base stations?

All mobile phones have bars or some other type of indicator displaying signal strength. As mobile devices move away from the base station the signal strength becomes weak and at some point becomes out of range or establishes connections with a different tower.

What are the disadvantages of a base station?

Base Station capacity - High network congestion due to excessive mobile users. Proximity to the base station - The farther away you are, the weaker the signal reception. Competing Signals - Interference from other networks or nearby electronic devices can weaken connectivity.

Why is signal strength important?

Signal strength is the heartbeat of every wireless communication system. Whether you're deploying a 5G private network, broadcasting digital TV, or setting up a long-range IoT link, the stability and adequacy of your signal directly determine whether your project delivers or fails.

What is signal strength?

1. Understanding Signal Strength: Units and Metrics Signal strength refers to the received power at a receiver's antenna terminal. A higher (less negative) dBm value indicates a stronger signal, but it does not tell the whole story—quality matters too.



How to measure the signal strength of outdoor base stations



[How to Measure Cell Phone Signal Strength of Mobile ...](#)

Sep 2, 2025 · Cellular signal bars are not an accurate measurement of the strength of the signal your cell phone is receiving. While they do indicate something about the quality of your ...

[Base Station Testing: A Comprehensive Guide](#)

Jun 20, 2023 · Signal Strength and Coverage: Measuring the base station's signal strength and coverage area is one of the main goals of base station testing. To guarantee uniform coverage ...



[How to Use a Signal Meter: Tips for Accurate ...](#)

Nov 24, 2023 · Used to measure signal strength throughout the building to determine dead zones or areas with inadequate cellular coverage. Used ...

[Signal Strength in Telecommunications: Definitions, ...](#)

Aug 15, 2025 · Introduction Signal strength is the heartbeat of every wireless communication system. Whether you're deploying a 5G private network, broadcasting digital TV, or setting up ...



[How to Measure Cell Phone Signal Strength ...](#)

Sep 2, 2025 · Cellular signal bars are not an accurate measurement of the strength of the signal your cell phone is receiving. While they do indicate ...



[How to measure the signal strength of a TETRA Base Station?](#)

Importance of Regular Signal Strength Measurements Regular signal strength measurements are essential for maintaining the performance and reliability of a TETRA network. By monitoring ...



[How to Use a Signal Meter: Tips for Accurate RF Measurements](#)

Nov 24, 2023 · Used to measure signal strength throughout the building to determine dead zones or areas with inadequate cellular coverage. Used to determine available cell signal sources. ...





Measurement of Electromagnetic Signal Strengths of ...

Apr 30, 2013 · In this paper, signal strength of base stations (900 MHz) in a pilot region were measured and recorded. The selected region was averagely 500,000 m2 and has 4 base ...

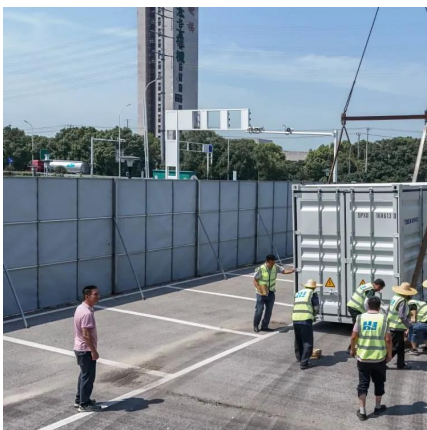


Cellular Network Signal Strength Analyser

Apr 25, 2025 · The implementation of a real-time signal strength monitoring system allows network administrators to pinpoint weak signal areas, optimize base station placements, ...

How to determine signal strength verses ...

Nov 11, 2025 · Question: For a LTE base station is it possible to determine the relationship between the signal strength and distance? Assumption: ...



Measured signal strength around base station ...

Download scientific diagram , Measured signal strength around base station from publication: Prediction of Wireless Network Signal Strength within a ...



How to determine signal strength verses distance for LTE base stations?

Nov 11, 2025 · Question: For a LTE base station is it possible to determine the relationship between the signal strength and distance?
Assumption: LTE base station is located in a plain
...



[Understanding Cellular Signal Strength and Quality](#)

What Affects Signal Strength and Quality Base Station capacity - High network congestion due to excessive mobile users. Proximity to the base station - The farther away you are, the weaker ...

[Measured signal strength around base station](#)

Download scientific diagram , Measured signal strength around base station from publication: Prediction of Wireless Network Signal Strength within a Building , With the increase in the ...



Contact Us

For technical specifications, project proposals, or partnership inquiries, please visit:
<https://bukhobuhle.co.za>



Scan QR Code for More Information



<https://bukhobuhle.co.za>