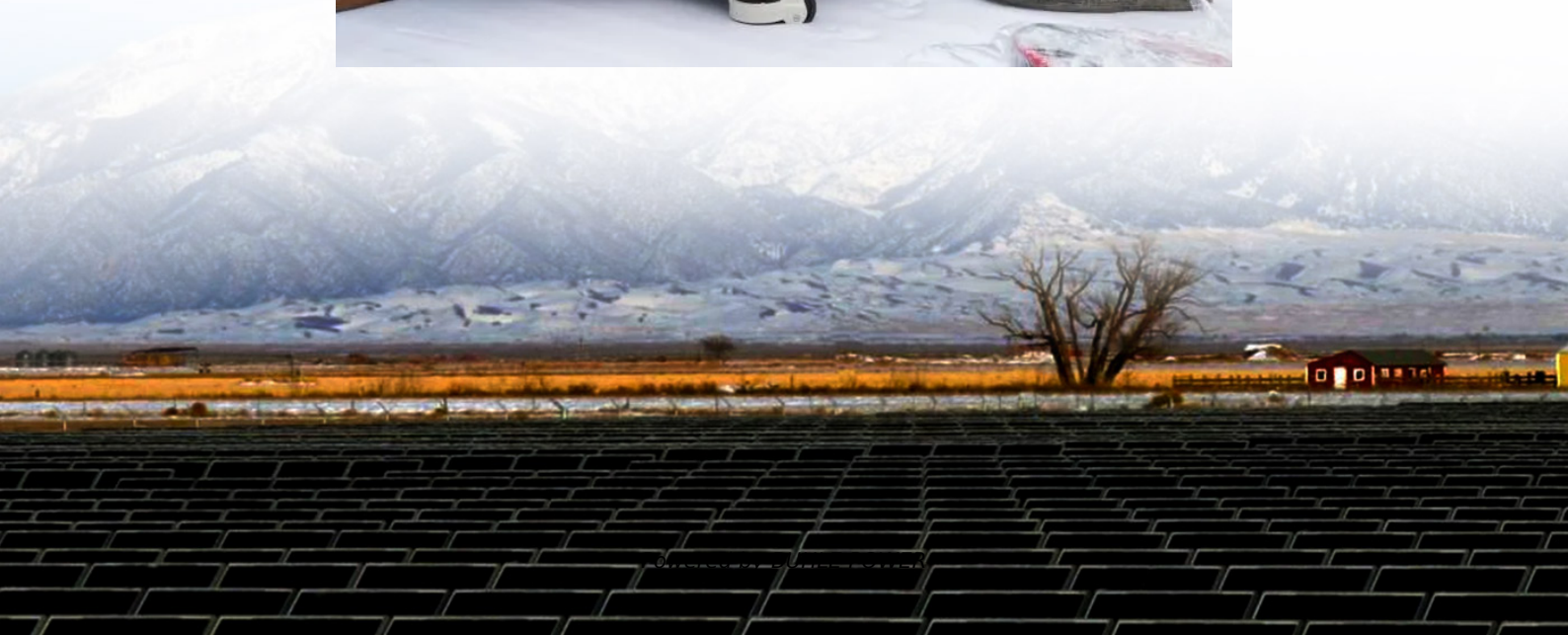


How to turn off the power of the base station signal tower





Overview

How much power does a base station have?

Maximum base station power is limited to 38 dBm output power for Medium-Range base stations, 24 dBm output power for Local Area base stations, and to 20 dBm for Home base stations. This power is defined per antenna and carrier, except for home base stations, where the power over all antennas (up to four) is counted.

What is base station Power?

Base station power refers to the output power level of base stations, which is defined by specific maximum limits (24 dBm for Local Area base stations and 20 dBm for Home base stations) and includes tolerances for deviation from declared power levels, as well as specifications for total power control dynamic range. How useful is this definition?

.

What is the maximum base station Power?

Maximum base station power is limited to 24 dBm output power for Local Area base stations and to 20 dBm for Home base stations, counting the power over all antennas (up to four). There is no maximum base station power defined for Wide Area base stations.

How does a base station work?

Depending on the size of base station and its traffic, the base station may also have another sources of power such as a diesel generator, wind turbine or biofuels. The base station is a transceiver and acts as an interface between a mobile station and network using microwave radio communication.



How to turn off the power of the base station signal tower



Application Note: Distributed Base Stations

ed in close proximity to the antenna tower. This BTS connects to both the Mobile Switching Center (MSC), which directs hand-off between towers for mobile users, and the Radio ...

FSW_Test_ac_en_5214-4842-92_v0200 dd

Dec 11, 2023 · To avoid shutdown of the base station, it might be necessary to add an isolator and an external attenuator to absorb the reflected wave. Such a test setup is in accordance ...



E-UTRA Base Station Transmit ON/OFF Power ...

To overcome this test challenge, two innovative techniques are used in the Keysight N9082A measurement application: a two-sweep method and a ...

TELECOM SITES POWER CONTROL & MANAGEMENT

Feb 16, 2024 · The purpose is to preserve site battery/backup generator fuel to extend site life, or to turn off equipment before complete site battery failure occurs, which will prevent damage to ...



Power Base Station

Maximum base station power is limited to 38 dBm output power for Medium-Range base stations, 24 dBm output power for Local Area base stations, and to 20 dBm for Home base stations.



What is Uplink Power Control in 5G and 4G?

Feb 12, 2025 · Uplink Power Control is the process of dynamically adjusting your phone's transmit power when sending signals to the tower (base ...



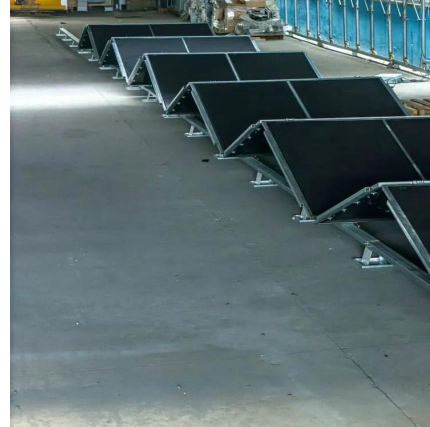
Base Stations

Jul 23, 2025 · Control Unit: The controller is in charge of the operation of the whole base station. It controls the transmission power, frequency allocation, handovers between different cells and ...



E-UTRA Base Station Transmit ON/OFF Power Measurement

To overcome this test challenge, two innovative techniques are used in the Keysight N9082A measurement application: a two-sweep method and a noise correction (NC)/noise floor ...

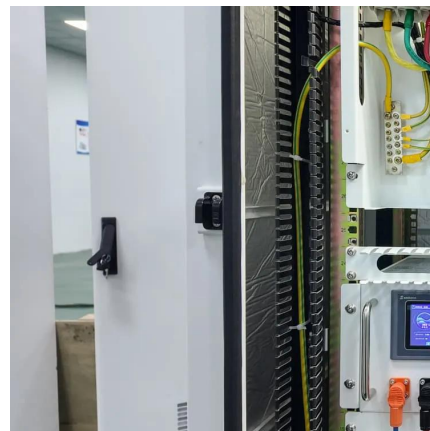


LTE TDD Base Station Transmit On/Off Power ...

Apr 26, 2016 · To prevent this problem, section 6.4 of the 3GPP TS36.141 standard defines the transmit On/Off power with the intention of securing base signal station quality. This standard ...

What is Uplink Power Control in 5G and 4G?

Feb 12, 2025 · Uplink Power Control is the process of dynamically adjusting your phone's transmit power when sending signals to the tower (base station). Think of it like adjusting your voice in ...



power electronics

Aug 18, 2020 · I've believed this since 1994 - that if you really want to turn off a cell phone, you need to take the battery out. But why? What is a good technical reason to keep spending ...



Base Station ON-OFF Switching in 5G Wireless Networks: ...

Jan 22, 2023 · In existing cellular networks, turning off the under-utilized BSs is an efficient approach to conserve energy while preserving the quality of service (QoS) of mobile users.



Contact Us

For technical specifications, project proposals, or partnership inquiries, please visit:
<https://bukhobuhle.co.za>

Scan QR Code for More Information



<https://bukhobuhle.co.za>