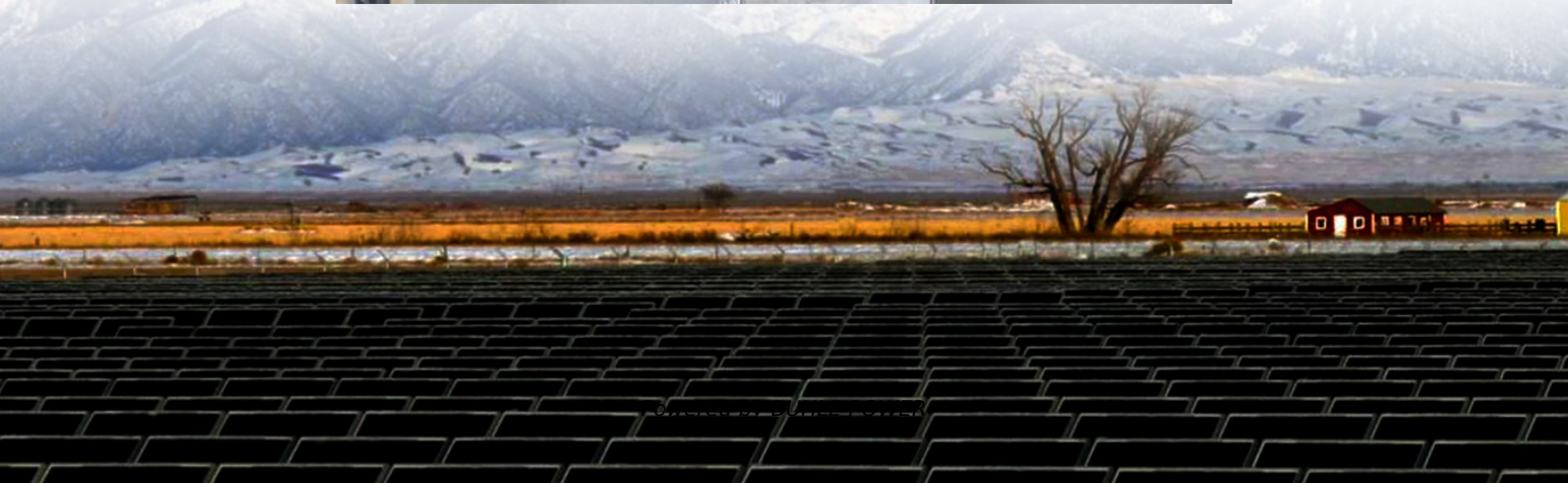


How to use the dedicated battery for mobile base station equipment





Overview

Which battery is best for telecom base station backup power?

Among various battery technologies, Lithium Iron Phosphate (LiFePO₄) batteries stand out as the ideal choice for telecom base station backup power due to their high safety, long lifespan, and excellent thermal stability.

What makes a telecom battery pack compatible with a base station?

Compatibility and Installation Voltage Compatibility: 48V is the standard voltage for telecom base stations, so the battery pack's output voltage must align with base station equipment requirements. Modular Design: A modular structure simplifies installation, maintenance, and scalability.

How do I choose a base station?

Key Factors: Power Consumption: Determine the base station's load (in watts). Backup Duration: Identify the required backup time (hours). Battery Voltage: Select the correct voltage based on system design. Efficiency & Discharge Rate: Consider battery efficiency and discharge characteristics.

Should telecommunication operators invest in a telecom battery backup system?

Investing in a telecom battery backup system is always one of the priorities for telecommunication operators in the 5G era. Sunwoda 48V telecom batteries have a capacity covering 50Ah-150Ah, which can easily meet the power backup needs of macro and micro base stations.



How to use the dedicated battery for mobile base station equipment



[Telecom Battery Backup System . Sunwoda Energy](#)

A telecom battery backup system is a comprehensive portfolio of energy storage batteries used as backup power for base stations to ensure a reliable and stable power supply.



[Telecommunication Battery](#)

Aug 8, 2025 · Telecommunication battery (telecom battery), also known as telecom backup battery or telecom battery bank, primarily refer to the backup power systems used in base ...

[What is the purpose of batteries at telecom ...](#)

Nov 7, 2025 · Introduction Telecom base stations are the backbone of modern communication networks, enabling seamless connectivity for ...



[Telecommunication Battery](#)

Aug 8, 2025 · Telecommunication battery (telecom battery), also known as telecom backup battery or telecom battery bank, primarily refer to the ...



[Battery For Base Stations Of Mobile Operators in the Real](#)

Oct 11, 2025 · As mobile networks expand and evolve, the reliance on reliable power sources for base stations becomes more critical than ever. Batteries are at the heart of this infrastructure, ...



[Telecom Base Station Backup Power Solution: Design Guide ...](#)

Jun 5, 2025 · Discover the 48V 100Ah LiFePO4 battery pack for telecom base stations: safe, long-lasting, and eco-friendly. Optimize reliability with our design guide.



[Mobile Base Station Energy Storage Principle: How It Keeps ...](#)

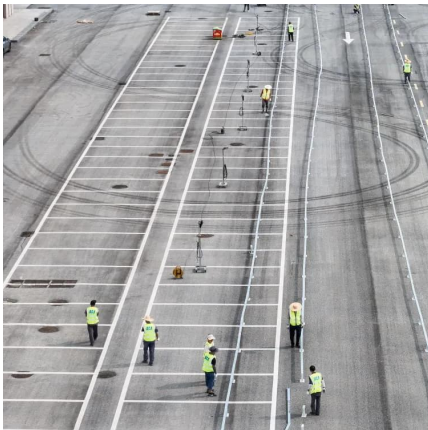
May 6, 2025 · Ever wondered how your phone stays connected during a blackout? Meet the unsung hero of modern connectivity - mobile base station energy storage systems. These ...





[What is the purpose of batteries at telecom base stations?](#)

Nov 7, 2025 · Introduction Telecom base stations are the backbone of modern communication networks, enabling seamless connectivity for mobile telephony, Internet services and ...



[How about base station energy storage batteries .NenPower](#)

Apr 7, 2024 · This section delves into the different types of batteries commonly used in base station energy storage and evaluates their respective strengths and weaknesses. Lithium-ion ...

[How to Determine the Right Battery Capacity for Telecom Base Stations](#)

Mar 10, 2025 · Example: If a base station consumes 500W and needs 4 hours of backup at 48V, the required capacity is:
 $500W \times 4h / 48V = 41.67Ah$ Choosing a battery with a slightly higher ...



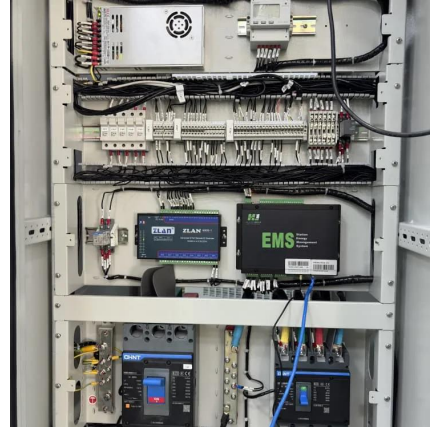
[How about base station energy storage ...](#)

Apr 7, 2024 · This section delves into the different types of batteries commonly used in base station energy storage and evaluates their ...



Overview of Telecom Base Station Batteries

Definition Telecom base station battery is a kind of energy storage equipment dedicatedly designed to provide backup power for telecom base stations, ...

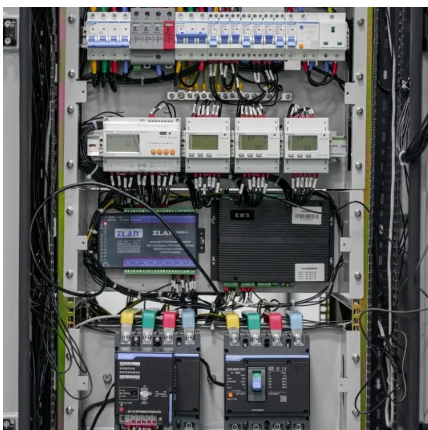


Telecom Base Station Backup Power Solution: ...

Jun 5, 2025 · Discover the 48V 100Ah LiFePO4 battery pack for telecom base stations: safe, long-lasting, and eco-friendly. Optimize reliability with ...

Overview of Telecom Base Station Batteries

Definition Telecom base station battery is a kind of energy storage equipment dedicatedly designed to provide backup power for telecom base stations, applied to supply continuous and ...



How to Determine the Right Battery Capacity ...

Mar 10, 2025 · Example: If a base station consumes 500W and needs 4 hours of backup at 48V, the required capacity is:
 $500W \times 4h / 48V = 41.67Ah$...



[How to Select the Best ESTEL Battery Backup for Base Stations](#)

May 29, 2025 · Choose the best telecom battery backup systems by evaluating capacity, battery type, environmental adaptability, maintenance, and scalability for base stations.



Contact Us

For technical specifications, project proposals, or partnership inquiries, please visit:
<https://bukhobuhle.co.za>

Scan QR Code for More Information



<https://bukhobuhle.co.za>