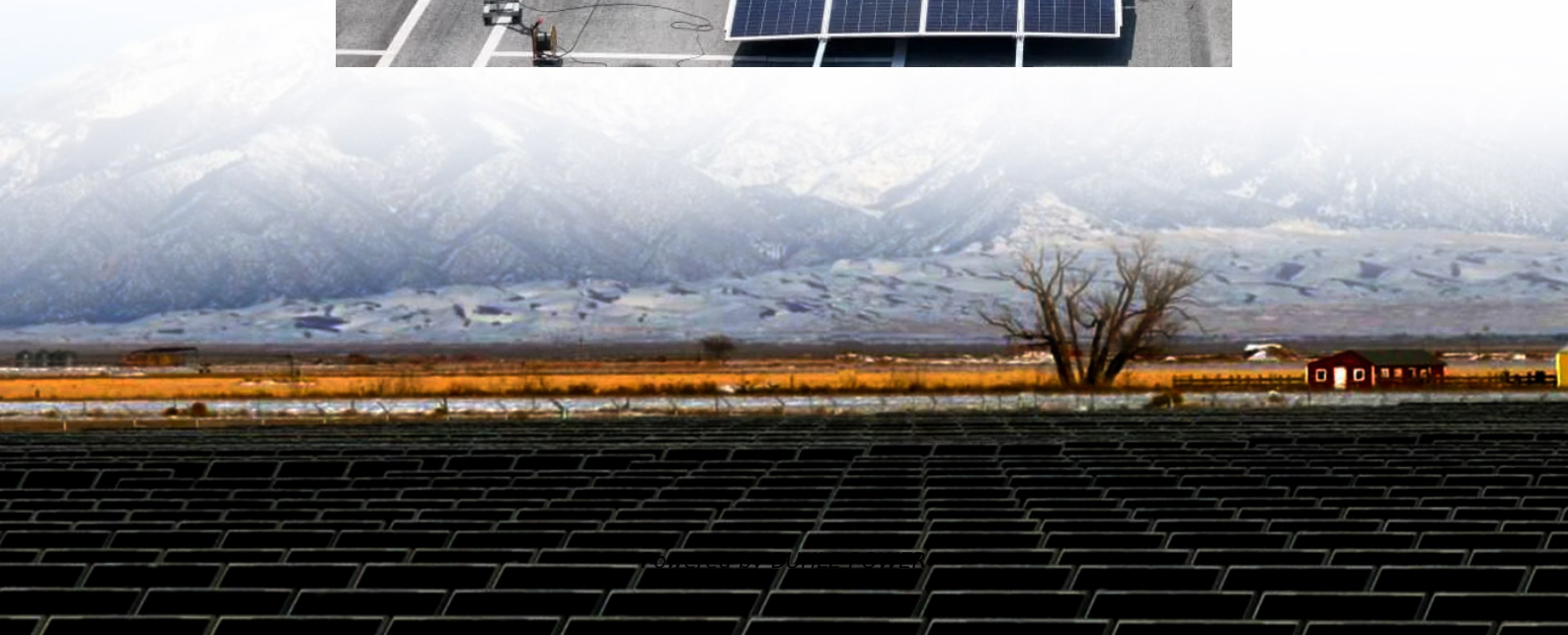


Huawei inverter voltage output range





Overview

What is Huawei solar inverter?

The Huawei solar inverter has emerged as a dominant force in the global solar market, representing one of the most sophisticated and reliable inverter solutions available in 2025.

Does Huawei have a DC/AC Ratio limit on solar inverters?

ads in low-light conditions during the winter season. Huawei has designed the SUN2000 solar inverters such that they can operate in “clipping” mode for sustained periods of time. Therefore, Huawei will not pose firm limits on the DC/AC ratios on its inverters, provided that the desi n.

What is a large DC-to-AC ratio in a Huawei inverter?

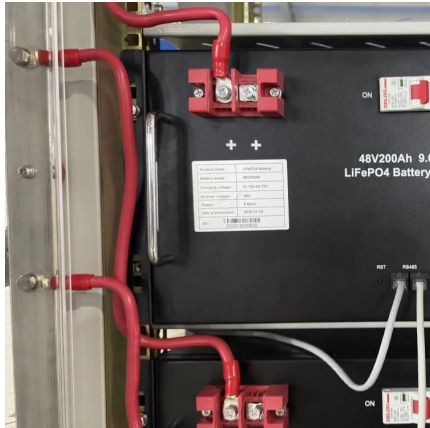
r to such a setup as an “oversized installation”. In these cases, the so-called “DC-to-AC ratio” is larger than 1, or larger than 10 if you like to use percents rather than fractions. Huawei inverters are designed to automatically limit the maximum output power stated on their type plate, regardless o.

Are Huawei solar inverters reliable?

Huawei solar inverters are highly reliable, backed by the company’s position as the world’s #1 inverter manufacturer for six consecutive years. The inverters undergo extensive testing including lightning strikes, extreme temperature cycling, and submersion tests.



Huawei inverter voltage output range



[Huawei Three-Phase Inverter SUN2000-100KTL](#)

The 10 MPPTs that the Huawei SUN2000-100KTL inverter incorporates are characterized by working at a voltage range between 200V and 1000V and by having 20 inputs.; 2 for each of ...

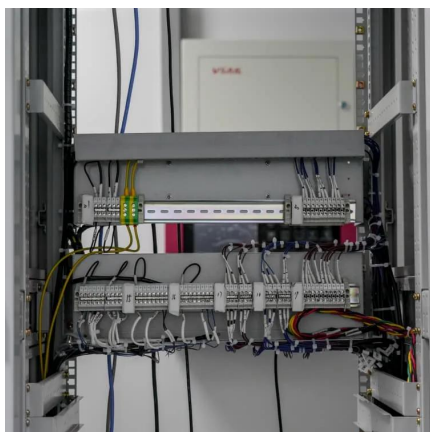
Troubleshooting

Aug 1, 2025 · Alarms range in severity according to the following definitions: Major: The inverter enters the shutdown mode and disconnects from the power grid to stop generating electricity ...



[Huawei Solar Inverter Complete Guide 2025: Models, ...](#)

Sep 2, 2025 · Are Huawei inverters compatible with all solar panels? Huawei inverters are compatible with most solar panels, provided the panel specifications fall within the inverter's ...



[Operations Related to the Special User](#)

Ensure that the DC side of the SUN2000 is energized before setting grid parameters, protection parameters, feature parameters, and grid adjustment parameters.



[Huawei 50 Kw On grid Inverter \(SUN2000-50KTL-M3\)](#)

Short Circuit Current per MPPT :40A Start Voltage: 200V MPPT Operating Voltage Range: 200V~1000V Rated Input Voltage: 600V Number of Inputs: 8 Number of MPP Trackers: 4 ...



[Huawei Solar Inverter Complete Guide 2025: ...](#)

Sep 2, 2025 · Are Huawei inverters compatible with all solar panels? Huawei inverters are compatible with most solar panels, provided the panel ...



Set

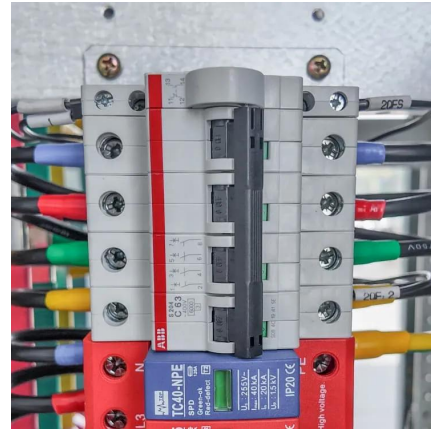
The parameter list provided in this document includes all configurable parameters that vary with the device model and grid code. The actual screen prevails. The parameters are for reference ...





[5. SUN2000-3-10KTL-M1 Datasheet](#)

May 19, 2025 · *3 Any DC input voltage beyond the operating voltage range may result in inverter malfunction. *4 C10/11: 10,000 VA
Disclaimer: the preceding values are measured by an ...

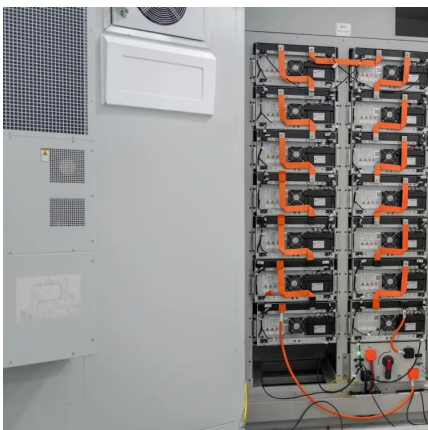
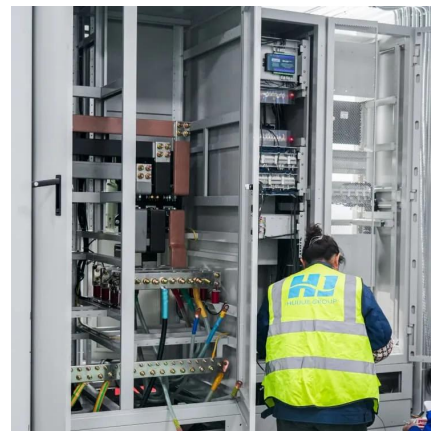


SUN2000

Alarm severities are defined as follows: Major:
The inverter enters the shutdown mode and disconnects from the power grid to stop generating electricity after a fault occurs. Minor:
Some ...

[Huawei Inverter Review - Are They Good?](#)

Nov 17, 2023 · Huawei is famous for manufacturing digital appliances and communication technologies. However, this technology brand also offers ...



[SUN2000-3-4-5-6-8-10KTL-M1 Specs . HUAWEI Smart PV ...](#)

Mar 4, 2000 · *3.Any DC input voltage beyond the operating voltage range may result in inverter malfunction. *4.C10/11: 10,000 VA
Disclaimer: The preceding values are measured by an ...



[Huawei SUN2000-3-10KTL-M1 Smart Hybrid Inverter ...](#)

Nov 26, 2021 · *3 Any DC input voltage beyond the operating voltage range may result in inverter improper operating. *4 C10 / 11: 10,000 VA *5 SUN2000-3~10KTL-M1 raises potential between ...



[Understanding Grid-Connected Voltage Range in Huawei Inverters](#)

SunContainer Innovations - When designing a solar power system, the grid-connected voltage range of your inverter is a critical factor. For Huawei inverters, this parameter ensures ...

[Using Huawei SUN2000 inverters with high /A ratios](#)

Jan 14, 2025 · Using Huawei SUN2000 inverters with high DC/AC ratios When the total Watt-peak (Wp) power of the solar modules exceed the nominal AC power rating of the connected solar ...



[SUN2000-3-4-5-6-8-10KTL-M1 Specs](#)

Mar 4, 2000 · *3.Any DC input voltage beyond the operating voltage range may result in inverter malfunction. *4.C10/11: 10,000 VA Disclaimer: The ...



SUN2000

The typical noise value is the test result obtained under typical working conditions in a lab. To avoid complaints, do not install the inverter in a noise-sensitive area. The typical working ...



[Certificate of IEC-62116 and IEC-61727 for SUN5000](#)

Apr 25, 2025 · Input voltage 1100Vdc MPPT voltage range 160 - 1000Vdc Max. input current 16Adc*2 Max. Isc 22Adc*2 Rated output power 5KW 6KW 8KW Max. Output Apparent 5.5KVA ...

Contact Us

For technical specifications, project proposals, or partnership inquiries, please visit:
<https://bukhobuhle.co.za>

Scan QR Code for More Information



<https://bukhobuhle.co.za>