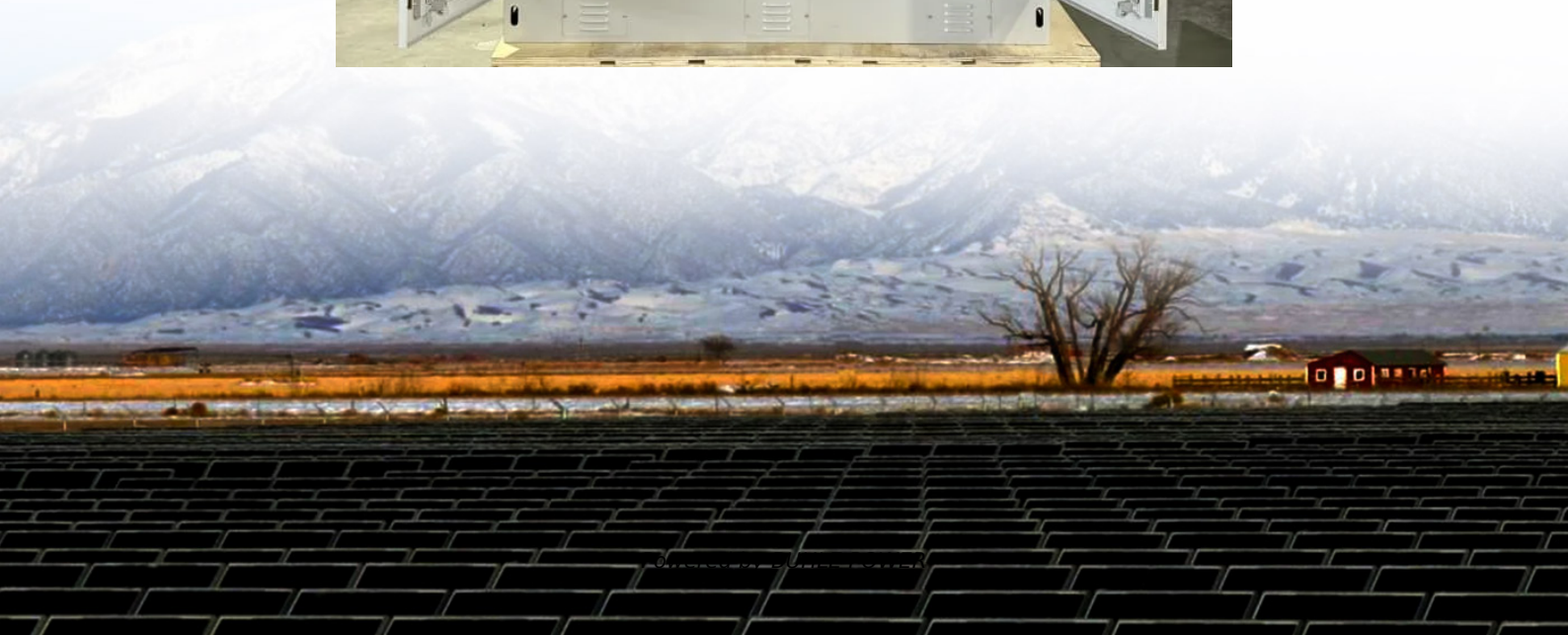


Indoor and outdoor grounding of mobile base stations





Overview

What is the rational design of a grounding grid for Mobile substations?

The rational design of a grounding grid is a crucial prerequisite for ensuring the safe and reliable operation of mobile substations. This paper discusses the design of the grounding grid for mobile substations from the perspective of standardized design, aiming to minimize on-site construction and enable rapid deployment.

What are the standards for cell site grounding & telecommunications tower grounding?

Our cell site grounding, telecommunications grounding and communication tower grounding methods closely follow the Motorola R56 standards and IEEE Std 142-1991 and IEEE Std 142-2007 recommended Practice for Grounding of Industrial and Commercial Power Systems guidelines for cell site and telecommunications sites.

Why should a grounding grid be standardized?

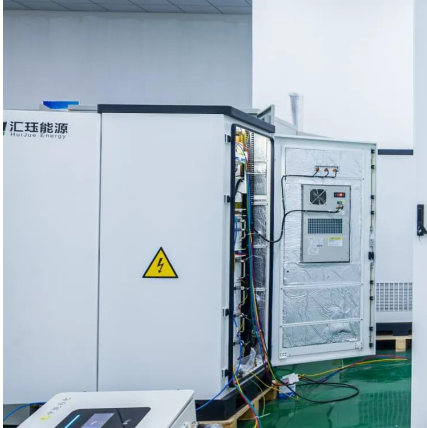
The rational design of the grounding grid is a crucial prerequisite for ensuring the safe and reliable operation of mobile substations. Standardizing the grounding design of mobile substations can reduce subsequent design work and on-site construction.

Who provides cell site grounding & telecommunication tower grounding services?

The experts at E&S Grounding Solutions provide comprehensive cell site grounding and telecommunication grounding solutions for Cell Site grounding or BTS Cellular Base Station grounding. Our cell site grounding and telecommunication tower grounding services protect your valuable equipment!



Indoor and outdoor grounding of mobile base stations



[Mobile Communication Base Station & Microwave Station Grounding](#)

Feb 20, 2021 · Rational design of grounding systems for various mobile communication base stations is an important issue in current grounding projects. Microwave stations and mobile ...

[Cell Tower Grounding: Safety & Compliance Solutions](#)

5 days ago · Cell site grounding and telecommunications grounding solutions best practices Proper electrical grounding is essential for Cell Sites, BTS Cellular Base Stations, ...



[Annex: Base-Station Site Solutions , part of Introduction to Mobile](#)

Apr 17, 2025 · All mobile network vendors offer base stations based on Software Designed Radio (SDR) with various options for installing the base-station modules indoor and outdoors, just by ...



[Energy-efficient indoor hybrid deployment strategy for 5G mobile ...](#)

May 1, 2024 · In the context of 5th-generation (5G) mobile communication technology, deploying indoor small-cell base stations (SBS) to serve visitors has become co...



[Mobile Communication Base Station & Microwave Station Grounding](#)

Oct 24, 2022 · It is extremely difficult to make the grounding resistance small and meet the requirements. Therefore, rational design of grounding systems for various mobile ...



[IEEE Guide for Generating Station Grounding](#)

Abstract: Grounding practices that have generally been accepted by the electric utility industry as contributing to effective grounding systems for personnel safety and equipment protection in ...



[Enhancing 5G indoor mobile coverage with SUDAS](#)

Jun 5, 2024 · For indoor scenarios, a mm-wave backhaul link between indoor and outdoor base stations would suffer from extreme penetration losses. Apart from this, indoor coverage ...





Typical Grounding of Mobile Communication Base Station

It is extremely difficult to make the grounding resistance of the base station's ground grid small and meet the regulatory requirements. Therefore, the reasonable design of the grounding ...



Mobile Communication Base Station

Feb 20, 2021 · Rational design of grounding systems for various mobile communication base stations is an important issue in current grounding ...

Study on Indoor and Outdoor Environment for Mobile Ad ...

Oct 8, 2007 · Most of MANET simulations based on random mobility models, e.g. random waypoint model, models insufficient to reflect the environmental constraints. In this paper, we ...



Base stations and networks

5 days ago · Mobile phones and mobile devices require a network of radio base stations to function. Radio waves have been used for communication for more than 100 years.



[ITU-T Rec. K.112 \(07/2019\) Lightning protection.](#)

Summary Recommendation ITU-T K.112 provides a set of practical procedures related to the lightning protection, earthing and bonding of radio base stations (RBSs). It considers two types ...



[Design of grounding scheme for mobile substation](#)

The rational design of the grounding grid is a crucial prerequisite for ensuring the safe and reliable operation of mobile substations. Standardizing the grounding design of mobile substations can ...



[\(PDF\) Design of grounding scheme for mobile substation](#)

Jul 10, 2024 · This paper discusses the design of the grounding grid for mobile sub stations from the perspective of standardized design, aiming to minimize on-site construction and enable ...



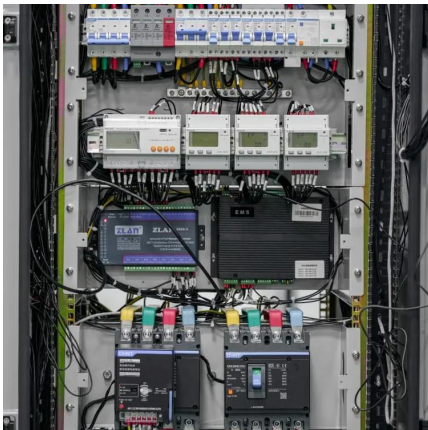
[Grounding Architecture Design for Wireless Base Stations](#)

Nov 5, 2012 · In this paper several EMC grounding architectures for interconnection of PCBs, backplanes, and card cages to enclosures for Wireless Base Stations are described in the ...



[Telecommunications Grounding and Bonding_ nVent](#)

Nov 3, 2025 · Proper grounding and bonding for telecommunications infrastructure is essential to network reliability and public safety. nVent ERICO is a global leader in grounding and bonding ...

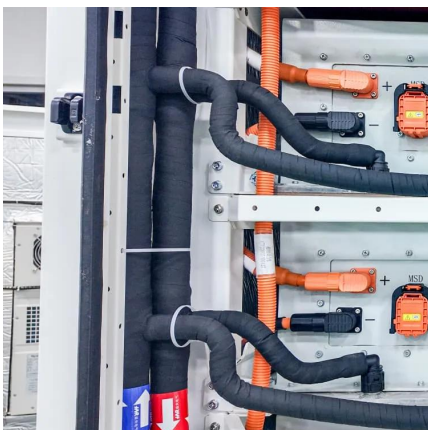


[Complete Guide to 5G Base Station ...](#)

Nov 17, 2024 · Explore how 5G base stations are built--from site planning and cabinet installation to power systems and cooling solutions. Learn the ...

[BTS base station on sales](#)

5. Lightning protection grounding system Mobile communication base stations are generally built on high buildings or hillsides, especially antennas are installed on higher towers. The towers ...



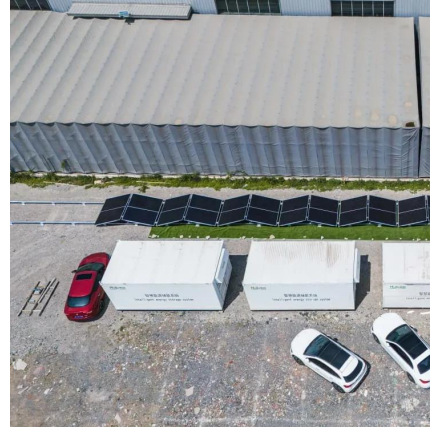
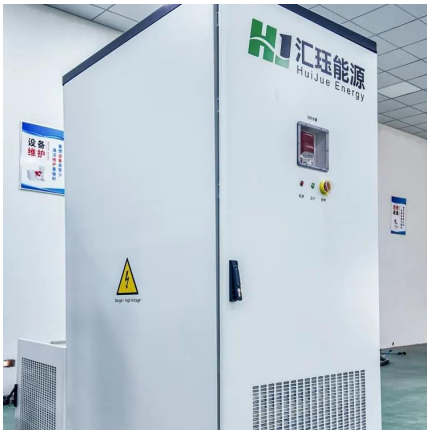
[Study of the correlation between outdoor and indoor ...](#)

Jan 1, 2019 · The main objective of this assessment is to study the correlation between the outdoor and the indoor exposure produced by cellular base stations and to investigate the ...



Green Base Station Solutions and Technology

Mar 20, 2011 · The SDR soft base station platform retains the rack structure form of traditional indoor and outdoor base stations. But it can also launch ...

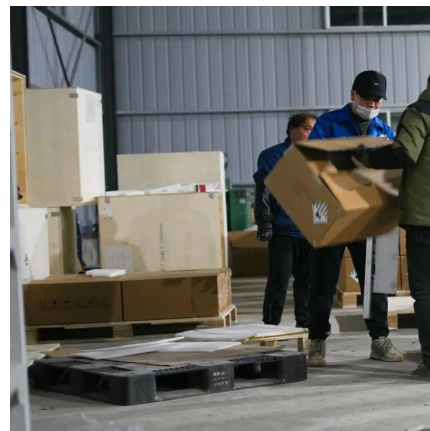


Mobile Communication Base Station

Oct 24, 2022 · It is extremely difficult to make the grounding resistance small and meet the requirements. Therefore, rational design of grounding ...

Cell Tower Grounding: Safety & Compliance ...

5 days ago · Cell site grounding and telecommunications grounding solutions best practices Proper electrical grounding is essential for Cell Sites, BTS ...



Contact Us

For technical specifications, project proposals, or partnership inquiries, please visit:
<https://bukhobuhle.co.za>



Scan QR Code for More Information



<https://bukhobuhle.co.za>