

Ir2101 three-phase bridge inverter





Overview

Does ir2101 drive a full bridge inverter?

Figure 8 The IR2101 drive the full bridge inverter. IR2101 also has been used in design the full bridge inverter as introduced in figure 8 Figure 1. The block diagram of the 555 timer. Since the factor $L_n(2)$ is the same for both the T_{on} and T_{off} , and $(R_a + R_b) > R_b$, so $T_{on} > T_{off}$, and the duty cycle $> 50\%$ Figure 2.

Can ir2101 drive MOSFET gate in a half bridge inverter?

In this search IR2101 has been used to drive the MOSFET gate in a half bridge inverter as depicted in figure 7. The IR2101 driver is a powerful and robust in Figure 4. The output of the modify 555 timer. demonstrated in figure 4, where each square is equal to 10ms. 2.2.

What is ir2101 driver IC?

The project consists of 3x half-bridge IR2101 driver IC and 6 channel high current N-MOSFETS. The project can be configured as 3 independent half-bridges H-bridge for a brushed DC motor, or a single high current. This is a discrete Half-bridge driver based on IR2104 gate driver IC and low impedance high current N channel IRFP4368 MOSFETS.

What is ir2104 gate driver IC?

This is a discrete Half-bridge driver based on IR2104 gate driver IC and low impedance high current N channel IRFP4368 MOSFETS. The IR2104 is a high voltage, high speed power MOSFET driver with independent high and low side referenced output channels.



Ir2101 three-phase bridge inverter



[IR2101/IR21014 IR2102/IR21024](#)

May 28, 2008 · The IR2101/IR21014/IR2102/IR21024 are high voltage, high speed power MOSFET and IGBT drivers with in-dependent high and low side referenced output chan-nels. ...

[Half-Bridge with N-channel Mosfets and IR2101](#)

Aug 6, 2023 · 0 I am building a half-bridge with IR2101 as half bridge driver and I am being confused by something in the datasheet of IR2101. My main supply voltage will be 40V. The ...

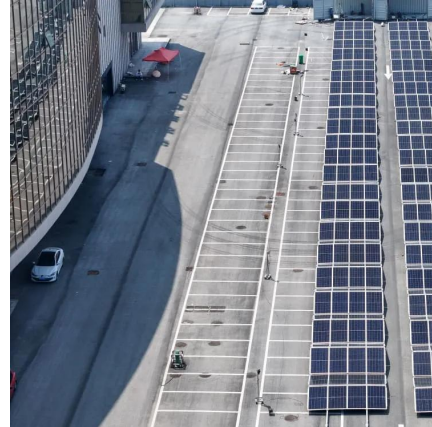


[Driving H-bridge with IR2101](#)

Dec 29, 2022 · I found a 500W inverter implementation with an Arduino Nano and IR2101. According to its schematic, I think the input connections of ...

[2-Level full bridge Inverter \(3-phase application\)](#)

The three-phase full-bridge inverter topology is the simplest and most widely used structure for systems connected to the grid. It consists of three sets ...



[Troubleshooting this H-bridge circuit with the IR2101](#)

Dec 3, 2025 · Hi @MuhammadAwaludinAshari - Thanks for adding the source of the circuit which you're using. However, as commented above, details of what drive signals are being sent to ...

power electronics

Jul 31, 2021 · I am trying to make BLDC driver with IR2101. MOSFETs I am using are IRFB4110PBF. So for testing I am currently using one pair. I am using oscilloscope to see the ...



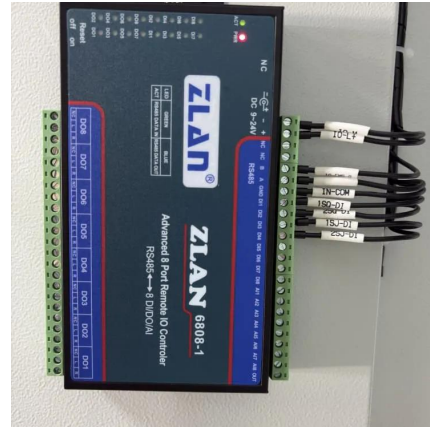
arduino

Aug 11, 2023 · I'm trying to make a controller with 3 H bridges (N-FET, IR2101 and a Arduino Mega). I'm sure that the problem is in my code but I don't know how to fix it. I think that the ...



Bootstrapping circuit in IR2101

Oct 20, 2020 · Please explain how the bootstrapping circuit help in driving both the mosfets connected to IR2101 driver. Please explain this by taking an example of any voltage so that I ...



IR2101 cross-conduction

Jan 14, 2018 · The IR2101 is an high and low driver typically used to drive MOSFET half bridges. On this blog, it is said (IR2110 is almost the same as IT2101): "IR2110 can't be used to drive ...

2-Level full bridge Inverter (3-phase application)

The three-phase full-bridge inverter topology is the simplest and most widely used structure for systems connected to the grid. It consists of three sets of "bridges", each of which consists in ...



Functionality of IR2101 driver

Jun 19, 2020 · Please tell me the use of high-side floating supply voltage (VB) and high-side floating supply offset voltage (VS) in the IR2101 (datasheet) driver circuit and also the use of ...



IR2101 datasheet

Features Gate drive supply range from to 20V
Undervoltage lockout 3.3V, 5V, and 15V logic
input compatible Matched propagation delay for
both channels Outputs in phase with inputs ...

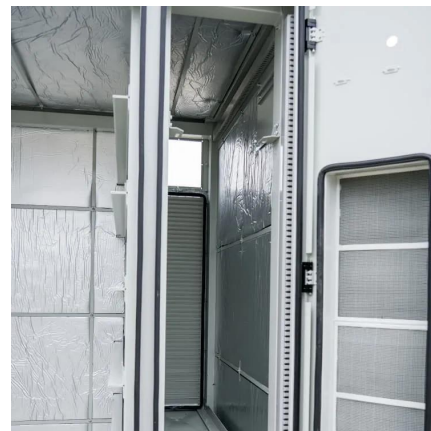


[Half-Bridge with N-channel Mosfets and IR2101](#)

Aug 6, 2023 · I am building a half-bridge with IR2101 as half bridge driver and I am being confused by something in the datasheet of IR2101. My main supply voltage will be 40V. The ...

[Driving H-bridge with IR2101](#)

Dec 29, 2022 · I found a 500W inverter implementation with an Arduino Nano and IR2101. According to its schematic, I think the input connections of both IR2101 are wrong. If it is ...



brushless dc motor

May 15, 2022 · brushless dc motor - Half-bridge driver IR2101 shorting high side and low side (In a weird condition) - Electrical Engineering Stack Exchange



[The ir2101 drive the full bridge inverter. ir2101 also has](#)

The output of the full bridge inverter without filter. Figures 13, 14 show the output voltage of the full bridge inverter with and without filter. Figure 12. The design of the full bridge inverter. Figure ...

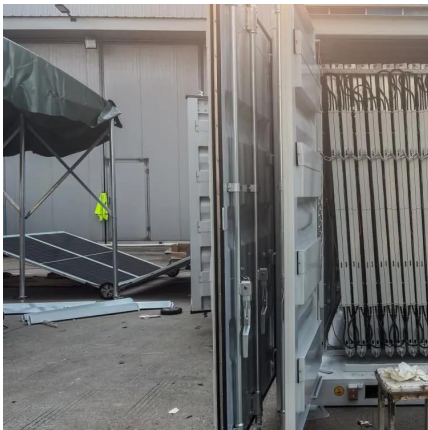


[Breadboard an Arduino-based H-bridge Motor Controller](#)

Sep 26, 2024 · Guide to breadboarding an Arduino controlled H-bridge featuring MOSFET driver ICs with bootstrapped high-side drivers. The lessons in theory and circuit construction ...

[inverter using ir2101](#)

Sep 22, 2013 · Dear members, I have designed full bridge pure sine wave inverter using IR2101 with specs Mosfets : irf740 mosfet driver : 2101 bootstrap capacitor : 67 Uf Gate to source res : ...



[Lecture 23: Three-Phase Inverters](#)

Feb 24, 2025 · In particular, considering "full-bridge" structures, half of the devices become redundant, and we can realize a 3-phase bridge inverter using only six switches (three half ...



Contact Us

For technical specifications, project proposals, or partnership inquiries, please visit:
<https://bukhobuhle.co.za>

Scan QR Code for More Information



<https://bukhobuhle.co.za>