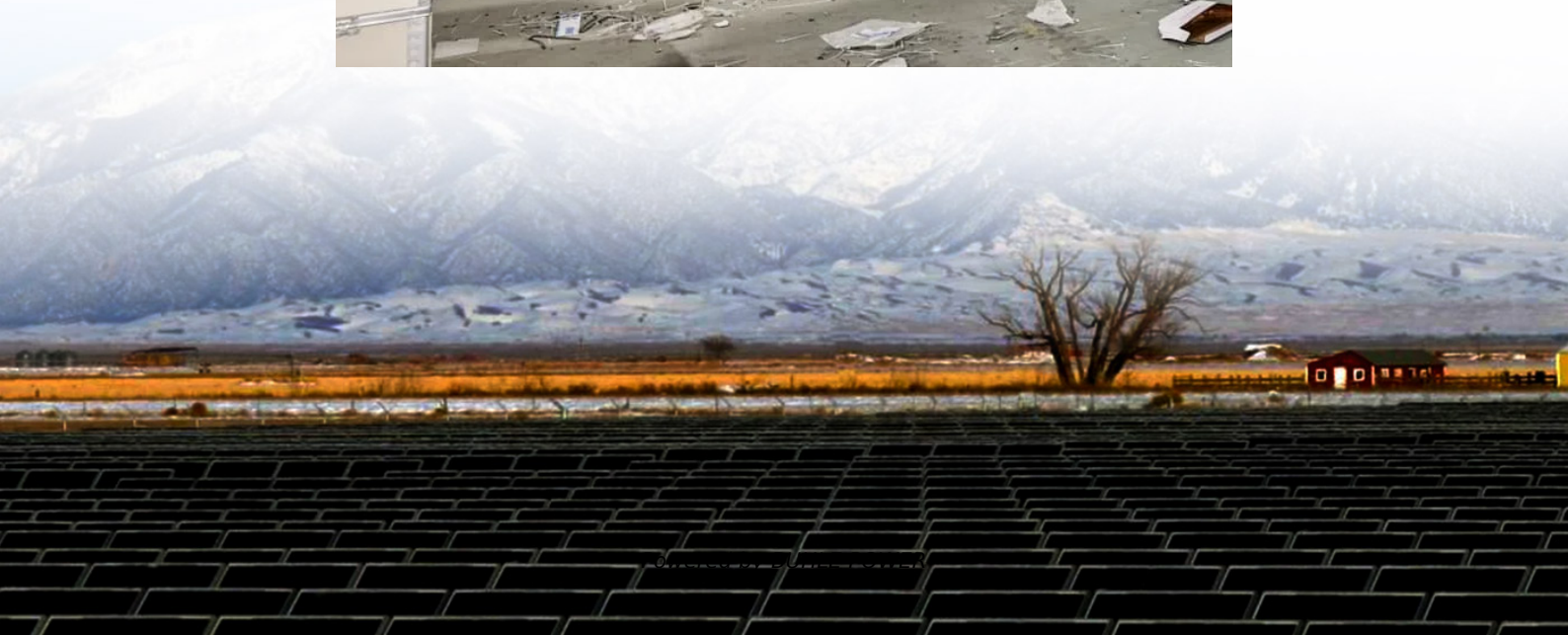


Is a communication tower a base station





Overview

What are base stations & cell towers?

These structures facilitate the transmission and reception of signals between mobile devices and the wider network, enabling voice calls, text messages, and data services. Understanding the role and technology behind base stations and cell towers is key to appreciating how mobile networks operate and evolve to meet growing demands. Base Stations.

What is the difference between a base station and a tower?

In summary, the base station is the active component responsible for network communication, while the tower is the physical structure that supports the base station. In summary, base stations are critical for modern telecommunications as they serve as the link between mobile devices and the extensive network infrastructure that spans the globe.

What is a base station in telecommunications?

In telecommunications, a base station is a fixed transceiver that serves as the main communication point for one or more wireless mobile client devices. It not only connects wireless devices to each other but also links them to other networks or devices, often through dedicated high-bandwidth wired or fiber optic connections.

What is a base station and how does it work?

A base station is a fixed point of communication between mobile devices and the wider telecom network. It transmits and receives radio signals, enabling your phone to access voice, data, and internet services. Together, thousands of base stations form a seamless web of coverage known as a cellular network. How Does It Work?



Is a communication tower a base station

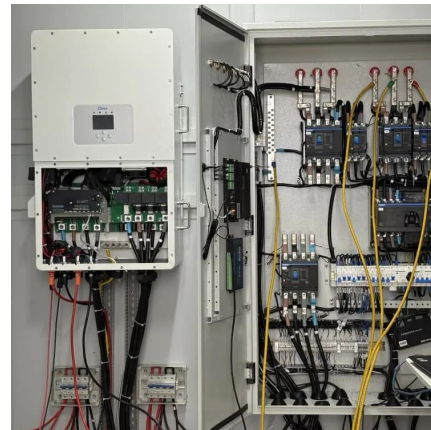


What is a base station?

Mar 4, 2021 · In telecommunications, a base station is a fixed transceiver that is the main communication point for one or more wireless mobile client devices.

Exploring communication base stations

Dec 18, 2024 · The specific working principles of different types of base stations, such as 2G, 3G, 4G, and 5G base stations, may vary depending on the communication technology standards ...



What are Base Station in Telecommunications?

Nov 21, 2025 · Types of Base Stations Macrocell towers cover several miles. You find these in rural areas. Microcells serve dense urban zones with high traffic. Picocells and femtocells ...

Base Stations and Cell Towers: The Pillars of Mobile ...

May 16, 2024 · Base stations and cell towers are critical components of cellular communication systems, serving as the infrastructure that supports seamless mobile connectivity. These ...



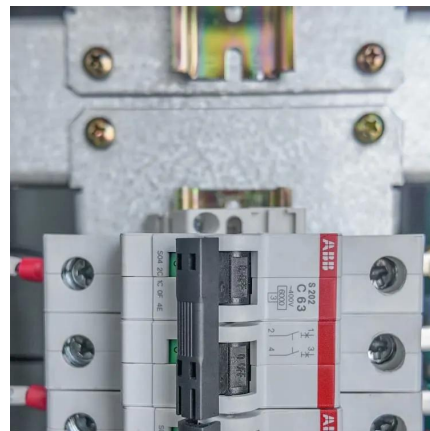
[Exploring communication base stations](#)

Dec 18, 2024 · The specific working principles of different types of base stations, such as 2G, 3G, 4G, and 5G base stations, may vary depending ...



[What Does a Base Station Do and Why Is It Essential for ...](#)

Sep 5, 2025 · From making a phone call in a busy city to streaming videos in remote villages, the ability to stay connected relies on one critical piece of infrastructure: the telecom base station.
...



[What Is a Base Station?](#)

Sep 7, 2025 · Meaning of a base station in wireless networks, cell towers, and cordless phones, serving as a hub for communication, data transmission, and device charging.





Base Stations

Jul 23, 2025 · The present-day tele-space is incomplete without the base stations as these constitute an important part of the modern-day scheme of wireless communications. They are ...

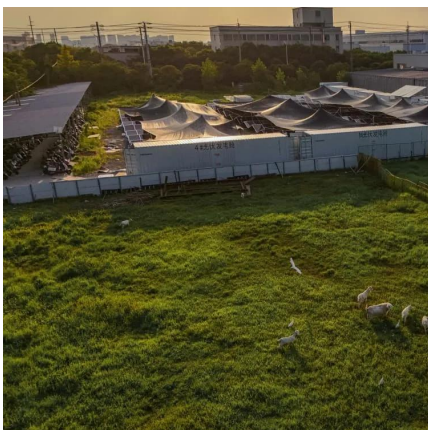


[What Is A Base Station?](#)

Apr 22, 2024 · A base station is an integral component of wireless communication networks, serving as a central point that manages the transmission and reception of signals between ...

[What Is a Base Station? Definition and How It Works](#)

Oct 10, 2025 · A base station is a fixed transceiver that serves as the central communication point for mobile devices within a defined geographical area, known as a cell. It is sometimes called ...



[What is Telecommunication Base Station . China Hop](#)

Most people think that the towering iron tower is the entirety of the base station, but in fact, it is just the tower and antenna, just a component of the base station. In addition to these visible ...



Contact Us

For technical specifications, project proposals, or partnership inquiries, please visit:
<https://bukhobuhle.co.za>

Scan QR Code for More Information



<https://bukhobuhle.co.za>