

# **Is the base station power supply a constant current output**





## Overview

---

How does a power supply provide a constant current?

As you can see the power supply will try to provide a constant current by reducing the output voltage. Characteristics of Constant Current Source: Fixed Output Current: The current supplied by a CC source remains constant. Varying Voltage: The voltage adjusts based on the resistance or impedance of the load.

What happens if a power supply is regulated to a constant value?

The voltage is regulated to a constant value, and the current varies as a function of the load. If the load current is high and the load attempts to draw current above the set current limit, the power supply will by default limit the current to the set value and operate in CC mode.

Is there a constant power source?

A current source is a device that produces constant current, allowing voltage and power to vary. Is there a constant power source – i.e., a device whose output power never varies?

No matter the nature of what it is connected to, its voltage and amperage would be adjusted to provide constant power.

What is constant power (CP) in a power supply?

So far, we have covered power supplies that can regulate based on current, voltage, or both. In order to limit the output power, and therefore input power, a third operating mode is introduced: Constant Power (CP). While operating in Constant Power mode, the voltage is controlled such that the output power remains constant.



## Is the base station power supply a constant current output

---



### AN-2301

Nov 15, 2023 · Most of the applications require the power supply to work either in Constant Voltage (CV) mode, where the output voltage needs to be kept at a chosen value, or in ...



### [Constant Current Power Supplies](#)

May 29, 2019 · A constant current power supply can be represented as a four terminal active device. The input represents a DC voltage source for basic current regulators, and it ...



### [Constant Voltage, Constant Current, and Constant Power](#)

Constant Voltage Mode in Power Supply  
Constant Current Mode in Power Supply  
Constant Power Mode in Power Supplies  
Constant Voltage Power Supply For LEDs  
So far, we have covered power supplies that can regulate based on current, voltage, or both. In order to limit the output power, and therefore input power, a third operating mode is introduced: Constant Power (CP). While operating in Constant Power mode, the voltage is controlled such that the output power remains constant. In Figure 7 we keep our  
See more on astrodynetdi Lincoln Electric

## Constant Current vs Constant Voltage Output ...

A CC power source will maintain current at a



relatively constant level, regardless of fairly large changes in voltage, while a CV power source will ...

### Understanding Constant Current and Constant Voltage Sources

Oct 22, 2024 · A constant voltage source provides a steady output voltage regardless of the load current, making it ideal for digital electronics, USB chargers, and general power supplies.



### Is there a constant power supply?

Apr 1, 2014 · A voltage source is a device that produces constant voltage, but allows amperage and power to vary, in accordance with the laws of ...

### Understanding constant voltage & current

R& S® Essentials , Power supplies fundamentals  
Understanding Constant Voltage & Constant Current  
Author: Paul Denisowski, Test & ...



### Constant Current vs Constant Voltage Output

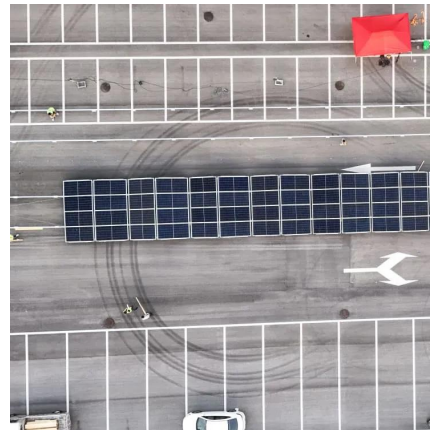
A CC power source will maintain current at a relatively constant level, regardless of fairly large changes in voltage, while a CV power source will maintain voltage at a relatively constant ...





### [Constant Voltage \(CV\) vs Constant Current ...](#)

Aug 18, 2021 · A constant-current power supply is a power supply circuit that controls the output current to a constant level. Constant-current power ...



### [Understanding Constant Current and ...](#)

Oct 22, 2024 · A constant voltage source provides a steady output voltage regardless of the load current, making it ideal for digital electronics, USB ...

### [Understanding constant voltage & current . Rohde & Schwarz](#)

R&S® Essentials , Power supplies fundamentals  
Understanding Constant Voltage & Constant Current  
Author: Paul Denisowski, Test & measurement expert  
The following will explain the ...





### [A Constant-current Source](#)

Mar 1, 2020 · A Constant-current Source  
Frequently, such as when you want to measure temperature with a silicon diode, it is desirable to have an easily reproducible source of a ...

### [Constant Voltage \(CV\) vs Constant Current \(CC\) .. Matsusada Precision](#)

Aug 18, 2021 · A constant-current power supply is a power supply circuit that controls the output current to a constant level. Constant-current power supplies are used to power LED lighting ...



### [Is there a constant power supply?](#)

Apr 1, 2014 · A voltage source is a device that produces constant voltage, but allows amperage and power to vary, in accordance with the laws of electricity. A current source is a device that ...

### [B& K Precision Corporation](#)

Jun 5, 2025 · In Constant Current (CC) mode, the power supply will attempt to maintain a steady current output, regardless of changes in the DUT's resistance (within certain limits).





### [Constant Voltage, Constant Current, and Constant Power](#)

5 days ago · Switch Mode Power Supplies (SMPS) are equipped with the ability to control their output characteristics based on either voltage, current, or power. [Learn more.](#)

## Contact Us

---

For technical specifications, project proposals, or partnership inquiries, please visit:  
<https://bukhobuhle.co.za>

### Scan QR Code for More Information



<https://bukhobuhle.co.za>