

Nine MZ inverter converted to 220V





Overview

What is a 12V to 220V inverter circuit?

Overall, the 12v to 220v inverter circuit using MOSFETs is an excellent way to convert power from one voltage to another. It is easy to assemble and operates efficiently. With its low power loss, compact size, and reliable performance, this inverter circuit is an excellent choice for powering electronic devices in remote locations.

How to convert 12V to 220V inverter circuit using MOSFET?

The 12v to 220v inverter circuit using MOSFET is one of the most popular and reliable methods of converting electricity from one voltage to another. This method makes use of MOSFETs (metal-oxide-semiconductor field-effect transistors) to convert the lower voltage of 12 volts to the higher voltage of 220 volts.

Can a small inverter power up small devices?

A small but powerful inverter circuit can power up your small devices. A Inverter with square wave Ac on output. Inverters are widely used devices in electronics and electrical circuits. An inverter converts corresponding DC voltage into AC.

What is the suitable temperature for a pure sine wave inverter?

The suitable temperature is 10°C~50°C, avoid direct sunlight and heat dissipation. □Why choose it□This pure sine wave inverter is a power converter that converts 12V/24V/48V/60V DC to 220V AC. The output power can be used for a variety of device types, making it the ultimate car charger for car travel, vacations or remote workplaces.



Nine MZ inverter converted to 220V

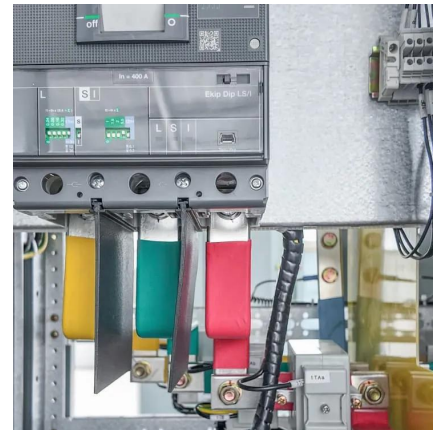


[Simple Inverters 12V to 220V, comparision, ...](#)

Apr 15, 2023 · This time I will explain two of the simplest ways to make a 12V to 220V inverter, one with transistors and the other with Mosfet. Most ...

[Series Z-source and nine-switch dual-output inverter stage ...](#)

Feb 10, 2017 · Based on the NS-TSMC, a modified topology, named as series Z-source and nine-switch dual-output inverter stage two-stage matrix converter (ZS-NS-TSMC), is proposed, in ...



[12v DC to 220v AC inverter circuit using TL494 IC](#)

Mar 3, 2025 · How does the inverter work? The circuit operates by using TL494 and MOSFETs (IRFZ44N) in a push-pull configuration to switch the DC input at high frequencies signals.

[Pure Sine Wave Inverter 12V to 220V 3000W-6000W Peak ...](#)

?Why choose it?This pure sine wave inverter is a power converter that converts 12V/24V/48V/60V DC to 220V AC. The output power can be used for a variety of device types, ...



[Simple Inverters 12V to 220V, comparison, testing, and real](#)

Apr 15, 2023 · This time I will explain two of the simplest ways to make a 12V to 220V inverter, one with transistors and the other with Mosfet. Most often this type of inverters are made from ...

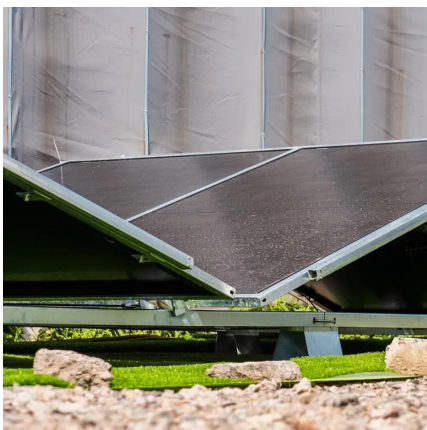
[How does a 12V to 220V Inverter Work?](#)

Aug 7, 2024 · If a 12V AC is converted to 220V, the turns ratio of the primary and secondary coils in the transformer in the inverter has to be 1:19. This ...



[Multilevel Inverter Based on a Dual Two-Level Nine-Switch...](#)

Feb 19, 2025 · This work proposes a new inverter topology for dual three-phase or six-phase motor drive systems with multilevel output characteristics. The proposed topology is based on ...





[100w Inverter circuit 12V to 220V using Transistor](#)

Sep 19, 2020 · It can be converted 12VDC to 220VAC. The maximum output power about 100 watts. It is suitable for normal lighting (all home lamps), also used for radio, LCD TV, Stereo. ...

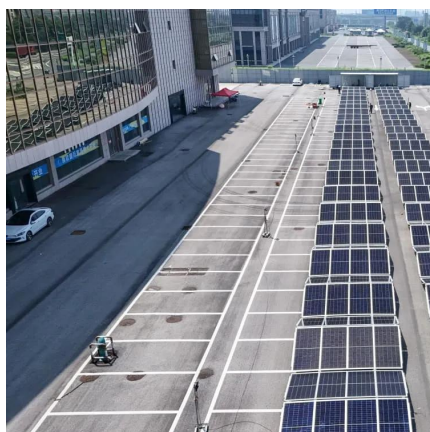


[Complete Guide to Building a DC to AC Inverter Circuit: 12V to 220V](#)

1 day ago · This comprehensive guide will walk you through the theory, components, design considerations, and step-by-step construction of a reliable 12V to 220V inverter circuit. An ...

[Complete Guide to Building a DC to AC ...](#)

1 day ago · This comprehensive guide will walk you through the theory, components, design considerations, and step-by-step construction of a ...



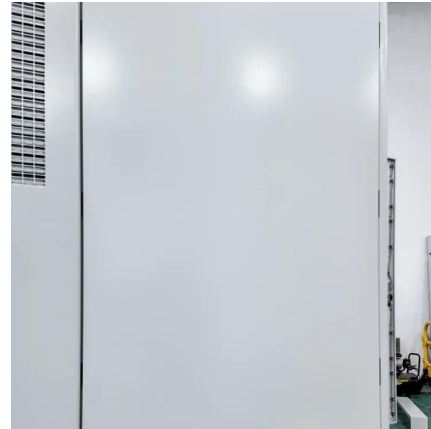
[12v to 220v MOSFET based Inverter Circuit](#)

A small but powerful inverter circuit can power up your small devices. A Inverter with square wave Ac on output. Find this and other hardware projects on Hackster.io.



[100w Inverter circuit 12V to 220V using ...](#)

Sep 19, 2020 · It can be converted 12VDC to 220VAC. The maximum output power about 100 watts. It is suitable for normal lighting (all home lamps), ...



[12v to 220v MOSFET based Inverter Circuit](#)

Type of Transformer Required IC
CD4047 Components Required Circuit
Diagram PCB Designs Working The circuit is simple, IC CD4047 drives the two MOSFETs which are in push-pull configuration. As, the usual transformer cannot work on DC, so we have to make voltage and current changing circuit w.r.t time. So, the flux will induce in the core which will induce a voltage on the secondary winding. You can adjust the potentiometer to get the desired See more on [hackster.io/solderingmind](#)

12v DC to 220v AC inverter circuit using TL494 IC

Mar 3, 2025 · How does the inverter work? The circuit operates by using TL494 and MOSFETs (IRFZ44N) in a push-pull configuration to switch the DC input at high frequencies signals.

[How does a 12V to 220V Inverter Work?](#)

Aug 7, 2024 · If a 12V AC is converted to 220V, the turns ratio of the primary and secondary coils in the transformer in the inverter has to be 1:19. This process involves the knowledge of ...





[12v To 220v Inverter Circuit Using Mosfet](#)

Dec 14, 2019 · Although it may seem like a complicated process, the 12v to 220v inverter circuit is actually quite simple to construct and operate. The circuit consists of three main components - ...

Contact Us

For technical specifications, project proposals, or partnership inquiries, please visit:
<https://bukhobuhle.co.za>

Scan QR Code for More Information



<https://bukhobuhle.co.za>