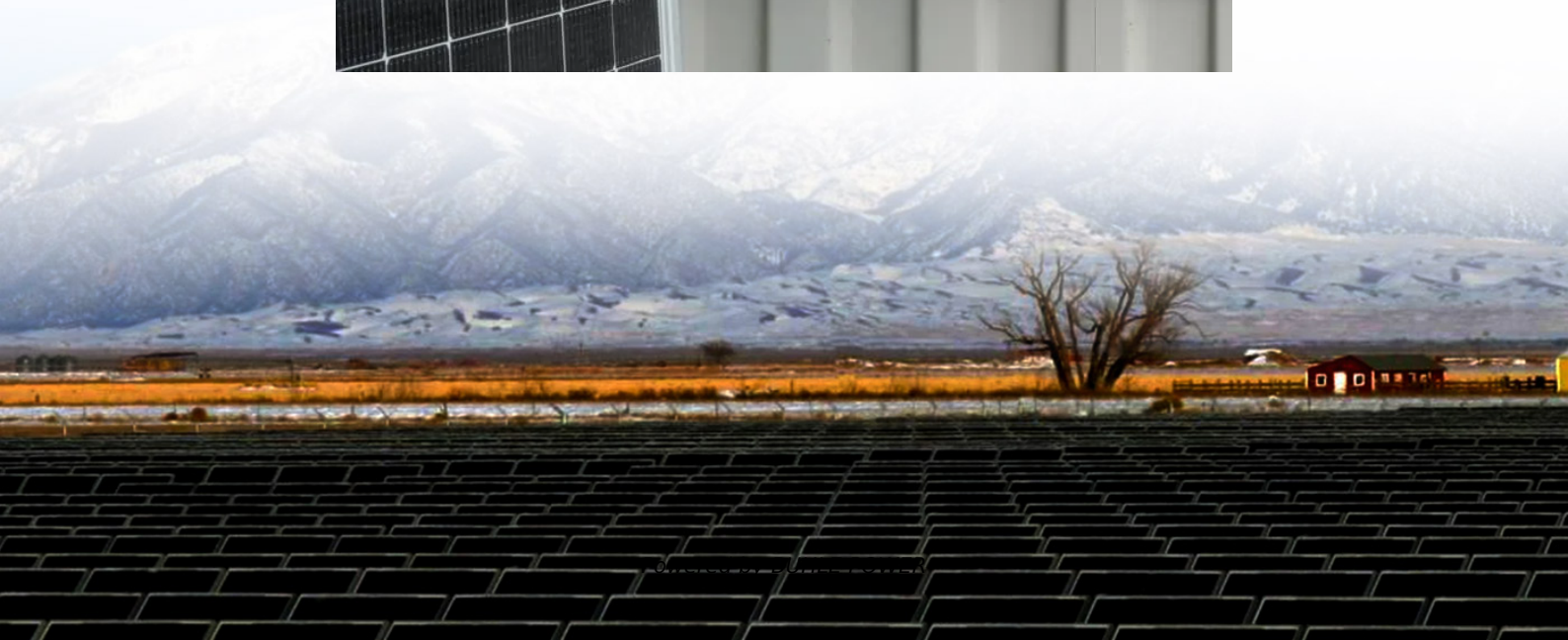


# **Outdoor wireless base station settings**





## Overview

---

How do I set up a wireless base station?

On your computer select the AirPort network and open the AirPort Utility. Click on AirPort in the toolbar, then Base Station. Select your base station and from the menu choose manual setup. Here you will be able to enter a new password. Click on wireless and choose the encryption method you would like to use for the wireless security.

How do I set up a Wyze base station?

In the Wyze app, tap on your Wyze Base Station. Tap on the Settings gear on the top right. Tap Device Info > Wi-Fi Network. Follow the on-screen steps to finish the setup. Now that your Wyze Base Station is all set up, it's time to add your Wyze Cam Outdoor. Move on to the next article, Wyze Cam Outdoor Setup Guide.

Why should you choose TP-Link outdoor wireless base station?

With its centralized management platform and high degree of flexibility, it is the ideal choice for providing point-to-point, point-to-multipoint, and outdoor Wi-Fi coverage. The TP-LINK Outdoor Wireless Base Station pairs professional performance with user-friendly design, making it the perfect solution for both business and home users.

Can I use Wyze base station on a Wi-Fi Connection?

Once it's set up, you can use Wyze Base Station on a Wi-Fi connection - no need for a router. To do this: In the Wyze app, tap on your Wyze Base Station. Tap on the Settings gear on the top right. Tap Device Info > Change Connection. You'll see one of the following screens: Select your network.



## Outdoor wireless base station settings

---



[TP-LINK WBS210 INSTALLATION MANUAL Pdf Download](#)

View and Download TP-Link WBS210 installation manual online. Outdoor Wireless Base Station. WBS210 wireless access point pdf manual download.

### **Wavion LTD.**

Aug 12, 2025 · The Automatic Channel Selection utilizes an embedded algorithm to scan for the best channel with which your base station can work, ensuring optimal capacity, minimal ...



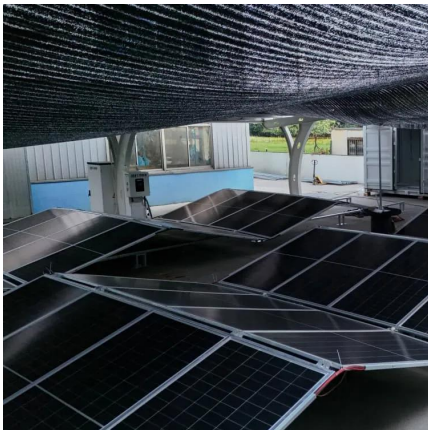
[5GHz 300Mbps Outdoor Wireless Base Station](#)

May 10, 2020 · TP-LINK's 5GHz 300Mbps \* Outdoor Wireless Base Station is specifically designed to provide an effective solution for outdoor wireless networking applications. With its ...



[2.4GHz/5GHz 300Mbps Outdoor Wireless Base Station](#)

Aug 9, 2016 · TP-LINK's Outdoor Wireless Base Station is dedicated to cost effective solutions for outdoor wireless networking applications. With its centralized management application, it is ...



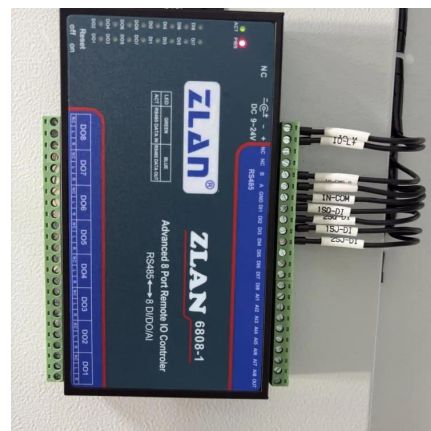
### [Wireless Base Station Quick Installation Guide](#)

Jan 7, 2025 · Adjust the antenna (Figure 1) Press the heads of the antennas at both ends of the device (marked with red lines) with slightly, the antennas will automatically pop out, and then ...



### [Base Station Configuration: A Complete Setup Guide](#)

May 13, 2025 · Easily configure your base station using the WinRtkBaseConfigure.exe Windows application. Insert the SD card into your computer, adjust essential settings like WiFi ...



### [5GHz 300Mbps Outdoor Wireless Base ...](#)

May 10, 2020 · TP-LINK's 5GHz 300Mbps \* Outdoor Wireless Base Station is specifically designed to provide an effective solution for outdoor wireless ...





### [Wyze Cam Outdoor Quick Start Guide](#)

Feb 13, 2024 · This guide is a short user manual with the basics about Wyze Cam Outdoor, including: What's in the box for Wyze Cam Outdoor. How to download the Wyze app. A ...



### [Wyze Base Station Setup Guide](#)

Jul 10, 2025 · Tap Device Info > Wi-Fi Network. Follow the on-screen steps to finish the setup. Now that your Wyze Base Station is all set up, it's time to add your Wyze Cam Outdoor. Move ...

### [Wyze Base Station Setup Guide](#)

Jul 10, 2025 · Tap Device Info > Wi-Fi Network. Follow the on-screen steps to finish the setup. Now that your Wyze Base Station is all set up, it's time ...



### [Outdoor Wireless Base Station](#)

Oct 25, 2024 · The setting is at Rad io page, Region Code. Since Wisnetworks equipment can be set with various radio frequency parameters, such as the radio output power, channels are set ...



[tp-link WBS210 User Manual PDF , Manualsnet](#)

The TP-Link WBS210 is a high-performance, outdoor wireless base station designed for long-range point-to-point or point-to-multipoint connections. It operates on the 2.4GHz frequency ...



## Contact Us

---

For technical specifications, project proposals, or partnership inquiries, please visit:  
<https://bukhobuhle.co.za>

## Scan QR Code for More Information



<https://bukhobuhle.co.za>