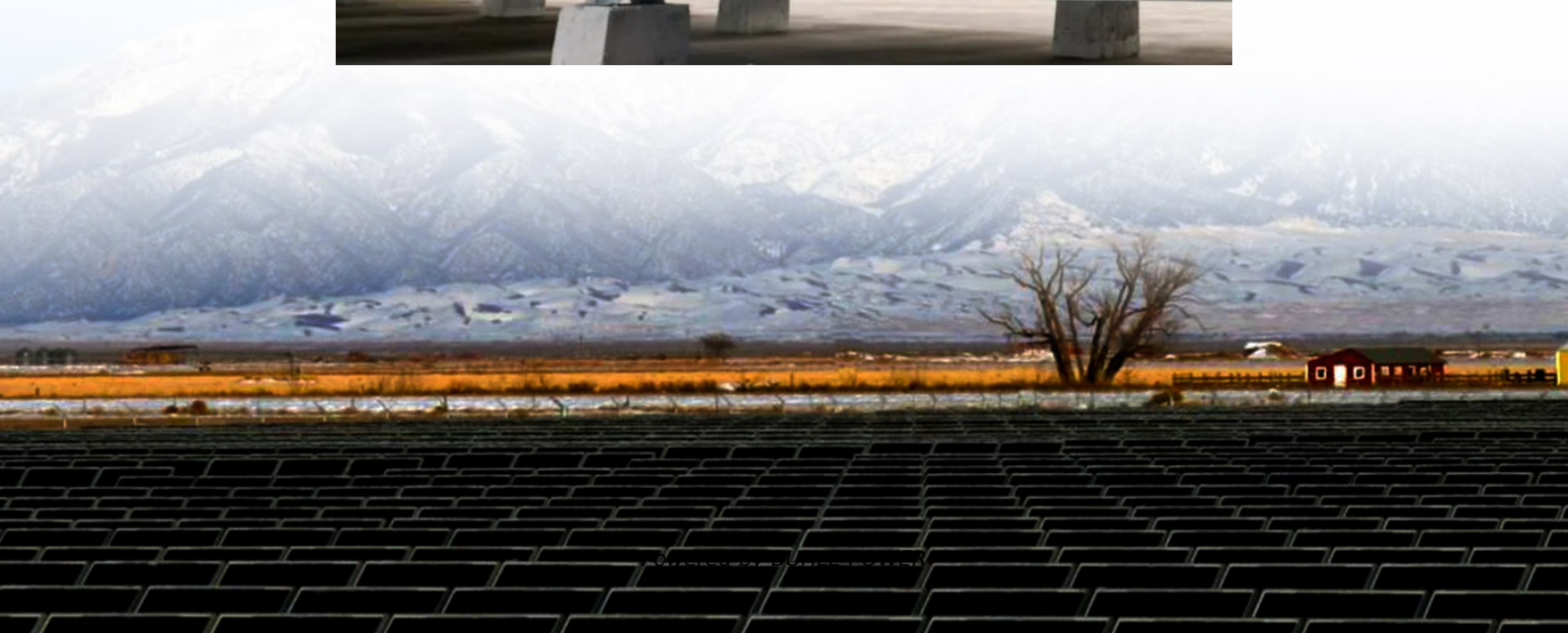


Purpose of base station distribution box circuit breaker





Overview

Key components include circuit breakers, fuses, bus bars, and internal wiring for safety and organization. It ensures load balance, prevents overloads, and protects both equipment and people. How does a distribution box work?

Usually, a distribution box has circuit breakers or fuses that act as a shield to the wiring and appliances hooked to the electrical system. When anomalies arise like short circuits and overload, the circuit breakers cut the power supply in an attempt. It is done to suppress or prevent the system from being damaged or starting a fire.

What is a circuit breaker in a distribution box?

Each circuit breaker in the distribution box corresponds to a different circuit, like a lighting circuit, an appliance circuit, or a specialized area like a kitchen or garage. By isolating each circuit, they make it easy to cut power to specific areas without affecting the entire system.

Why do distribution boxes use circuit breakers or fuses?

Distribution boxes use circuit breakers or fuses to protect each circuit from overloads. This helps prevent electrical fires and damage to the system. There are several types of distribution boxes, including residential, commercial, and industrial, each designed to meet specific electrical needs and safety requirements.

What are the components of a distribution box?

The main components of a Distribution Box are Circuit Breakers and Busbars. Circuit Breakers are safety devices that protect electrical circuits from damage caused by overload or short circuits. Busbars are metallic strips.



Purpose of base station distribution box circuit breaker



[Substation Circuit Breakers: Ensuring Power Distribution](#)

Feb 3, 2025 · The Future of Power Distribution with Substation Circuit Breakers As energy demands grow, the role of substation circuit breakers will become even more critical. The ...

[Power Distribution Boxes Explained Simply](#)

May 21, 2025 · Key Takeaways A power distribution box (also called PDU or distro) directs electricity from a main source to multiple circuits. It acts like a hub or traffic controller, ...



[Circuit Breaker In Substation - Types, Protection And Safety](#)

Dec 5, 2024 · A circuit breaker in substation systems protects transformers and grid infrastructure by interrupting faults like overloads or short circuits. Learn how they work, their types, ...

[Earth Leakage Circuit Breaker \(ELCB\): Working ...](#)

Feb 24, 2012 · Earth Leakage Circuit Breaker or ELCB An Earth-leakage circuit breaker (ELCB) is a safety device used in electrical installations ...



[Distribution Box: Streamlining Electrical ...](#)

Sep 15, 2024 · A distribution box, also known as a breaker box, houses circuit breakers or fuses for electrical distribution. It ensures safe and ...



[Power Distribution Box \(DB Box\) Explained](#)

1 day ago · Electrical panels or distribution board (DB box) houses mainly bus bars, circuit breakers, residual circuit breakers (RCCB), bypass ...



[Circuit Breaker In Substation - Types, ...](#)

Dec 5, 2024 · A circuit breaker in substation systems protects transformers and grid infrastructure by interrupting faults like overloads or short circuits. ...





[Distribution Box: Streamlining Electrical Systems Efficiently](#)

Sep 15, 2024 · A distribution box, also known as a breaker box, houses circuit breakers or fuses for electrical distribution. It ensures safe and efficient power management in buildings. A ...

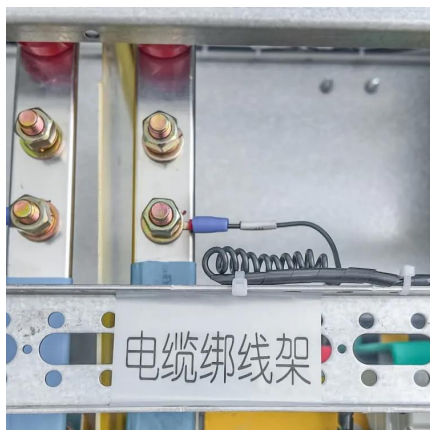


[Power Distribution Box \(DB Box\) Explained , Lito Electrical...](#)

1 day ago · Electrical panels or distribution board (DB box) houses mainly bus bars, circuit breakers, residual circuit breakers (RCCB), bypass equipment, fuses, wires and surge ...

[Substation Circuit Breakers: Ensuring Power ...](#)

Feb 3, 2025 · The Future of Power Distribution with Substation Circuit Breakers As energy demands grow, the role of substation circuit breakers ...



[Understanding Distribution Boxes: A Comprehensive Guide](#)

Dec 20, 2024 · A distribution box is a vital piece of equipment that ensures the effective and safe distribution of electrical power in various parts within a building or complex. It is widely ...



[How Circuit Breakers Protect Power ...](#)

Feb 15, 2025 · Circuit breakers safeguard power distribution systems by detecting faults like overloads and short circuits, ensuring safety, ...



[Substation Circuit Breakers: Ensuring Power Distribution ...](#)

Nov 13, 2024 · This article explores the critical role of substation circuit breakers in safeguarding power distribution systems, enhancing grid reliability, and protecting infrastructure, personnel, ...

[What does a distribution box do?](#)

May 22, 2024 · The distribution box is mainly composed of the following five parts: 1. Main circuit breaker: responsible for controlling the power supply ...



[Power Distribution Box \(DB Box\) Explained](#)

1 day ago · What are the components of a distribution board/ electrical panel? The components of a distribution board / electrical panel, play ...



[Distribution Box Guide: Types, Components](#)

Nov 29, 2024 · Understand distribution boxes (DB boxes) in 5 minutes. Learn about types, components, functions, and uses. Find the perfect DB box ...



[What is an Electrical Distribution Box? A Comprehensive Guide](#)

Oct 24, 2024 · It's recommended to check it annually or whenever you experience issues like frequent tripping. 3. What type of ...

[What is a Power Distribution Box? A Comprehensive Guide ...](#)

Discover the essential role of power distribution boxes in electrical systems. Learn about their functions, types, and applications. Gain a comprehensive understanding of how these devices ...



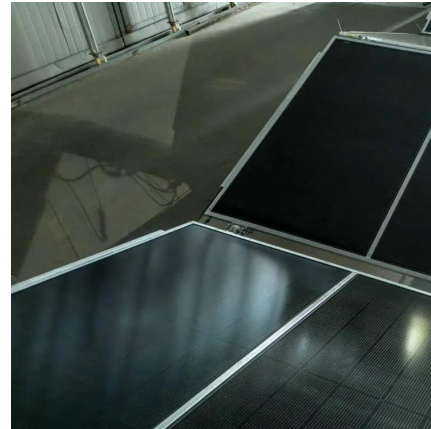
[Basics Of Distribution Substations](#)

Oct 7, 2015 · The basic equipment in distribution substations includes: transformers, circuit breakers, disconnect switches, bus bars, shunt ...



[What does a distribution box do?](#)

May 22, 2024 · The distribution box is mainly composed of the following five parts: 1. Main circuit breaker: responsible for controlling the power supply of the entire system, usually installed at ...



[Functions and Purpose of Circuit Breakers: ...](#)

Feb 25, 2025 · Discover the functions and purpose of circuit breakers. Learn how they protect electrical systems, prevent fire hazards, and ensure ...

[Complete Guide For Distribution Boxes Types](#)

1 day ago · Distribution boxes, also known as electrical distribution boards or panels, are pivotal components in electrical systems, ensuring the safe ...



[Distribution Box Guide: Types, Components & Solutions](#)

Nov 29, 2024 · Understand distribution boxes (DB boxes) in 5 minutes. Learn about types, components, functions, and uses. Find the perfect DB box for your needs.



[What is an Electrical Distribution Box? A Comprehensive Guide](#)

Oct 24, 2024 · It's recommended to check it annually or whenever you experience issues like frequent tripping. 3. What type of distribution box is best for a small business? For small ...



[Circuit Breaker vs Electrical Panel: What are ...](#)

Feb 25, 2025 · Electrical panels, which also means distribution boards or breaker boxes, encloses many circuit breakers. They serve as the main ...

[Substation Circuit Breakers: Ensuring Power ...](#)

Nov 13, 2024 · This article explores the critical role of substation circuit breakers in safeguarding power distribution systems, enhancing grid ...



Contact Us

For technical specifications, project proposals, or partnership inquiries, please visit:
<https://bukhobuhle.co.za>



Scan QR Code for More Information



<https://bukhobuhle.co.za>