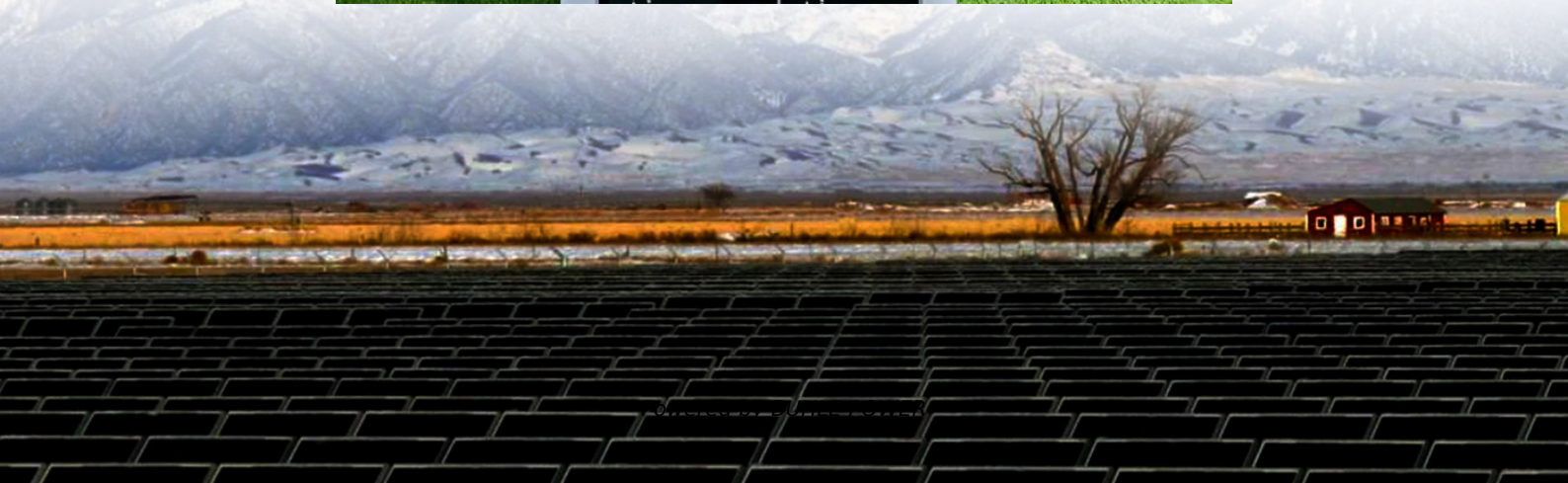


Resorts offer discounts on off-grid solar-powered containers with DC power





Resorts offer discounts on off-grid solar-powered containers with D



[How rising global temperatures impact the tourism industry](#)

Aug 14, 2023 · Tourism is crucial to many economies, but rising global temperatures are putting several holiday hotspots at risk.

[Why the tourism industry must care about a healthy ocean](#)

Oct 16, 2023 · Marine and coastal tourism makes up 50% of the global tourism, so putting a healthy ocean at the heart of decision-making is key for the sector to prosper.



[Shruti Shibulal , World Economic Forum](#)

Shruti Shibulal is Executive Vice Chair and Director of Tamara Leisure Experiences. She strives to make Tamara synonymous with responsible tourism by incorporating principles of

...



[The future of tourism is sustainable and regenerative](#)

Sep 12, 2023 · Sustainability is important to tourists and their hosts. Making sustainable and regenerative tourism a reality requires a mindset shift by travellers.

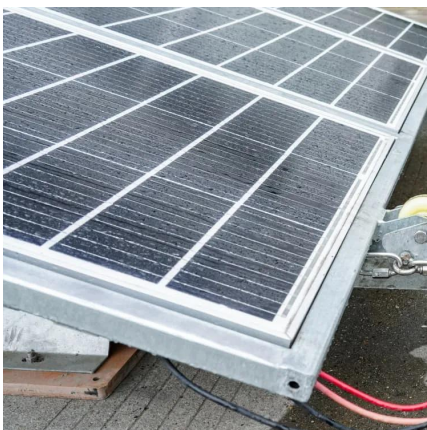


[Iberostar Group , World Economic Forum](#)

May 12, 2020 · Today Iberostar has over 27,100 employees and is divided into three divisions: Iberostar Hotels & Resorts, with over 100 hotels in 18 countries worldwide, Iberostate Golf, ...

[Japan is responding to overtourism, prioritizing communities](#)

May 13, 2025 · Japan is combatting overtourism by promoting regional travel, using tech to ease congestion, and funding local projects for sustainable, community-driven tourism.



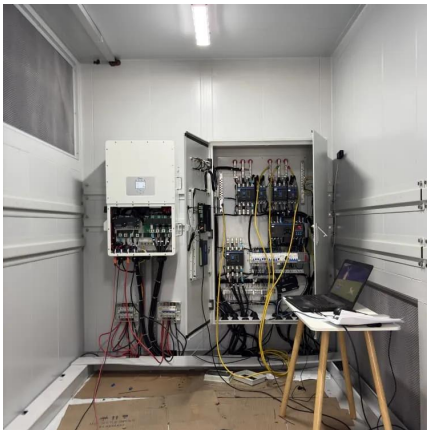
[How can sporting industries adapt to our changing climate?](#)

Aug 12, 2024 · From running marathons at night to moving annual events to different seasons, sporting events are racing to stay ahead of the impacts of climate change.



[Hilton Worldwide , World Economic Forum](#)

Founded in 1919, Hilton (NYSE: HLT) is a global hospitality company comprising 4,700 managed, franchised, owned and leased hotels and timeshare properties with 775,000 rooms in 104 ...



[Walt Disney Company , World Economic Forum](#)

An international family entertainment and media enterprise company founded in 1923, Walt Disney Company has four business segments: Media Networks, including ABC Television ...

Contact Us

For technical specifications, project proposals, or partnership inquiries, please visit:
<https://bukhobuhle.co.za>

Scan QR Code for More Information



<https://bukhobuhle.co.za>