

Sloped roof glass solar shed





Overview

Can you put solar panels on a shed?

Yes, you can—but it depends on your shed. Before you buy any solar panels or mounting kits, take a closer look at your shed's roof. Not all roofs are ready for solar. Start with the basics: is the roof strong enough?

Most solar panels weigh around 15–20 kg each.

How do you mount solar panels on a shed roof?

Run the cables under the panels or along the roof ridge. Use UV-resistant zip ties or cable clips to keep things tidy. Avoid sharp bends or tension on the cables. If you're going through the roof, use a waterproof cable gland. Done right, mounting solar panels on a shed roof isn't complicated.

How much does a shed Solar System cost?

Hiring an installer or electrician can add \$500–1,000+ depending on labor rates in your area. For simple jobs, this may not be necessary. But for grid-connected or larger systems, it's often required by code. So the total cost for a fully installed shed solar setup might range from \$800 to \$2,500 depending on system size and complexity.

Can a shed roof be built like a house roof?

Shed roofs aren't built like house roofs. Installing heavy panels on a weak or damaged structure can lead to sagging—or worse. Check the condition of the rafters and structure before mounting. Reinforce if needed. Stick to lighter panels for small sheds.



Sloped roof glass solar shed



[Structures for sloped roofs for Photovoltaic ...](#)

Photovoltaic structures For sloped roofs
Photovoltaic structures designed for sloped roofs.
We offer comprehensive support and tailored solutions to ...

[How to install solar energy on a sloping roof ...](#)

Sep 6, 2024 · To install solar energy systems on a sloping roof building, one must consider several key factors to achieve optimal efficiency and ...

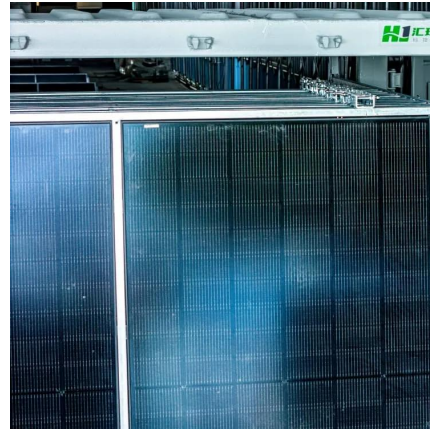


[Solar System Installation For Sloped Roofs](#)

Understanding The Basics of Solar Panel Placement The position and angle of solar panels are crucial for maximizing energy absorption. For sloped roofs, this is easier because they often ...

[How to Choose a Photovoltaic Structure for a ...](#)

3. Roof Tilt Angle The optimal tilt angle for PV panels in Poland is approximately 30°-35°, as this arrangement maximizes solar radiation ...



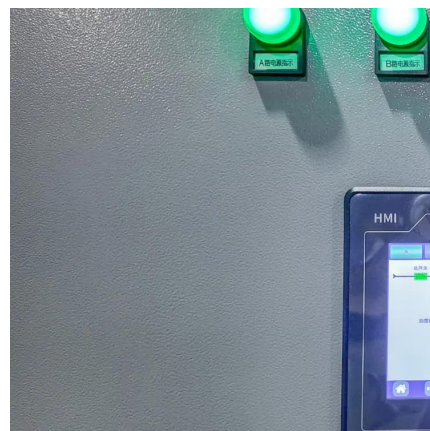
[How to Install Solar Panels on a Sloped Roof: Step-by-Step ...](#)

Learn how to effectively install solar panels on a sloped roof with our detailed guide. Discover the benefits, step-by-step installation process, safety tips, and maintenance advice to maximize ...



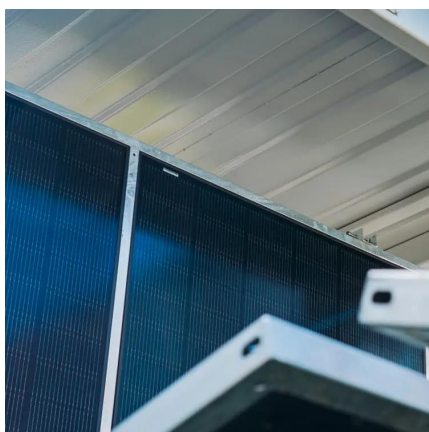
[Can I Put Solar Panels On My Shed Roof?](#)

Aug 12, 2024 · Installing solar panels on a shed roof is a practical way to generate renewable energy, especially for homeowners with limited roof ...



[Build a Strong Sloped Shed Roof with Our Comprehensive ...](#)

Jul 31, 2025 · Learn how to construct a sloped shed roof with our step-by-step guide, covering planning, design, framing, roofing, electrical, plumbing, and ventilation requirements, as well ...





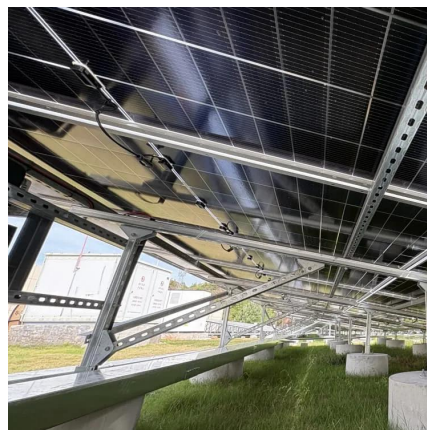
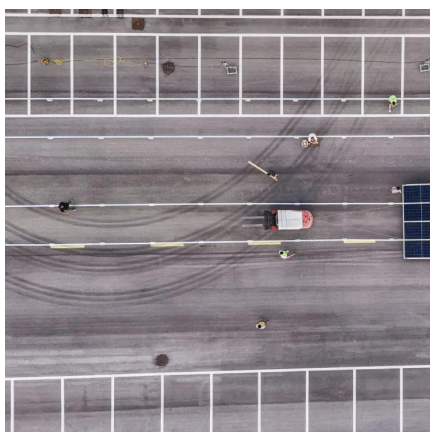
[Can I Put Solar Panels On My Shed Roof?](#)

Aug 12, 2024 · Installing solar panels on a shed roof is a practical way to generate renewable energy, especially for homeowners with limited roof space on their main house. This blog ...



[Structures for sloped roofs for Photovoltaic Panels](#)

Photovoltaic structures For sloped roofs
Photovoltaic structures designed for sloped roofs. We offer comprehensive support and tailored solutions to meet the investor's needs.



[How to Choose a Photovoltaic Structure for a Sloped Roof?](#)

3. Roof Tilt Angle The optimal tilt angle for PV panels in Poland is approximately 30°-35°, as this arrangement maximizes solar radiation throughout the year. If the roof has a different tilt angle, ...



[Complete Guide: How to Install a Solar Panel on a Sloped Roof](#)

Jan 6, 2025 · Looking to install solar panels on a sloped roof? Discover this step-by-step guide on how to install solar panels, key considerations, and tips for a successful installation.



[How to install solar energy on a sloping roof building](#)

Sep 6, 2024 · To install solar energy systems on a sloping roof building, one must consider several key factors to achieve optimal efficiency and performance. 1. Understand the roof ...



[How to Install Solar Panels on a Shed Roof \(DIY Guide\)](#)

Apr 8, 2025 · Learn how to mount solar panels on your shed roof with this complete DIY guide covering system types, roof prep, installation, and wiring tips.

Sloping roof range

3 days ago · In all cases, the roof covering must be of excellent quality. Several options are available, including trapezoidal sheet, sandwich panels and fibre-cement corrugated sheet. In ...



[How to Install Solar Panels on a Shed Roof ...](#)

Apr 8, 2025 · Learn how to mount solar panels on your shed roof with this complete DIY guide covering system types, roof prep, installation, and ...



Contact Us

For technical specifications, project proposals, or partnership inquiries, please visit:
<https://bukhobuhle.co.za>

Scan QR Code for More Information



<https://bukhobuhle.co.za>