

# **Solar container communication station wind and solar complementary installation qualifications**





## Overview

---

Can a multi-energy complementary power generation system integrate wind and solar energy?

Simulation results validated using real-world data from the southwest region of China. Future research will focus on stochastic modeling and incorporating energy storage systems. This paper proposes constructing a multi-energy complementary power generation system integrating hydropower, wind, and solar energy.

What is the maximum integration capacity of wind and solar power?

At this ratio, the maximum wind-solar integration capacity reaches 3938.63 MW, with a curtailment rate of wind and solar power kept below 3 % and a loss of load probability maintained at 0 %. Furthermore, under varying loss of load probabilities, the total integration capacity of wind and solar power increases significantly.

Is a multi-energy complementary wind-solar-hydropower system optimal?

This study constructed a multi-energy complementary wind-solar-hydropower system model to optimize the capacity configuration of wind, solar, and hydropower, and analyzed the system's performance under different wind-solar ratios. The results show that when the wind-solar ratio is 1.25:1, the overall system performance is optimal.

Are multi-energy complementary systems effective in ensuring power supply to the grid?

This validates the effectiveness of multi-energy complementary systems in ensuring power supply to the grid. Additionally, it can be deduced that the ratio of maximum integrable wind and solar capacity to hydropower capacity increases with the increase in hydropower capacity.



## Solar container communication station wind and solar complementa



### [How to integrate wind and solar complementarity in ...](#)

Dec 5, 2025 · A wind-solar hybrid and power station technology, applied in the field of communication, can solve problems such as the difficulty of power supply for communication ...

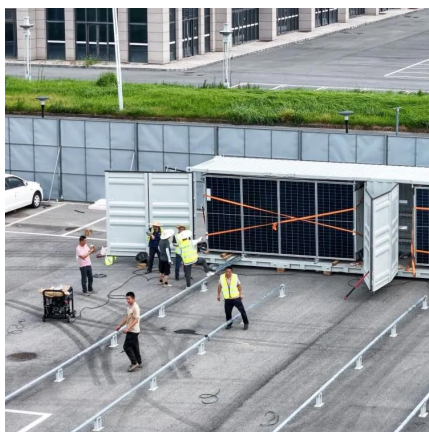
### [Construction of wind and solar complementary ...](#)

Dec 1, 2025 · The successful grid connection of a 54-MW/100-kWp wind-solar complementary power plant in NanâEUR(TM)ao, Guangdong Province, in 2004 was the first windâEUR"solar ...



### [Building wind and solar complementary communication ...](#)

Nov 24, 2025 · Building wind and solar complementary communication base stations  
Optimization Configuration Method of Wind-Solar  
and Dec 18, 2022 · 5G is a strategic resource to ...



### [5kw Wind-Solar Complementary System for Communication Base Station](#)

Apr 4, 2007 · 5kW Hybrid Solar Wind System 1. Pitch controlled technology 2.30% electricity generated more than normal wind generator 3. Tilt up tower, easy installation 4. Mature ...



### [Complementary configuration and operation of Wind-Solar ...](#)

Nov 29, 2024 · With a high percentage of renewable energy systems connected to the grid, the intermittent and volatile nature of their output adversely affects the safe and stable operation of ...



### [Wind-solar hybrid for outdoor communication base ...](#)

4 days ago · Integrated Solar-Wind Power Container for Communications This large-capacity, modular outdoor base station seamlessly integrates photovoltaic, wind power, and energy ...



### [Optimal Design of Wind-Solar complementary power ...](#)

Dec 15, 2024 · This paper proposes constructing a multi-energy complementary power generation system integrating hydropower, wind, and solar energy. Considering capa...







### [Communication base station wind and solar ...](#)

Nov 21, 2025 · The wind-solar-diesel hybrid power supply system of the communication base station is composed of a wind turbine, a solar cell module, an integrated controller for hybrid ...



### [An in-depth study of the principles and technologies of wind-solar](#)

Jul 26, 2024 · Through the analysis of technological innovation and system optimization strategies, this study explores ways to enhance system performance and economy by relying ...

### [Huatong Yuanhang's wind-solar complementary system for ...](#)

Jun 13, 2024 · Based on the complementarity of wind energy and solar energy, the base station wind-solar complementary power supply system has the advantages of stable power supply, ...



## Contact Us

For technical specifications, project proposals, or partnership inquiries, please visit:  
<https://bukhobuhle.co.za>



## Scan QR Code for More Information



<https://bukhobuhle.co.za>