

Solar container outdoor power discharges to 0





Overview

When does a solar battery charge & discharge?

The battery will only* charge when the solar is producing more energy than the loads are consuming. The battery will only* discharge when the loads are consuming from the grid. When the battery charge falls below the minimum allowable SOC set by the BMS, the battery will be force charged from the grid until the SOC reaches the minimum.

Why does my solar battery discharge to the grid?

Solar battery discharge to the grid occurs for several reasons. Knowing these reasons helps you manage your solar system effectively. Your solar battery might not store enough energy if its capacity is too low. This limitation leads to energy overflow, resulting in discharge to the grid.

What is a solar energy container?

Comprising solar panels, batteries, inverters, and monitoring systems, these containers offer a self-sustaining power solution. Solar Panels: The foundation of solar energy containers, these panels utilize photovoltaic cells to convert sunlight into electricity. Their size and number vary depending on energy requirements and sunlight availability.

Are solar energy containers a beacon of off-grid power excellence?

Among the innovative solutions paving the way forward, solar energy containers stand out as a beacon of off-grid power excellence. In this comprehensive guide, we delve into the workings, applications, and benefits of these revolutionary systems.



Solar container outdoor power discharges to 0

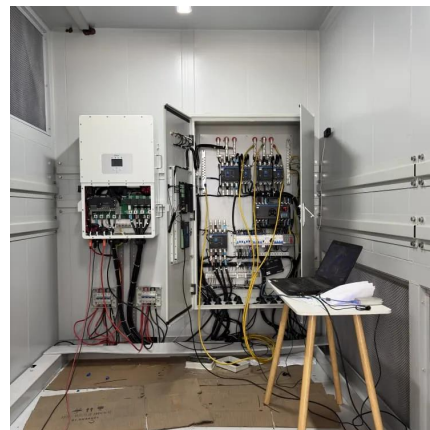


[How to Fix Solar Battery Over Discharge: Essential Steps to ...](#)

Dec 25, 2024 · Is your solar battery discharging too quickly? Discover how to identify and fix solar battery over discharge in our comprehensive guide. Learn the symptoms, causes, and ...

[Why Your Solar Battery May Be Draining Too Fast](#)

Nov 13, 2024 · If your solar battery is draining too quickly, it might be a result of improper charging habits, charge controller issues, or inefficient power usage. Solar batteries are designed to ...



[Solar Panel Voltage Explained: Output & Regulation Guide](#)

1 day ago · Solar panels convert sunlight into usable electrical energy -- but to truly understand how that energy flows, you need to grasp one fundamental concept: voltage. Voltage ...



[Why is my PV system discharging to the grid when my ...](#)

6 days ago · For that reason, when there are only a few hundred watts of excess power from the solar PV system this will be exported to the grid rather than be stored in the battery.



[When will the battery charge and discharge? How do I...](#)

How do I control this? Charging By default, your battery will charge from excess solar power. That is: Whenever the solar generation exceeds the load, rather than exporting to the grid, the ...



[Is there a setting I can use so that my battery charges during...](#)

Is there a setting I can use so that my battery charges during the day from solar, then discharges to power ONLY my house in the evening and overnight from the battery? Rather than (very ...



UNLOCKING OFF-GRID POWER: THE ULTIMATE GUIDE TO SOLAR ENERGY CONTAINERS

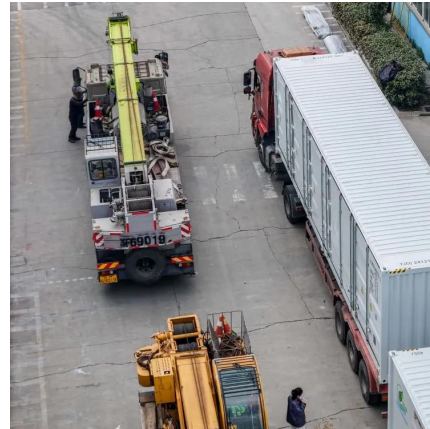
May 11, 2024 · Conclusion Solar energy containers epitomize the pinnacle of sustainable energy solutions, offering a plethora of benefits across diverse applications. From their renewable ...





[Why Does My Solar Battery Discharge to the Grid and How ...](#)

Dec 27, 2024 · Understanding why your solar battery discharges to the grid can help you take control of your energy use. By recognizing factors like system design and energy consumption ...



[Outdoor Power Supply Capacity Loss Calculation Key Factors ...](#)

SunContainer Innovations - Summary: Understanding capacity loss in outdoor power systems is critical for optimizing energy storage. This guide explores calculation methods, real-world data, ...

[Is there a setting I can use so that my battery ...](#)

Is there a setting I can use so that my battery charges during the day from solar, then discharges to power ONLY my house in the evening and ...



[Why does my battery discharge to the grid, or charge ...](#)

5 days ago · Discharging: The battery will only normally discharge when the energy meter senses power coming from the grid (and there is charge available in the battery).



Contact Us

For technical specifications, project proposals, or partnership inquiries, please visit:
<https://bukhobuhle.co.za>

Scan QR Code for More Information



<https://bukhobuhle.co.za>