

The components of the wind and solar complementary wireless solar container communication station include





Overview

Can a multi-energy complementary power generation system integrate wind and solar energy?

Simulation results validated using real-world data from the southwest region of China. Future research will focus on stochastic modeling and incorporating energy storage systems. This paper proposes constructing a multi-energy complementary power generation system integrating hydropower, wind, and solar energy.

What are the complementary characteristics of wind and solar energy?

The complementary characteristics of wind and solar energy can be fully utilized, which better aligns with fluctuations in user loads, promoting the integration of wind and solar resources and ensuring the safe and stable operation of the system. 1. Introduction.

Are multi-energy complementary systems effective in ensuring power supply to the grid?

This validates the effectiveness of multi-energy complementary systems in ensuring power supply to the grid. Additionally, it can be deduced that the ratio of maximum integrable wind and solar capacity to hydropower capacity increases with the increase in hydropower capacity.

Is a multi-energy complementary wind-solar-hydropower system optimal?

This study constructed a multi-energy complementary wind-solar-hydropower system model to optimize the capacity configuration of wind, solar, and hydropower, and analyzed the system's performance under different wind-solar ratios. The results show that when the wind-solar ratio is 1.25:1, the overall system performance is optimal.



The components of the wind and solar complementary wireless solar



[Construction of wind and solar complementary ...](#)

Dec 1, 2025 · The successful grid connection of a 54-MW/100-kWp wind-solar complementary power plant in NanâEUR(TM)ao, Guangdong Province, in 2004 was the first windâEUR"solar ...

[Communication base station wind and solar ...](#)

Nov 27, 2025 · The wind-solar-diesel hybrid power supply system of the communication base station is composed of a wind turbine, a solar cell module, an integrated controller for hybrid ...



[Globally interconnected solar-wind system addresses future ...](#)

May 15, 2025 · A globally interconnected solar-wind power system can meet future electricity demand while lowering costs, enhancing resilience, and supporting a stable, sustainable ...

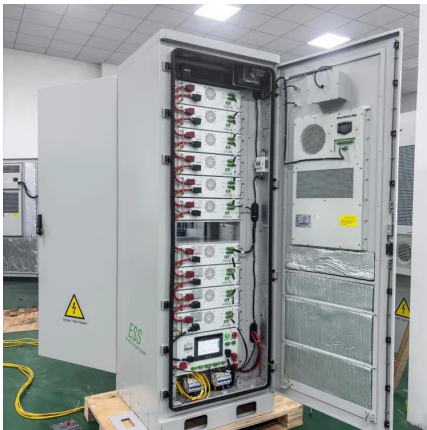
[Assessing the potential and complementary characteristics ...](#)

Aug 15, 2025 · By calculating the Kendall rank correlation coefficient between wind and solar energy in China, the study mapped the spatial distribution of wind-solar energy ...



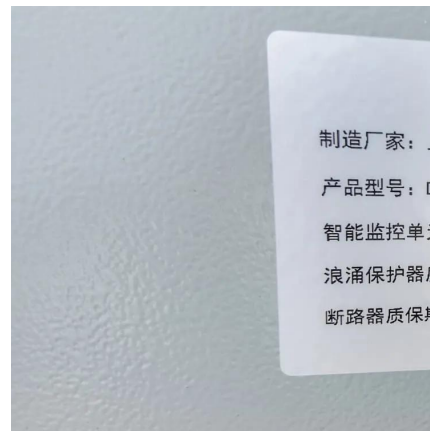
5kw Wind-Solar Complementary System for Communication Base Station

Apr 4, 2007 · 5kW Hybrid Solar Wind System 1. Pitch controlled technology 2.30% electricity generated more than normal wind generator 3. Tilt up tower, easy installation 4. Mature ...



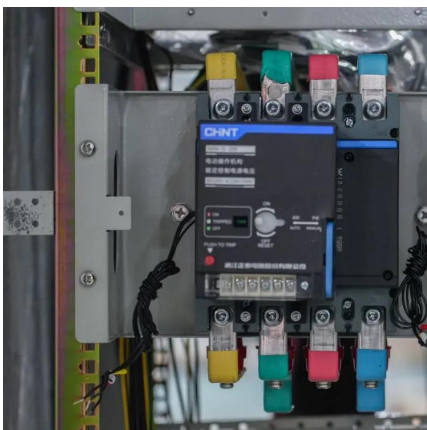
Wind-solar complementary energy supply ...

Jul 18, 2018 · A new UAV wireless power supply platform of wind-solar complementary type is proposed. The wind and solar power generation ...



Solar and Wind Hybrid Power System . TuQian Wireless

The solar and wind power complementary system achieves 24-hour efficient and stable power supply through intelligent coordination of photovoltaic and wind power. It is a zero-carbon ...





[Globally interconnected solar-wind system ...](#)

May 15, 2025 · A globally interconnected solar-wind power system can meet future electricity demand while lowering costs, enhancing resilience, and ...



[Ranking of domestic global communication base station wind and solar](#)

Traditionally powered by coal-dominated grid electricity, these stations contribute significantly to operational costs and air pollution. This study offers a comprehensive roadmap for low-carbon ...

[Wind-solar complementary energy supply platform based on](#)

Jul 18, 2018 · A new UAV wireless power supply platform of wind-solar complementary type is proposed. The wind and solar power generation devices, energy storage devices and UAV ...



[Optimal Design of Wind-Solar complementary power ...](#)

Dec 15, 2024 · The results indicate that a wind-solar ratio of around 1.25:1, with wind power installed capacity of 2350 MW and photovoltaic installed capacity of 1898 MW, results in ...



[Design of a Wind-Solar Complementary Power Generation ...](#)

Apr 27, 2025 · In order to improve the utilization efficiency of wind and photovoltaic energy resources, this paper designs a set of wind and solar complementary power generation ...



Contact Us

For technical specifications, project proposals, or partnership inquiries, please visit:
<https://bukhobuhle.co.za>

Scan QR Code for More Information



<https://bukhobuhle.co.za>