

The optical communication equipment in the base station includes





Overview

What are the components of a base station?

The base station will have one or more RF antennas installed to transmit and receive RF signals from other devices. The block diagram of a base station typically includes the following key components: Baseband Processor: The baseband processor too deals with different communication protocols and interfaces with mobile network infrastructure.

What is a base transceiver station?

A Base Transceiver Station comprises various components that work cohesively to establish and maintain communication with mobile devices. These components handle everything from signal processing and transmission to power management and network interfacing, ensuring seamless connectivity and optimal network performance.

Why are base stations important in cellular communication?

Base stations are important in the cellular communication as it facilitate seamless communication between mobile devices and the network communication. The demand for efficient data transmission are increased as we are advancing towards new technologies such as 5G and other data intensive applications.

What are the different types of base stations?

Some basic types of base stations are as follows: Macro-base stations are tall towers ranging from 50 to 200 feet in height, placed at strategic locations to provide maximum coverage in a given area. Those are equipped with large towers and antennas that transmit and receive radio signals from wireless devices.



The optical communication equipment in the base station includes



[Baseband Units and Optical Transport , TE Connectivity](#)

Dec 3, 2025 · Our base station and optical transport connectivity solutions address the demands of the always-on edge of expanding wireless infrastructure.

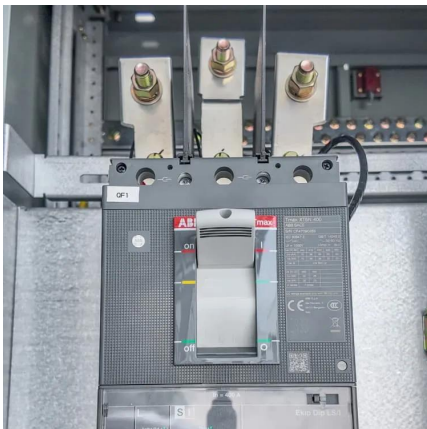
[Orientation Program Optical Fibre Communication For ...](#)

Nov 10, 2023 · Base Station (BS) - A base station transmits and receives user data. When a mobile is only responsible for its user's data transmission and reception, a base station is ...



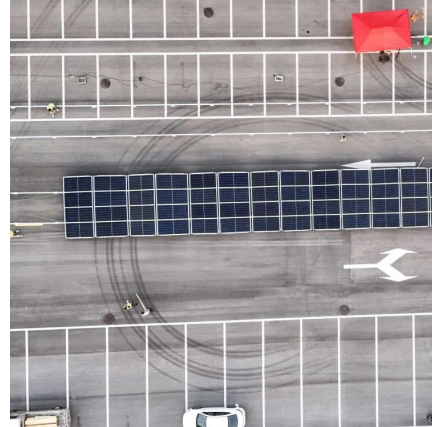
[IRIS, optical ground station for space laser communications](#)

2 days ago · IRIS optical ground station Designed and developed entirely in-house, Safran Data Systems' IRIS optical ground station is equipped with state-of-the-art telescopes and optronic ...



Base Stations

Jul 23, 2025 · What is Base Station? A base station represents an access point for a wireless device to communicate within its coverage area. It usually connects the device to other ...



[Baseband Units and Optical Transport , TE...](#)

Dec 3, 2025 · Our base station and optical transport connectivity solutions address the demands of the always-on edge of expanding wireless ...



[HISILICON Optical Modules in the field of communication base stations](#)

Jan 12, 2025 · A base station usually consists of an antenna, an equipment room, a base station (logically divided into two parts: the bbu, which is responsible for signal processing, and the ...



[Do you know where the optical module is used in the base station?](#)

Jul 23, 2025 · The communication triangle tower is composed of antenna, machine room, base station, feeder and supporting equipment. The antenna is on the top of the triangle tower, and ...





[Do you know how optical modules are used in base stations?](#)

Mar 17, 2025 · The communication triangle tower must be familiar to everyone. In this article, Nufier will introduce the base station under the communication triangle tower and the ...



[Do You Know How Optical Modules Are Used In Base Stations...](#)

Jan 26, 2022 · In this article, ETU-LINK will introduce the base station under the communication triangle tower and the application of optical modules in the base station. The communication ...

[base transceiver station components](#)

Dec 22, 2023 · A Base Transceiver Station comprises various components that work cohesively to establish and maintain communication with mobile devices. These components handle ...



[base transceiver station components](#)

Dec 22, 2023 · A Base Transceiver Station comprises various components that work cohesively to establish and maintain communication with mobile ...



[Home](#) [Shanghai BAOSH Communications Equipment Co., Ltd](#)

Optical communication instruments and tools are important components of optical fiber communication equipment, and also indispensable components in the field of optical fiber ...



Contact Us

For technical specifications, project proposals, or partnership inquiries, please visit:
<https://bukhobuhle.co.za>

Scan QR Code for More Information



<https://bukhobuhle.co.za>