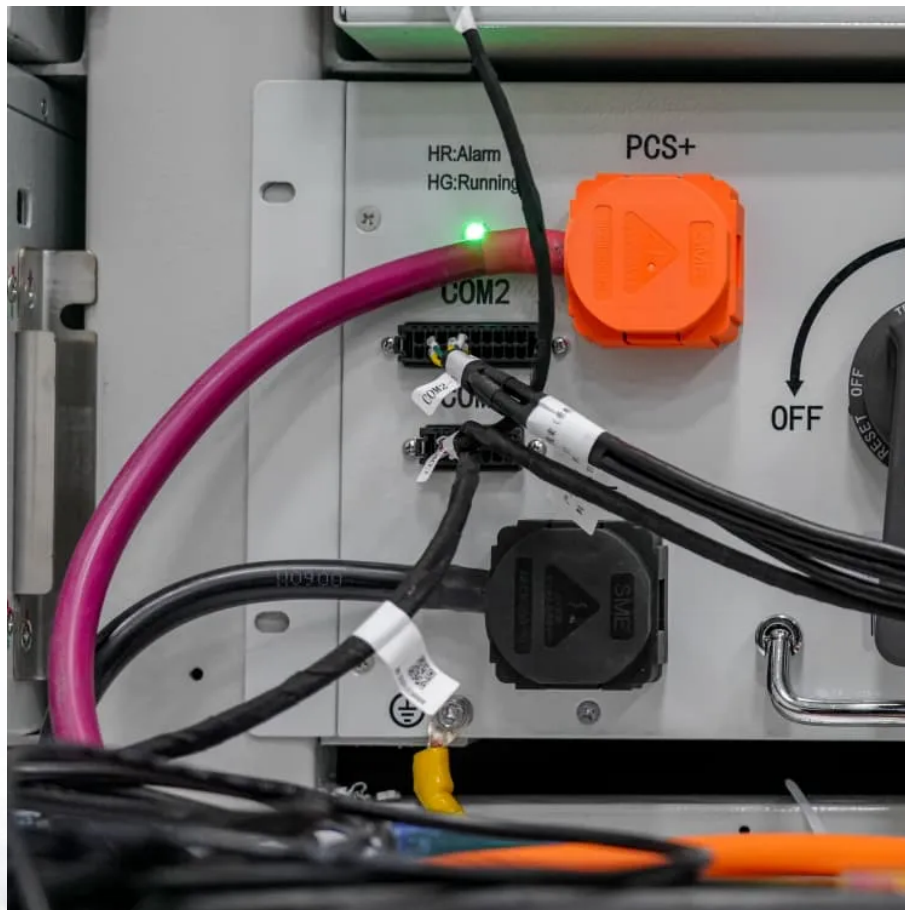


The safe distance between energy storage power station and substation





Overview

Is there a safe distance from an electrical substation?

Ultimately, there's no one-size-fits-all safe distance from an electrical substation. Thus, understanding potential risks and influencing factors is essential. Therefore, informed decisions based on individual circumstances are crucial. Finally, whether using guidelines, surveys, or other measures, prioritize your safety.

How far should a substation be from a house?

Thirdly, while a universally accepted safe distance doesn't exist, guidelines are available. Specifically, in the UK, the National Grid recommends a minimum of 2-10 metres for homes and small buildings depending on the size and the type of the substation. Also, 30 metres is advised for sensitive facilities like schools and hospitals.

What factors affect a safe distance from an electrical substation?

Secondly, several factors influence the safe distance from an electrical substation. Therefore, these include the substation's type and size, its electricity handling capacity, and your home's proximity. Then, generally, larger substations with higher voltage pose greater potential EMF exposure risks.

How long should a substation be?

Specifically, in the UK, the National Grid recommends a minimum of 2-10 metres for homes and small buildings depending on the size and the type of the substation. Also, 30 metres is advised for sensitive facilities like schools and hospitals. Furthermore, these guidelines offer a starting point for assessing safety.



The safe distance between energy storage power station and subst



SPACING CONSIDERATIONS BETWEEN SUBSTATION ...

Sep 25, 2022 · Abstract - Substation buildings exist at every petrochemical facility; located at the incoming power high-voltage substation or switchyard through all levels of distribution ...

What is a safe distance to live from an ...

Apr 24, 2023 · The safe distance to live from an electrical substation is 75 meters for homes and 300 meters for schools, hospitals and other facilities.



How to Maintain a Safe Distance from the ...

Jun 3, 2025 · For the general public, understanding how to maintain a safe distance from the substation is paramount to safeguarding life and ...



How to Maintain the Electrical Substation Safety Distance ...

The distance between the substation and the residential area should be of minimum 100 yard or 300 feet. 11 kV feeder lines from the transformer enters into the distribution substation which is ...



[Effect of Safety Regulations and Safe Working Practices on Substation](#)

Jul 21, 2018 · The "safety distance" means the minimum distance to be maintained in air between the live piece of equipment or conductor, on the one hand, and the earth or another piece of ...



[Jiangsu issues safety standards for user-side energy storage](#)

Jun 19, 2025 · Changzhou Local Standard: This standard specifies the minimum safety distances between different types of energy storage power stations and risk areas. For example, the ...



Essential Safety Distances for Large-Scale Energy Storage Power Stations

Mar 18, 2025 · Discover the key safety distance requirements for large-scale energy storage power stations. Learn about safe layouts, fire protection measures, and optimal equipment ...





[How to Maintain a Safe Distance from the Substation?](#)

Jun 3, 2025 · For the general public, understanding how to maintain a safe distance from the substation is paramount to safeguarding life and property. This article will delve into the safety ...



[How to Maintain the Electrical Substation ...](#)

The distance between the substation and the residential area should be of minimum 100 yard or 300 feet. 11 kV feeder lines from the transformer ...



[What is a safe distance to live from an electrical substation?](#)

Apr 24, 2023 · The safe distance to live from an electrical substation is 75 meters for homes and 300 meters for schools, hospitals and other facilities.



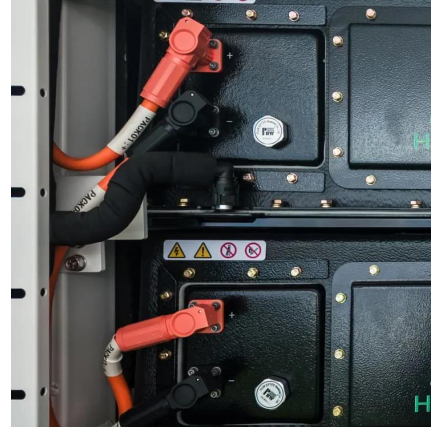
Distance requirements between energy storage power station and substation

This article provides a comprehensive guide on battery storage power station (also known as energy storage power stations). These facilities play a crucial role in modern power grids by ...



Safe distance between electrochemical energy storage power station ...

The minimum distance, known as a "safety distance", is calculated with regards to the characterisation of the substation components and other factors that consider the operator's ...

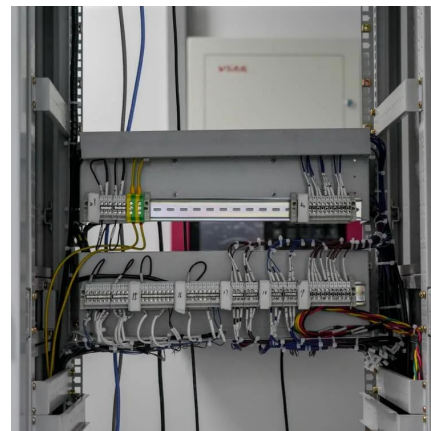


What is the explosion-proof distance of the ...

Sep 19, 2024 · Understanding the material composition of the energy storage system lays the groundwork for establishing explosion-proof distance and ...

What is the explosion-proof distance of the energy storage power station?

Sep 19, 2024 · Understanding the material composition of the energy storage system lays the groundwork for establishing explosion-proof distance and overall safety protocols. The ...



Contact Us

For technical specifications, project proposals, or partnership inquiries, please visit:
<https://bukhobuhle.co.za>



Scan QR Code for More Information



<https://bukhobuhle.co.za>