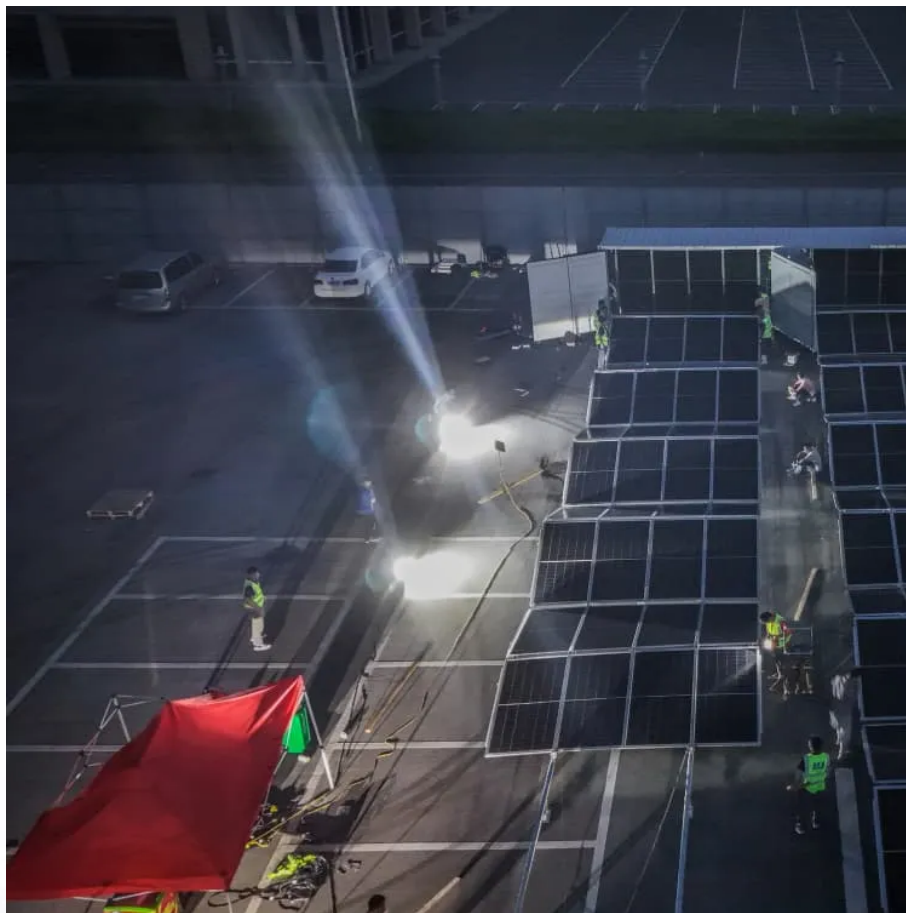


Three-phase voltage type pwm inverter





Overview

What is a 3 phase PWM inverter?

Three-phase PWM inverters have a similar operating principle to single-phase inverters but use six power switches arranged in three legs. The control unit generates three separate PWM signals, one for each phase. These signals are used to control the switching of the IGBTs to produce three-phase AC power.

What are the different types of PWM inverters?

PWM inverters can be broadly categorized into single-phase and three-phase types, each with distinct structures and applications. Single-phase PWM inverters consist of two main parts, the DC power source and the inverter bridge, typically use a full-bridge configuration consisting of four power switches, usually IGBTs and MOSFETs.

What are IGBT-based generalized discontinuous PWM modulation schemes in three-phase inverters?

IGBT-based generalized discontinuous PWM modulation schemes in three-phase inverters required to generate either balanced or unbalanced three-phase voltage set. We have generalized and clarified the methods for arriving at the modulation schemes of converters in the process of which several known modulation scheme have been developed.

What is a PWM inverter?

What is a PWM Inverter and How PWM Inverters Work?

A PWM (Pulse Width Modulation) Inverter is a device that converts direct current (DC) to alternating current (AC) by modulating the width of the pulses in the output signal. It generates a series of pulses with varying widths to create an AC waveform that closely approximates a sine wave.



Three-phase voltage type pwm inverter



[What is a PWM Inverter: Types and ...](#)

Jul 15, 2024 · Explore what is PWM inverter, including single-phase and three-phase types. Learn more about the key advantages of PWM ...

[A New SVPWM for a Hybrid-Level Three-Phase Inverter for ...](#)

Dec 4, 2024 · This article proposes a new space vector pulse width modulation (SVPWM) technique for a hybrid-level three-phase inverter. The new SVPWM minimizes the root mean ...



[3-Phase PWM Power Inverter Circuit](#)

The inverter design circuit adopts voltage three-phase bridge inverter circuit, its schematic diagram shown in figure 3. Inverter circuit switching devices ...



[DC-AC 3-phase Inverter](#)

Oct 21, 2025 · This example shows a three-phase voltage source inverter with a sine Pulse Width Modulation (PWM) and the influence of the switching frequency on waveforms and frequency ...



[UG0655: Three-phase PWM User Guide](#)

Jun 12, 2024 · The three-phase PWM generates carrier based center aligned PWM to trigger the switches of a three-phase inverter. The module also introduces a configurable dead time to ...



[A Comparative Study of Performed SV PWM Three Phase Inverters](#)

Nov 6, 2024 · Multilevel inverters are widely used in high-power high-voltage applications due. There are four types of MLIs are present namely, Diode Clamped, Flying Capacitor, cascaded ...



[Pulse Width Modulation \(PWM\) Techniques](#)

By offering a fundamental component that is around 15.5% greater than that of sinusoidal PWM, third-harmonic PWM offers superior dc supply voltage consumption than sinusoidal PWM. ...





[What is a PWM Inverter: Types and Applications](#)

Jul 15, 2024 · Explore what is PWM inverter, including single-phase and three-phase types. Learn more about the key advantages of PWM technology, like Hinen inverters are used for ...

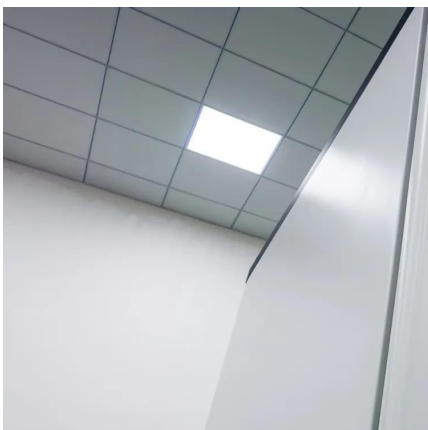
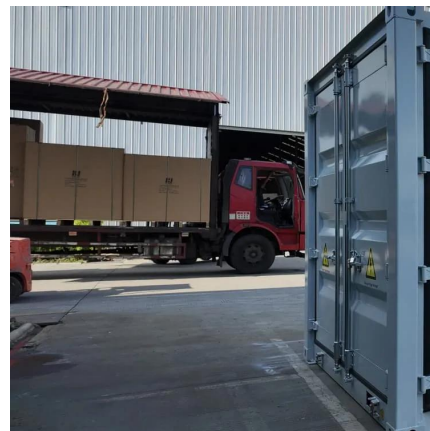


[3-Phase PWM Power Inverter Circuit](#)

The inverter design circuit adopts voltage three-phase bridge inverter circuit, its schematic diagram shown in figure 3. Inverter circuit switching devices are made of full-controlled device ...

[Phase disposition PWM control topology based: A novel...](#)

Nov 15, 2024 · In this work paper, a novel three-phase 3-Level MLI is proposed evading the usage of clamping diodes and quadratic switches. Additionally, phase disposition pulse width ...



[Design and implementation of single DC-link based three-phase](#)

Aug 5, 2024 · This inverter uses only 15 switches to build a three-phase system and only one dc link. So, ultimately cost and inverter size is greatly reduced.



[The Generalized Discontinuous PWM Scheme for Three ...](#)

Oct 16, 2014 · Olorunfemi Ojo, Senior Member, IEEE Abstract--This paper presents analytical techniques for the determination of the expressions for the modulation signals used in the ...



Contact Us

For technical specifications, project proposals, or partnership inquiries, please visit:
<https://bukhobuhle.co.za>

Scan QR Code for More Information



<https://bukhobuhle.co.za>