

What is the difference between 5g indoor and outdoor base stations





Overview

What is 5G outdoor to indoor coverage?

5G outdoor to indoor coverage refers to the ability of 5G networks to maintain strong connectivity as signals transition from outdoor environments into buildings. This aspect of 5G is crucial for ensuring uninterrupted service as users move indoors. Signal penetration is a key factor, as 5G waves must navigate obstacles such as walls and furniture.

How can a 5G network improve indoor coverage?

To enhance indoor coverage, several solutions are being implemented. **Small Cells:** These are low-power nodes that improve coverage and capacity within buildings, especially in high-density areas. **Signal Repeaters:** Devices that amplify 5G signals to extend reach within indoor environments.

Should 5G base stations be tripled?

To cover the same area as traditional cellular networks (2G, 3G, and 4G), the number of 5G base stations (BSs) could be tripled (Wang et al., 2014). Furthermore, Ge, Tu, Mao, Wang, and Han, (2016) suggested that to achieve seamless coverage services, the density of 5G BSs would reach 40-50 BSs/km².

Can 5G be used for indoor positioning?

In summary, 5G is a promising technology, but it currently cannot be used at scale for indoor positioning inside buildings due to technological limitations and high deployment costs. Can 5G be used for indoor localization and tracking?

As indoor positioning technologies have improved, so have the requirements for businesses looking to use them.



What is the difference between 5g indoor and outdoor base stations



[5G CPE Outdoor vs. Indoor vs. Traditional Broadband: Which ...](#)

We'll compare three main contenders: the Outdoor 5G CPE, the Indoor 5G CPE, and traditional Fixed-Line Broadband (like fiber or cable). Speed and Performance: Traditional fiber-optic ...

[Indoor vs Outdoor CPE: Which is best? , Solace Power](#)

Jun 6, 2024 · LINXC seamlessly integrates the benefits of both indoor and outdoor CPE. It enables power and data delivery through windows, allowing for flexible indoor-outdoor ...



[4G LTE/5G Fixed Wireless: Indoor Gateway vs. Outdoor ...](#)

Sep 1, 2025 · This guide breaks down how SimpliUnlimited captures 4G LTE and 5G wireless signals to bring high-speed, unlimited internet straight to your door: Outdoor 4G LTE/5G Fixed ...

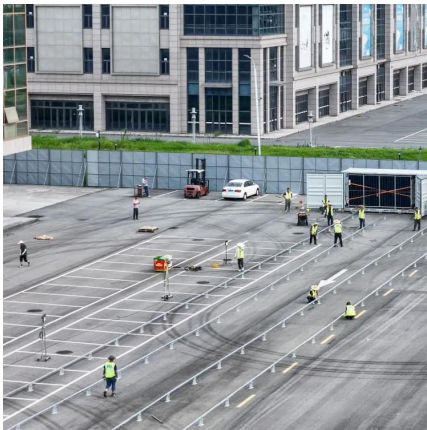
[Understanding 5G Outdoor to Indoor Coverage: A ...](#)

Jan 11, 2025 · What is 5G Outdoor to Indoor Coverage? 5G outdoor to indoor coverage refers to the ability of 5G networks to maintain strong connectivity as signals transition from outdoor ...



[The pros and cons of 5G for indoor positioning](#)

Jan 21, 2023 · This diagram shows the difference of coverage between mmWave 5G base stations and lower-band base stations. The limitations of mmWave 5G make it best suited for ...



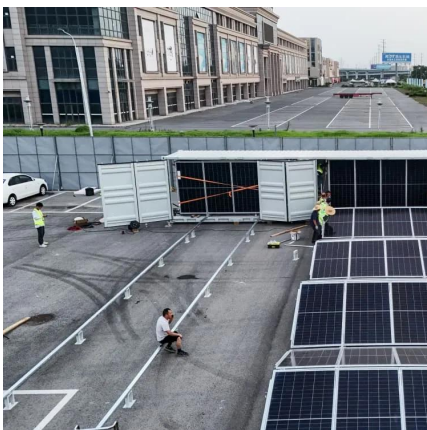
[Optimizing the ultra-dense 5G base stations in urban outdoor ...](#)

Dec 1, 2020 · The only difference between experiments E1 and E2 is that experiment E2 does not consider the LOS effect in the propagation of 5G signals. Therefore, as long as a base station ...



[Types of 5G NR Base Stations: A ...](#)

Apr 30, 2025 · The evolution of 5G NR base stations has paved the way for enhanced connectivity, higher data speeds, and improved network ...





[What Is 5G Outdoor-To-Indoor Coverage? - Wray Castle](#)

Oct 31, 2024 · The benefits of 5G outdoor-to-indoor coverage are numerous. For one, it allows users to seamlessly transition between outdoor and indoor environments without experiencing ...



[Types of 5G NR Base Stations: A Comprehensive Overview](#)

Apr 30, 2025 · The evolution of 5G NR base stations has paved the way for enhanced connectivity, higher data speeds, and improved network efficiency. Each type of base station ...



[5g base stations are divided into indoor and outdoor](#)

6 days ago · In urban deployments, the majority of mobile traffic is usually indoors, which is difficult to serve from outdoor base stations due to radio signal attenuation through walls and ...



[Indoor vs Outdoor LTE Deployment: Best Practices & Smart...](#)

Nov 26, 2025 · In this guide, we'll explore the key differences between indoor Routers and outdoor LTE deployment. We'll cover architecture, signal propagation, hardware, planning ...





Contact Us

For technical specifications, project proposals, or partnership inquiries, please visit:
<https://bukhobuhle.co.za>

Scan QR Code for More Information



<https://bukhobuhle.co.za>