

What is the formula for calculating the power of the battery cabinet





Overview

How do you calculate battery capacity?

The basic formula for calculating the capacity of a battery is to multiply the voltage by the current and then by the time. The formula is as follows: Where: Capacity is the battery's capacity in ampere-hours (Ah). Voltage is the battery's voltage in volts (V). Current is the battery's current in amperes (A).

What unit is used to measure battery capacity?

The unit commonly used to measure battery capacity is the ampere-hour (Ah) or its subunit i.e., milliampere-hour (mAh). Other than these two units higher capacity batteries are measured in watt hour or kilowatt hour. Ampere-hour (Ah): This unit of battery capacity represents how much current battery can provide for 1 hour.

How is energy stored in a battery calculated?

The energy stored in a battery is calculated by multiplying the voltage of the battery by the capacity of the battery in ampere-hours. For example, a battery with a capacity of 1000 mAh and a voltage of 3.7 volts would have an energy storage capacity of 3.7 watt-hours (Wh).

What is battery capacity?

Battery capacity tells you how much energy a battery can store and deliver over time. It's usually expressed in: To calculate how much energy a battery holds in watt-hours, use: If your battery capacity is in mAh (milliamps), convert it to Ah first: You have a 12V battery rated at 100Ah. So it stores 1200 watt-hours of energy.



What is the formula for calculating the power of the battery cabinet



[Battery Capacity Calculator , True Geometry's Blog](#)

Mar 7, 2025 · Calculation Example: This calculator helps determine the required battery capacity (in Ampere-hours, Ah) and energy (in Watt-hours, Wh) to power a device for a specified ...

Battery Capacity

Jul 23, 2025 · Ampere-hour (Ah): This unit of battery capacity represents how much current battery can provide for 1 hour. For example, a battery with a capacity of 2 Ah, can provide a 2 ...



[Guide to Calculating Watts, Volts, and Amps](#)

Apr 15, 2025 · Learn how to calculate watts, volts, and amps for lithium batteries with simple formulas and examples, ideal for EVs, solar, and ...



[The power calculation formula of the battery cabinet is](#)

The fundamental formula used in calculating battery capacity is $E = V * Q$, where E represents the energy in watt-hours, V is the voltage, and Q is the capacity in amp-hours.



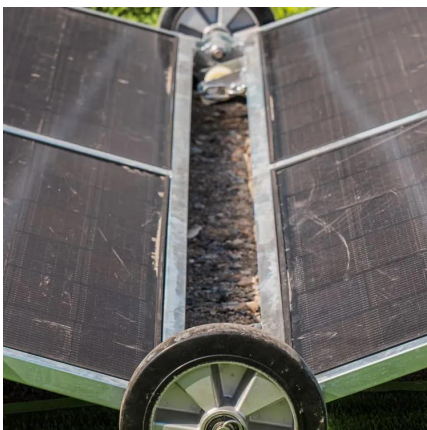
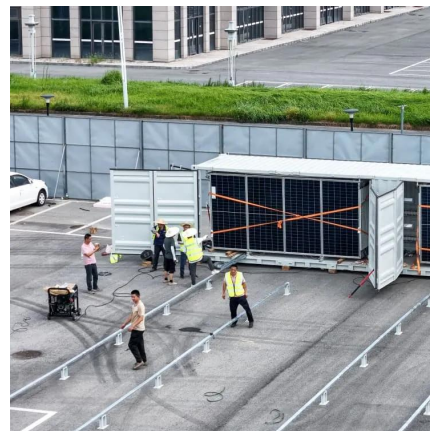
[How to Calculate Battery Capacity \(Ah, mAh, ...\)](#)

Apr 25, 2025 · When you're building a solar system, sizing a power bank, or choosing a backup battery for your gadgets -- understanding battery ...



[Guide to Calculating Watts, Volts, and Amps](#)

Apr 15, 2025 · Learn how to calculate watts, volts, and amps for lithium batteries with simple formulas and examples, ideal for EVs, solar, and energy systems.



Battery Capacity

Jul 23, 2025 · Ampere-hour (Ah): This unit of battery capacity represents how much current battery can provide for 1 hour. For example, a battery with a ...



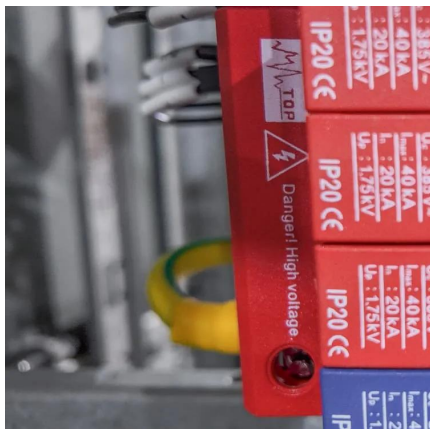
[How to Calculate Battery Capacity \(Ah, mAh, and Watt-hours ...](#)

Apr 25, 2025 · When you're building a solar system, sizing a power bank, or choosing a backup battery for your gadgets -- understanding battery capacity is key. This guide will explain what ...



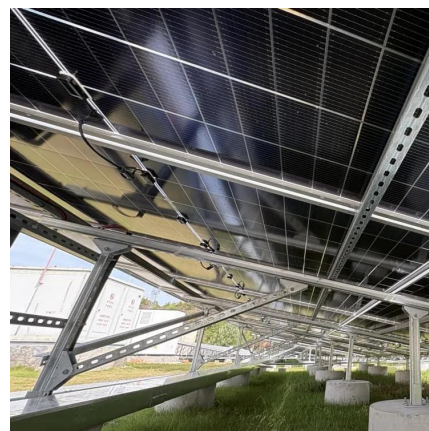
[How to calculate the battery cabinet occupied by single ...](#)

Hours Before we begin, we need to derive our useful equation. Let's determine our battery calculation formula with the definition of battery capacity: begin{equation} text{Battery Capacity ...



[Battery Capacity Calculator](#)

The primary function of a battery is to store energy. We usually measure this energy in watt-hours, which correspond to one watt of power sustained for one hour. If we want to calculate how ...



[Battery Load Calculation](#)

Mar 18, 2025 · Battery Energy (Wh) = Battery Capacity (Ah) × Voltage (V) This formula converts the battery capacity from ampere-hours to watt-hours (Wh), offering a comprehensive view of ...



[How To Calculate Battery Capacity?](#)

Feb 21, 2025 · Calculating battery capacity is essential for determining how long a battery can power a device before needing a recharge. This is done using the formula: For example, if a ...



[The power calculation formula of the battery cabinet is](#)

The higher the capacity, the longer the battery can provide power. The basic formula for calculating battery capacity is straightforward and requires two pieces of information: the ...

Contact Us

For technical specifications, project proposals, or partnership inquiries, please visit:
<https://bukhobuhle.co.za>

Scan QR Code for More Information



<https://bukhobuhle.co.za>