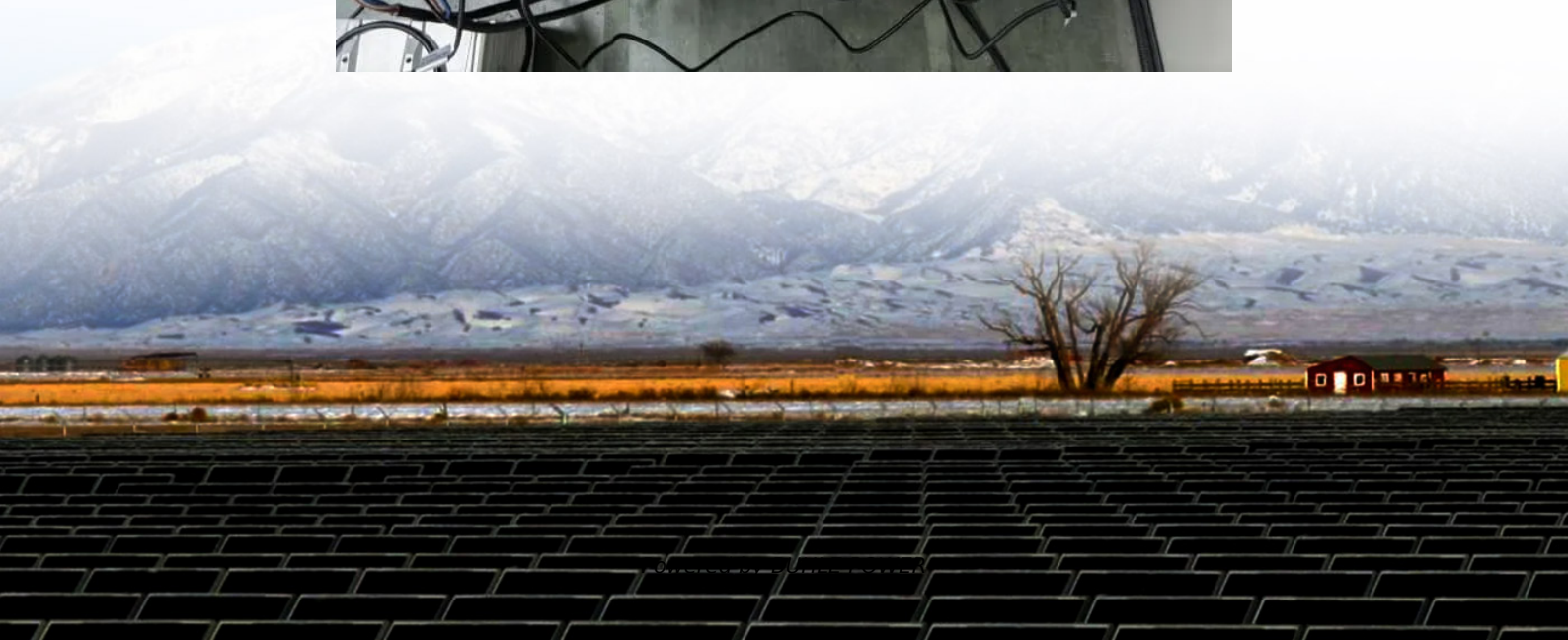


What size inverter should I use for a 72v battery





Overview

What size inverter for a 12V 200Ah battery?

For a 12V 200Ah battery (2.4kWh), a 2000W inverter is ideal. Formula: Inverter Wattage \leq (Battery Voltage \times Ah Rating \times 0.8). Factor in surge power needs but prioritize sustained loads. Always check the battery's max discharge rate (C-rate) to avoid exceeding safe limits. When sizing for 24V or 48V systems, recalculate using the higher voltage.

What is the recommended battery size for an inverter?

Interpreting Results: Once you input the required data, the calculator will generate the recommended battery size in ampere-hours (Ah). For instance, if your power consumption is 500 watts, the usage time is 4 hours, and the inverter efficiency is 90%, the calculator might suggest a battery size of approximately 222 Ah.

What wattage Inverter should I use?

Match the inverter's continuous wattage rating to the battery's discharge capacity. For a 12V 200Ah battery (2.4kWh), a 2000W inverter is ideal. Formula: Inverter Wattage \leq (Battery Voltage \times Ah Rating \times 0.8). Factor in surge power needs but prioritize sustained loads.

What voltage should a 12V inverter run on?

The input voltage of the inverter should match the battery voltage. (For example 12v battery for 12v inverter, 24v battery for 24v inverter and 48v battery for 48v inverter Summary What Will An Inverter Run & For How Long?



What size inverter should I use for a 72v battery

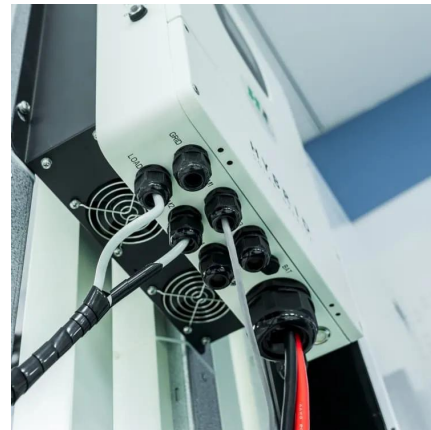


[Can an Inverter Be Too Big for Your Battery System?](#)

How to Calculate the Right Inverter Size for Your Battery Match the inverter's continuous wattage rating to the battery's discharge capacity. For a 12V 200Ah battery (2.4kWh), a 2000W inverter ...

[What Size Inverter Do I Need for a 72V 200Ah ...](#)

Oct 9, 2024 · To determine the size of the inverter needed for a 72v 200Ah lithium battery, consider the total wattage requirements of the devices you ...



[The Only Inverter Size Chart You'll Ever Need](#)

Sep 25, 2023 · We have created a comprehensive inverter size chart to help you select the correct inverter to power your appliances.

[What Size Inverter You Need \(Calculations + Battery\)](#)

Oct 6, 2022 · The size of the inverter required will be determined by the total wattage of the appliances you need to operate ...

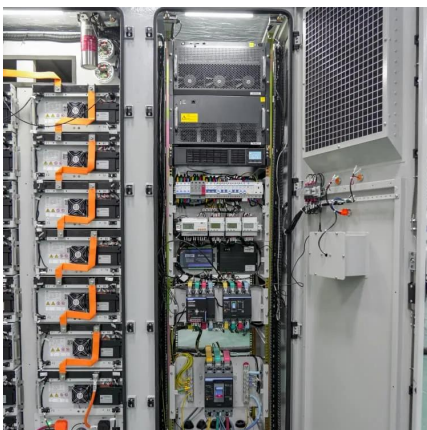


[Calculate Battery Size For Any Size Inverter \(Using Our ...](#)

Mar 3, 2023 · Pairing a right size capacity battery for an inverter can be a bit confusing for most the beginners So I have made it easy for you, use the calculator below to calculate the battery ...

[What Size Inverter Do I Need for a 72V 200Ah Lithium Battery?](#)

Oct 9, 2024 · To determine the size of the inverter needed for a 72v 200Ah lithium battery, consider the total wattage requirements of the devices you plan to run. Take into account the ...



[How Do I Match My Battery Size to My Inverter?](#)

How do I know what size battery I need for my inverter? A1: Calculate the total wattage of devices you'll run, then use a guideline of at least 100Ah per 1000 watts of inverter capacity.



[What Size Inverter You Need \(Calculations + Battery\)](#)

Oct 6, 2022 · The size of the inverter required will be determined by the total wattage of the appliances you need to operate and the time they need to run. You also need to add a bit ...



[What Size Inverter Do I Need? A Comprehensive Guide to Inverter ...](#)

Oct 29, 2025 · Additional Resources How to Size a Home Power Inverter - SRNE Solar Inverter Basics Explained - This comprehensive guide empowers you to select the right ...

[How to Choose the Right Inverter for Lithium Batteries?](#)

Apr 11, 2025 · Answer: To choose the right inverter for lithium batteries, match the inverter's voltage and capacity to your battery's specifications, prioritize pure sine wave inverters for ...



[Calculate Battery Size for Inverter Calculator](#)

Mar 14, 2025 · The Calculate Battery Size for Inverter Calculator helps you determine the optimal battery capacity needed to support your inverter system. By inputting critical parameters such ...



[Calculate Battery Size For Any Size Inverter \(Using Our ...](#)

Inverter Battery Size Calculator
How to Calculate Battery Capacity For Inverter
How Many Batteries For 3000-Watt Inverter
Battery Size Chart For Inverter
Battery to Inverter Wire Size Chart
To calculate the battery capacity for your inverter use this formula
$$\text{Inverter capacity (W)} \times \text{Runtime (hrs)} / \text{solar system voltage} = \text{Battery Size} \times 1.15$$

Multiply the result by 2 for lead-acid type battery, for lithium battery type it would stay the same
Example Let's suppose you have a 3000-watt inverter with an 85% efficiency rate and your daily runtime
See more on [dotwatts calculatorcorp](#)



Calculate Battery Size for Inverter Calculator

Mar 14, 2025 · The Calculate Battery Size for Inverter Calculator helps you determine the optimal battery capacity needed to support your inverter ...



[What size inverter should I use for a 72v battery](#)

How many batteries should a 24V inverter use? If an inverter operates at 24V, the battery bank should be designed accordingly. For instance, using two 12V batteries in series provides 24V, ...

Contact Us

For technical specifications, project proposals, or partnership inquiries, please visit:
<https://bukhobuhle.co.za>



Scan QR Code for More Information



<https://bukhobuhle.co.za>