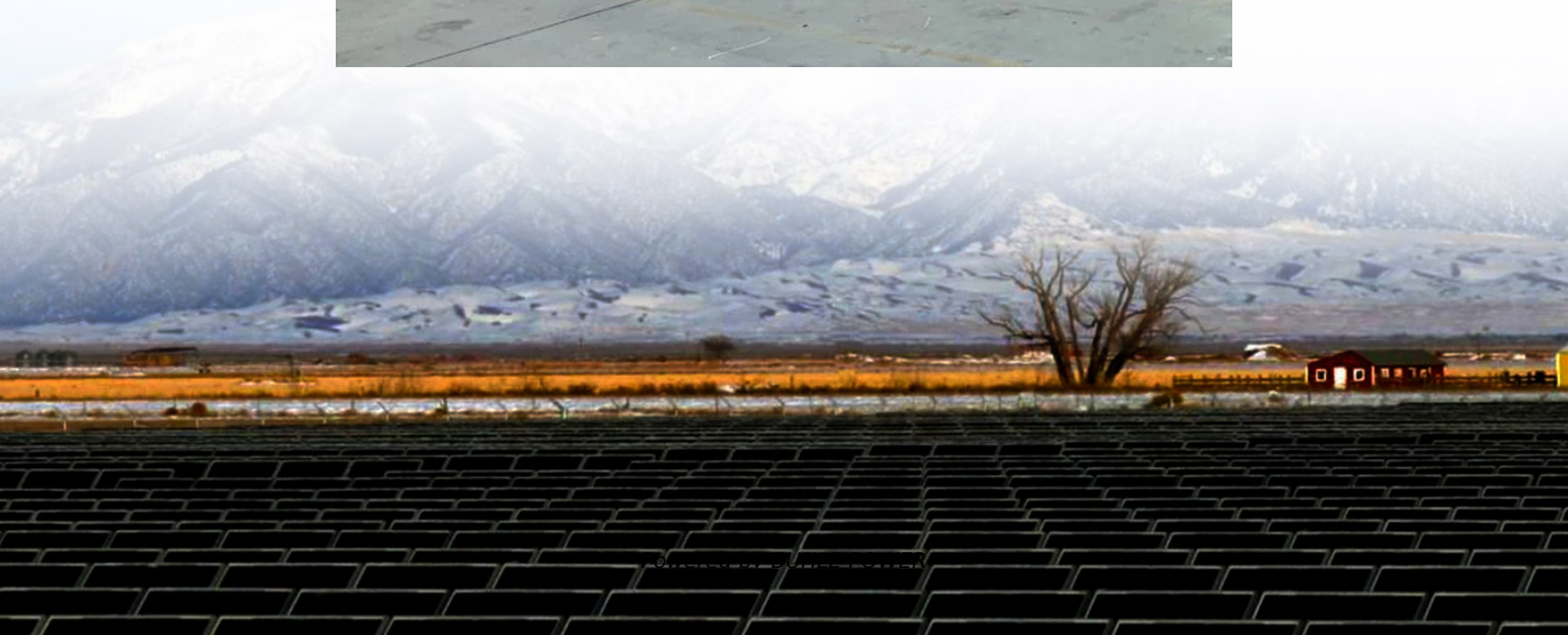


What systems does an energy storage power station have





Overview

What are battery storage power stations?

Battery storage power stations are usually composed of batteries, power conversion systems (inverters), control systems and monitoring equipment. There are a variety of battery types used, including lithium-ion, lead-acid, flow cell batteries, and others, depending on factors such as energy density, cycle life, and cost.

What are the core functions of energy storage power stations?

In addition to these core functions, functions such as anti-backflow protection, support for parallel/off-grid operation, and islanding protection further enhance the reliability and versatility of energy storage power stations.

What are energy storage systems?

Energy storage systems are devices capable of carrying out these transformations in an efficient and controlled way, allowing to better manage energy supply and demand nationwide. What is an energy storage system?

An energy storage system is a device or set of devices that can store electrical energy and supply it when needed.

How does an energy storage system work?

An energy storage system consists of three main components: a control system, which manages the energy flow between the converter and the storage unit.



What systems does an energy storage power station have



[What systems does an energy storage power station have?](#)

Oct 5, 2024 · An energy storage power station comprises several integral systems that work together to optimize the management and delivery of energy. 1. Energy Management Sy...

[What equipment does the energy storage power station have?](#)

Jul 4, 2024 · The integration of energy storage power stations with the grid is accomplished through complex power conversion systems and management protocols. Inverters within these ...

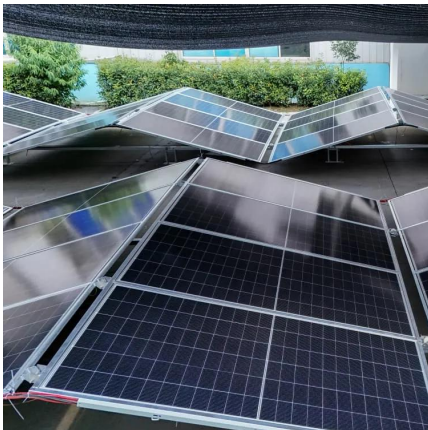


[How Does an Energy Storage Power Station Work? The ...](#)

From Sunshine to Socket: The Magic of Energy Storage Imagine a giant "power bank" for cities--this is essentially what an energy storage power station does. Unlike your smartphone ...

[What Is an Energy Storage System \(ESS\) ...](#)

An Energy Storage System is an intelligent power backup system that uses lithium-ion batteries to store electricity and provides it during blackouts or ...



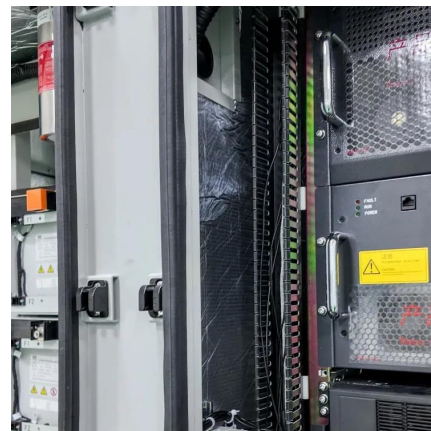
[Battery storage power station - a comprehensive guide](#)

14 hours ago · Battery storage power stations store electrical energy in various types of batteries such as lithium-ion, lead-acid, and flow cell batteries. These facilities require efficient operation ...



[Energy storage systems: what are they and ...](#)

1 day ago · An energy storage system is a device or set of devices that can store electrical energy and supply it when needed. It is a fundamental ...



[The Ultimate Guide to Battery Energy Storage Systems ...](#)

Apr 6, 2024 · Battery Energy Storage Systems (BESS) have become a cornerstone technology in the pursuit of sustainable and efficient energy solutions. This detailed guide offers an ...



[The Best of the BESS: The Role of Battery Energy Storage Systems ...](#)

Oct 24, 2025 · In an era of rapid technological advancement and increasing reliance on renewable energy, battery energy storage systems (BESS) are emerging as pivotal players in ...

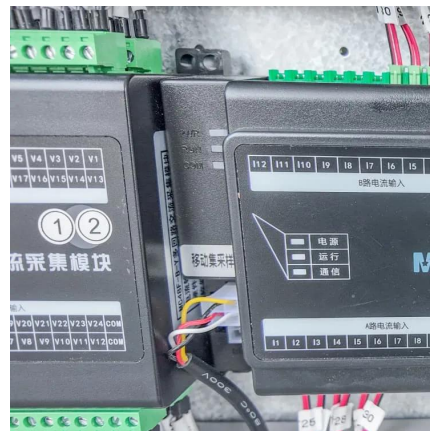


[Energy storage systems: what are they and how they work](#)

1 day ago · An energy storage system is a device or set of devices that can store electrical energy and supply it when needed. It is a fundamental technology for ensuring the safety, reliability ...

[The Ultimate Guide to Battery Energy Storage ...](#)

Apr 6, 2024 · Battery Energy Storage Systems (BESS) have become a cornerstone technology in the pursuit of sustainable and efficient energy ...



[Stationary Energy Storage . Battery Council International](#)

Dec 4, 2025 · Stationary energy storage is critical to supporting a strong energy future - delivering the reliability, resilience, and sustainability our nation depends on. To meet diverse ...



What equipment does the energy storage ...

Jul 4, 2024 · The integration of energy storage power stations with the grid is accomplished through complex power conversion systems and ...

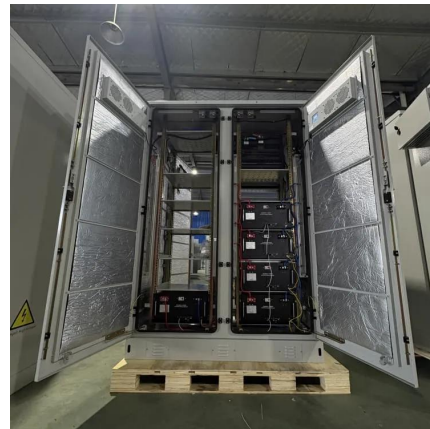


What Is an Energy Storage System (ESS) Power Cube?

An Energy Storage System is an intelligent power backup system that uses lithium-ion batteries to store electricity and provides it during blackouts or periods of high demand.

HOW DO ENERGY STORAGE STATIONS WORK

What are battery storage power stations? Battery storage power stations are usually composed of batteries, power conversion systems (inverters), control systems and monitoring equipment. ...



Contact Us

For technical specifications, project proposals, or partnership inquiries, please visit:
<https://bukhobuhle.co.za>



Scan QR Code for More Information



<https://bukhobuhle.co.za>