

# Which is bigger for base station batteries or outdoor batteries





## Overview

---

Are portable power stations good for off-grid camping?

We explore how portable power stations compare, and share real-world insights from off-grid 4WD camping. For years, a dual battery setup has been the gold standard for 4WDers heading off-grid. It's reliable, hardwired, and works seamlessly while you're on the move.

Should you use a portable power station or a solar panel?

Throw in a solar panel or vehicle charger, and you can stretch that capability out indefinitely if you play it right. If you're running heavy-duty gear (think induction cookers, AC units, or power tools), a permanent dual battery system might still be the better bet with a portable power station instead used for backup.

What is a portable power station?

What's a portable power station, then?

Portable power stations are self-contained battery boxes that include all the sockets and outputs you need – 240V AC, 12V DC, USBs, and solar input. They come with a built-in inverter and smart display, and can be recharged via mains power, solar panels, and usually, your vehicle.

Is a portable power station a good option for a 4WD?

For years, a dual battery setup has been the gold standard for 4WDers heading off-grid. It's reliable, hardwired, and works seamlessly while you're on the move. However, in recent years, portable power stations have emerged as a viable alternative. No difficult installs. Just plug in and go.



## Which is bigger for base station batteries or outdoor batteries

---



### [How Big Is the Outdoor Energy Storage Battery? A Complete ...](#)

Jun 5, 2024 · Let's face it - when shopping for an outdoor energy storage battery, size does matter. But here's the kicker: bigger isn't always better. The outdoor energy storage battery ...

### [How much energy storage battery is used in base stations?](#)

Aug 25, 2024 · These batteries enable base stations to operate efficiently, particularly when coupled with solar or wind energy systems. As the demand for connectivity rises, the efficiency ...



### [Which Battery Is Best for Outdoor Power Stations?](#)

When selecting a battery for outdoor power stations, it's essential to understand that the battery is the core factor that determines the unit's performance. Whether for camping, hiking, or ...

### [How to Choose Portable Power Station Batteries of Different ...](#)

Mar 22, 2025 · Portable power stations (PPS) have revolutionized energy accessibility for outdoor enthusiasts, homeowners, and emergency preparedness. With capacities ranging from 300Wh ...





### [Guide to Choosing the Right Batteries for Outdoor Activities](#)

Jun 11, 2024 · Batteries are indispensable power sources for numerous outdoor devices, from headlamps and lanterns to GPS devices and cameras. Selecting the right battery involves ...



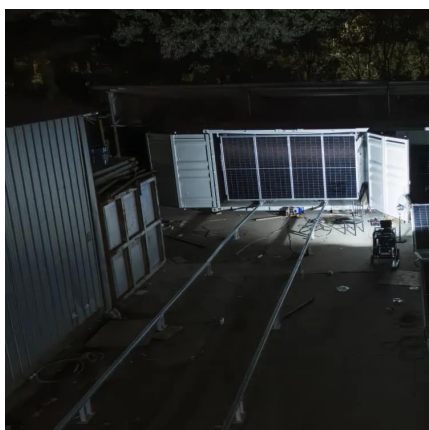
### [Ultimate Guide to Base Station Power Selection: Lithium vs.](#)

Nov 17, 2025 · 1 re Technical Characteristics: The Fundamental Differences Lithium Batteries (Mainstream: LiFePO4) LiFePO4 is the preferred lithium battery chemistry for telecom base ...



### [Portable Power Station vs Dual Battery: Which ...](#)

Jul 24, 2025 · Can you tour without a dual battery setup? We explore how portable power stations compare, and share real-world insights from off ...





## [What Size Battery for Base Station? , Huijue Group E-Site](#)

Why Battery Sizing Isn't Just About Numbers The 2023 Ericsson Mobility Report shows base stations now handle 450% more data traffic than in 2018. Traditional VRLA batteries designed ...



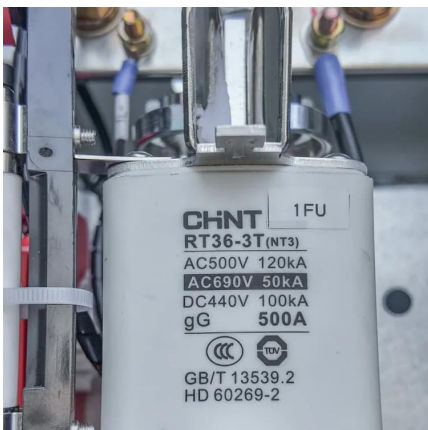
## [Portable Power Station vs Dual Battery: Which is best for ...](#)

Jul 24, 2025 · Can you tour without a dual battery setup? We explore how portable power stations compare, and share real-world insights from off-grid 4WD camping.



## [Best Outdoor Battery Recommendations for Off-Grid Power](#)

Jul 8, 2025 · This power station is a prime example of durable outdoor batteries, built to withstand the rigors of travel and challenging environments. Its robust construction ensures it can handle ...



## [How to Select the Best ESTEL Battery Backup for Base Stations](#)

May 29, 2025 · For instance, statistical comparisons of telecom battery backup systems reveal that lithium-ion batteries with capacities ranging from 10,000mAh to over 60,000mAh are ideal ...



## Contact Us

---

For technical specifications, project proposals, or partnership inquiries, please visit:  
<https://bukhobuhle.co.za>

### Scan QR Code for More Information



<https://bukhobuhle.co.za>